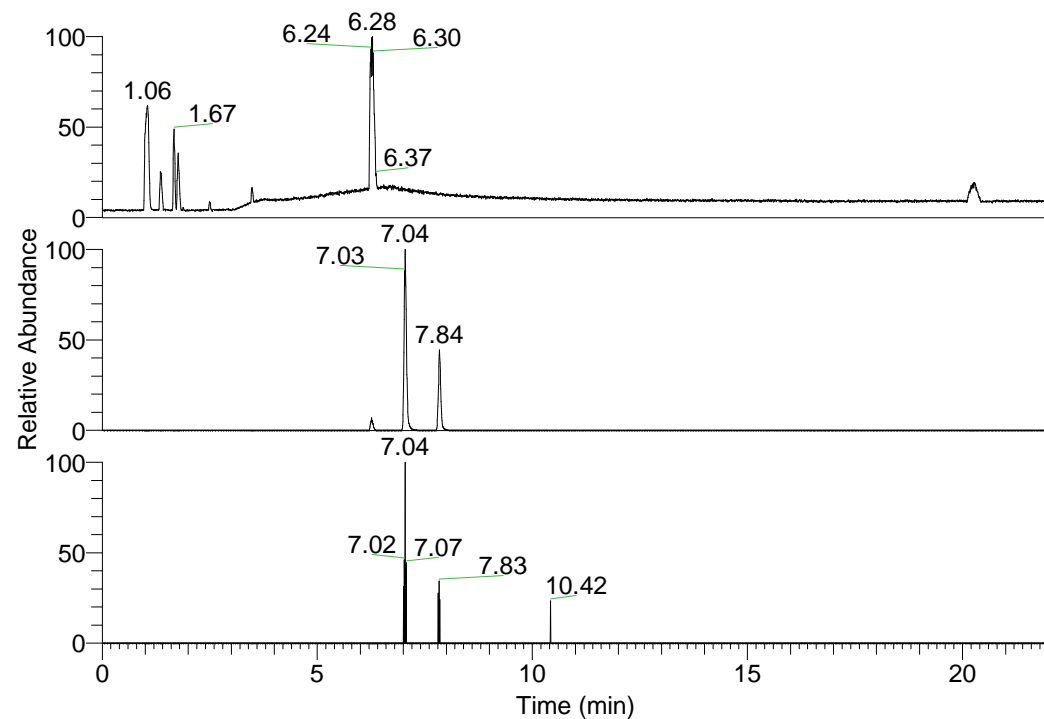


RT: 0.00 - 22.01



NL: 1.84E8  
 Base Peak m/z=  
 100.00000-1500.00000 F:  
 FTMS + p ESI Full ms  
 [100.00-1500.00] MS  
 Arobustus\_HDX

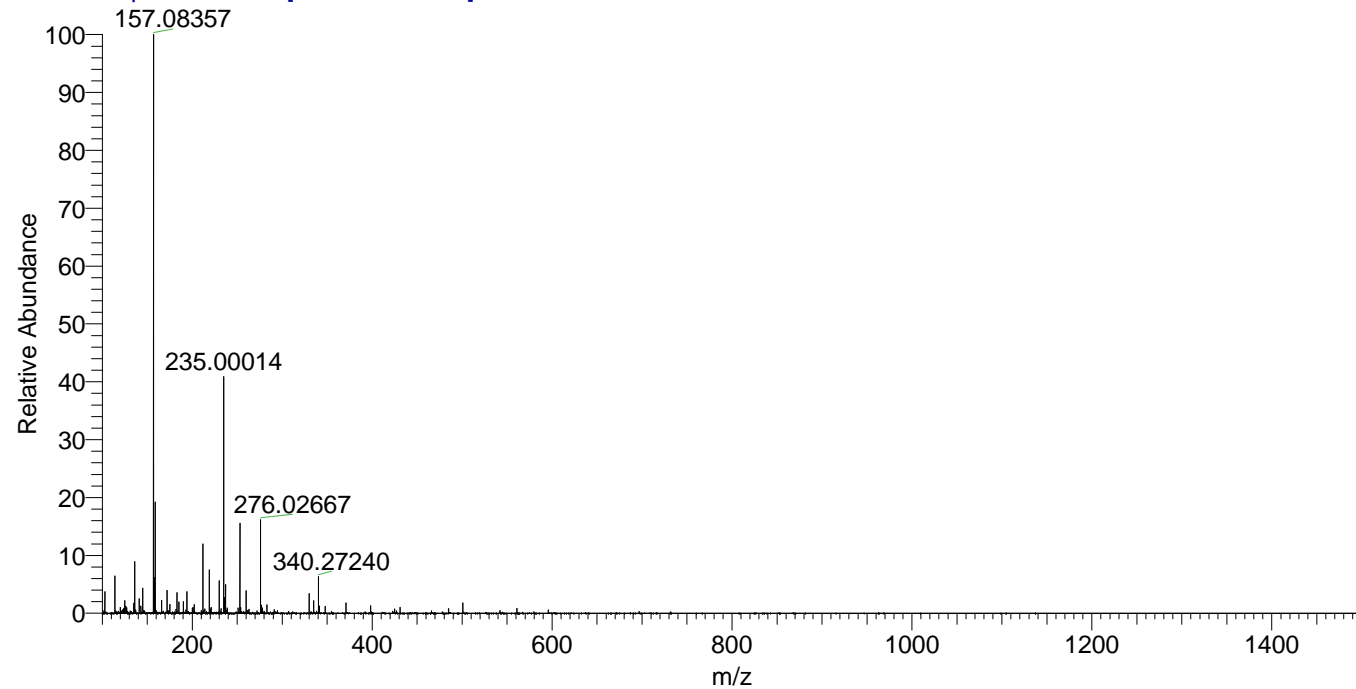
NL: 3.52E6  
 Base Peak m/z=  
 340.27129-340.27469 F:  
 FTMS + p ESI Full ms  
 [100.00-1500.00] MS  
 Arobustus\_HDX

NL: 1.44E4  
 Base Peak m/z=  
 171.14269-171.14441 F:  
 FTMS + p ESI Full ms  
 [100.00-1500.00] MS  
 Arobustus\_HDX

Arobustus\_HDX#1244 RT: 7.84  
 T: FTMS + p ESI Full ms [100.00-1500.00]  
 m/z= 340.00000-341.00000

m/z	Intensity	Relative	Delta (ppm)	Composition
340.27240	1567547.0	100.00	-0.12	C <sub>18</sub> H <sub>22</sub> <sup>2</sup> H <sub>7</sub> O <sub>2</sub> N <sub>4</sub>
			4.43	C <sub>18</sub> H <sub>20</sub> <sup>2</sup> H <sub>8</sub> O <sub>2</sub> N <sub>4</sub>
			-4.67	C <sub>18</sub> H <sub>24</sub> <sup>2</sup> H <sub>6</sub> O <sub>2</sub> N <sub>4</sub>

Arobustus\_HDX #1244 RT: 7.84 AV: 1 NL: 2.39E7  
 T: FTMS + p ESI Full ms [100.00-1500.00]



Arobustus\_HDX #1244 RT: 7.84 AV: 1 NL: 1.52E6  
 T: FTMS + p ESI Full ms [100.00-1500.00]

