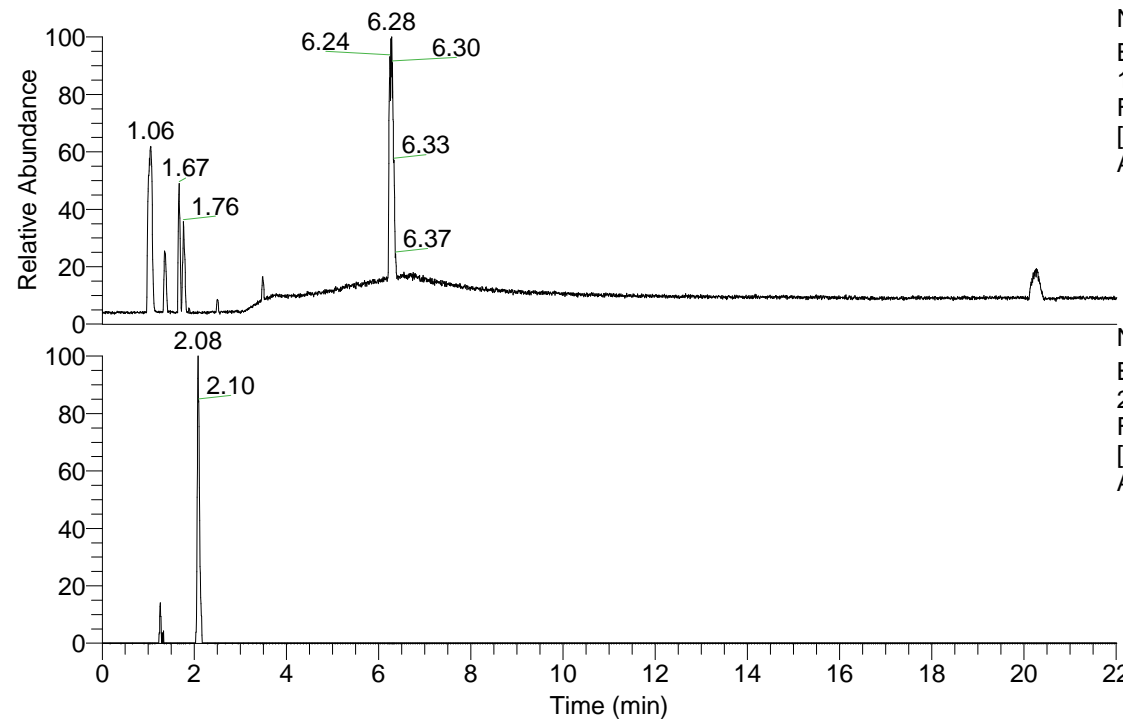


RT: 0.00 - 22.01



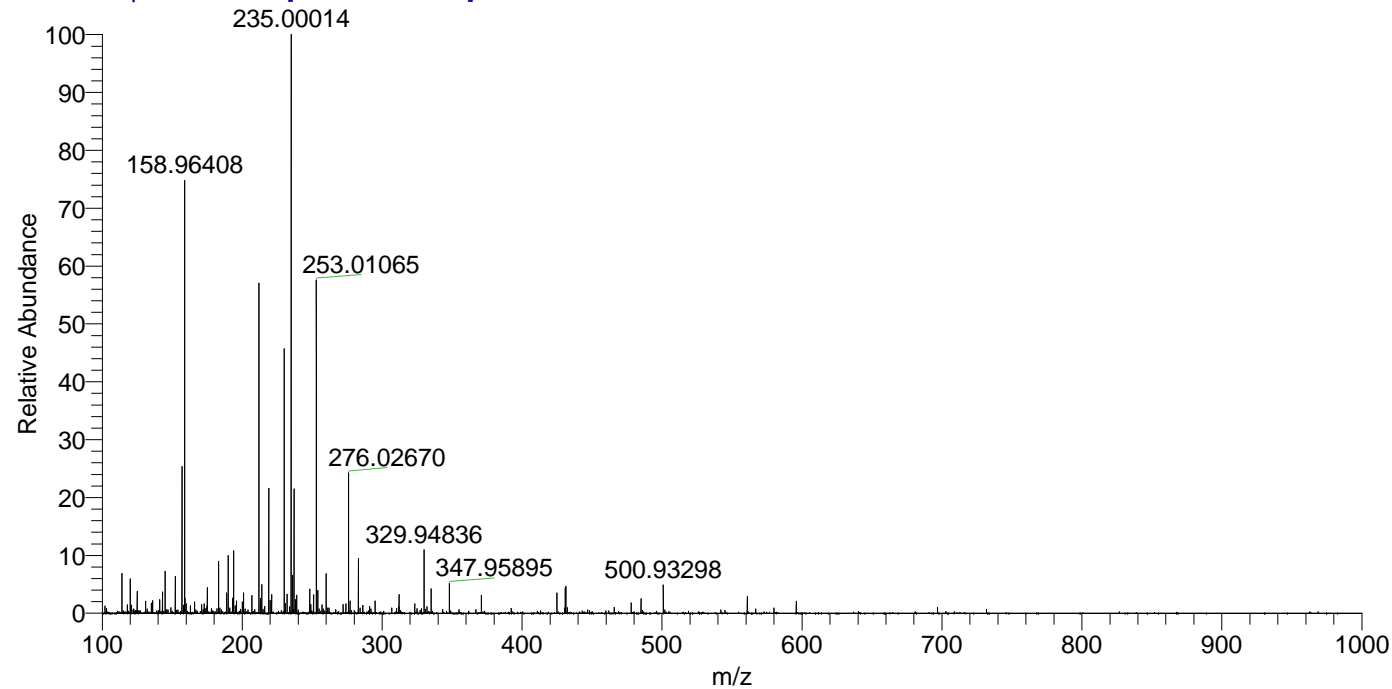
NL: 1.84E8
 Base Peak m/z= 100.00000-1500.00000
 F: FTMS + p ESI Full ms [100.00-1500.00] MS
 Arobustus_HDX

NL: 8.40E4
 Base Peak m/z= 291.14197-291.14489 F:
 FTMS + p ESI Full ms [100.00-1500.00] MS
 Arobustus_HDX

Arobustus_HDX#320 RT: 2.08
 T: FTMS + p ESI Full ms [100.00-1500.00]
 m/z= 291.00000-292.00000

m/z	Intensity	Relative	Delta (ppm)	Composition
291.14276	83968.1	100.00	-0.42	C ₁₀ H ₇ ² H ₇ O ₅ N ₅
			4.90	C ₁₀ H ₅ ² H ₈ O ₅ N ₅

Arobustus_HDX #320 RT: 2.08 AV: 1 NL: 7.09E6
 T: FTMS + p ESI Full ms [100.00-1500.00]



Arobustus_HDX #320 RT: 2.08 AV: 1 NL: 1.49E5
 T: FTMS + p ESI Full ms [100.00-1500.00]

