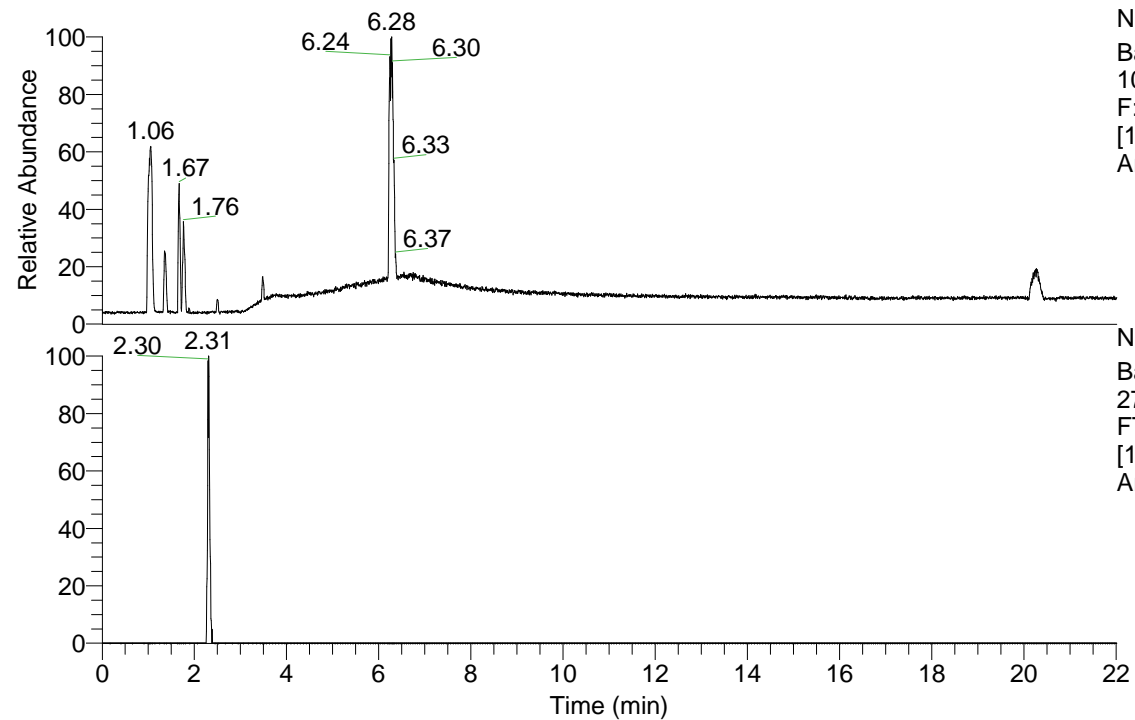


RT: 0.00 - 22.01



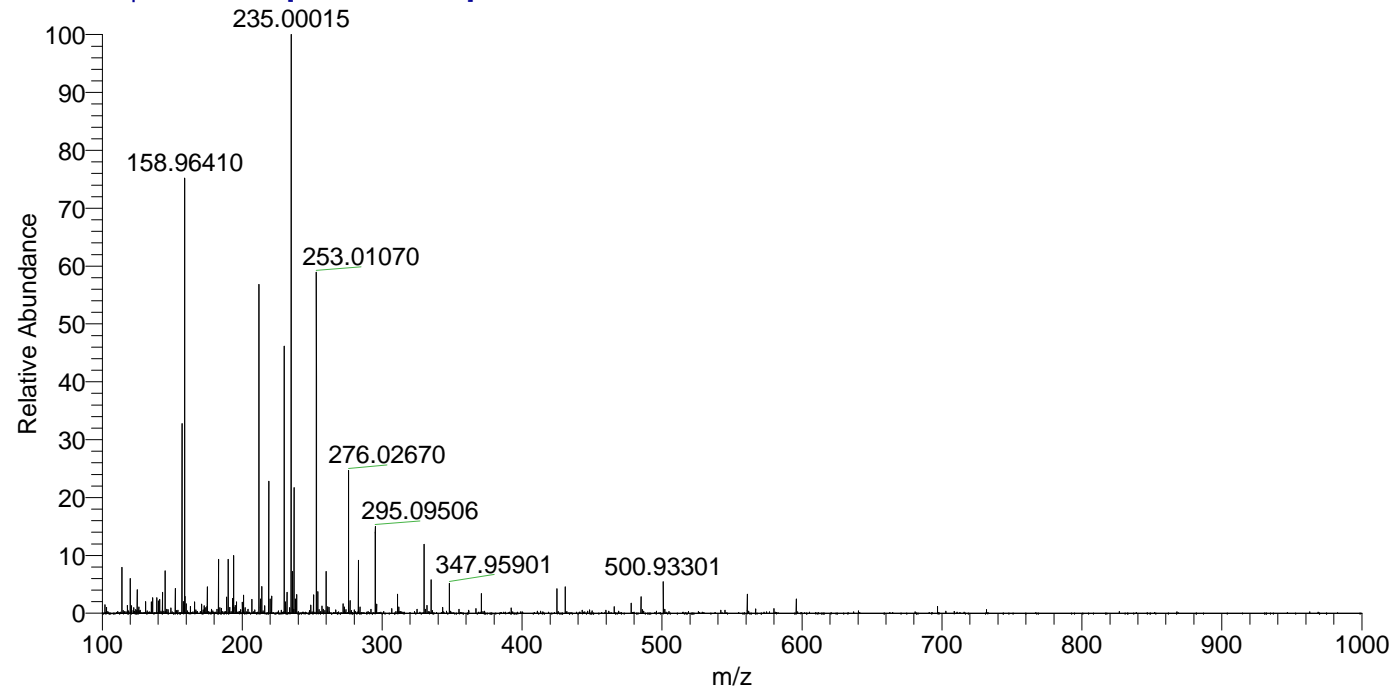
NL: 1.84E8
 Base Peak m/z= 100.00000-1500.00000
 F: FTMS + p ESI Full ms [100.00-1500.00] MS
 Arobustus_HDX

NL: 4.71E4
 Base Peak m/z= 274.11861-274.12135 F:
 FTMS + p ESI Full ms [100.00-1500.00] MS
 Arobustus_HDX

Arobustus_HDX#354 RT: 2.31
 T: FTMS + p ESI Full ms [100.00-1500.00]
 m/z= 274.00000-275.00000

m/z	Intensity	Relative	Delta (ppm)	Composition
274.11957	47108.1	100.00	0.50	C ₁₀ H ₈ ² H ₅ O ₅ N ₄

Arobustus_HDX #354 RT: 2.31 AV: 1 NL: 7.41E6
 T: FTMS + p ESI Full ms [100.00-1500.00]



Arobustus_HDX #354 RT: 2.31 AV: 1 NL: 1.83E6
 T: FTMS + p ESI Full ms [100.00-1500.00]

