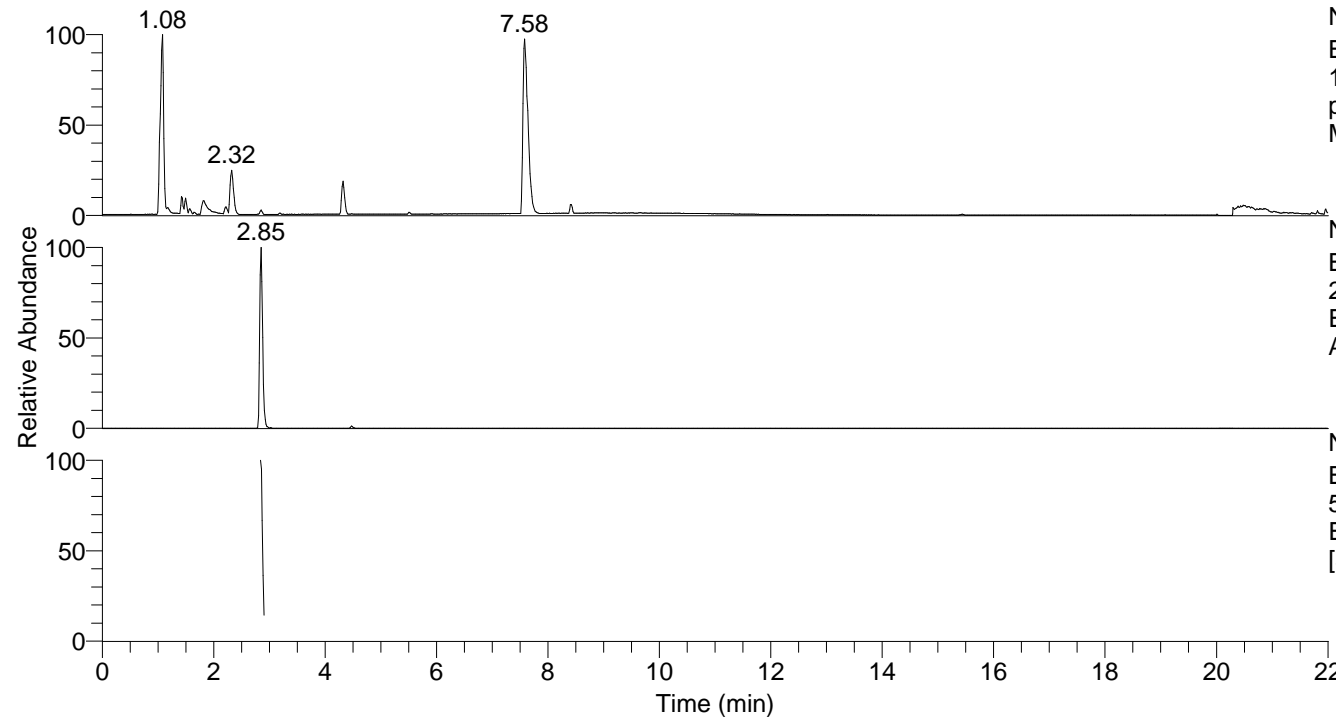


RT: 0.00 - 22.01



NL: 8.28E7
 Base Peak m/z=
 100.00000-1500.00000 F: FTMS +
 p ESI Full ms [100.00-1500.00]
 MS Arobustus

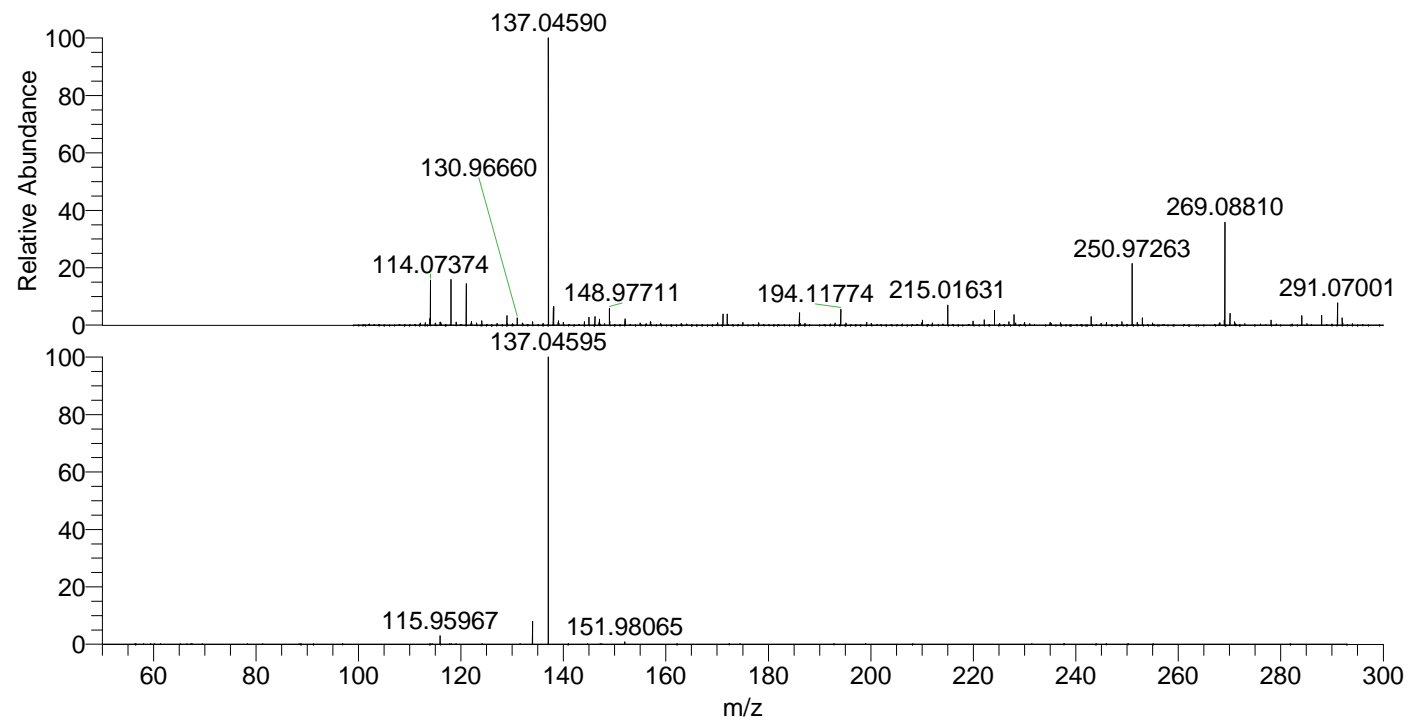
Arobustus#1138-1164 RT: 2.84-2.91 AV:

F: FTMS + p ESI d Full ms2 269.09 ...
 m/z= 50.00000-1000.00000

m/z	Intensity	Relative
115.95967	12299.6	2.92
133.97017	32553.8	7.72
137.04595	421874.0	100.00
151.98065	3385.6	0.80

NL: 9.12E5
 Base Peak m/z=
 269.08724-269.08994 F: FTMS + p
 ESI Full ms [100.00-1500.00] MS
 Arobustus

NL: 7.10E5
 Base Peak m/z=
 50.00000-1500.00000 F: FTMS + p
 ESI d Full ms2 269.09@hcd35.00
 [50.00-290.00] MS Arobustus



NL: 2.43E6
 Arobustus#1141 RT: 2.85
 AV: 1 T: FTMS + p ESI
 Full ms [100.00-1500.00]

NL: 4.10E5
 Arobustus#1098-1202
 RT: 2.84-2.91 AV: 5 F:
 FTMS + p ESI d Full ms2
 269.09@hcd35.00
 [50.00-290.00]