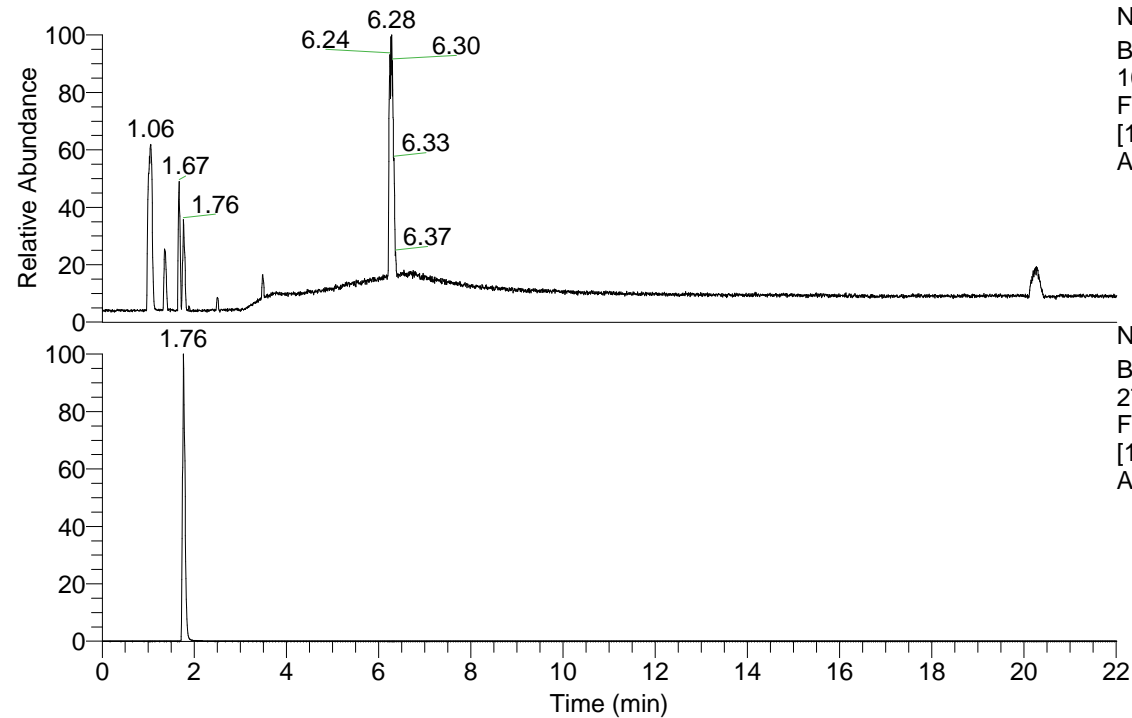


RT: 0.00 - 22.01



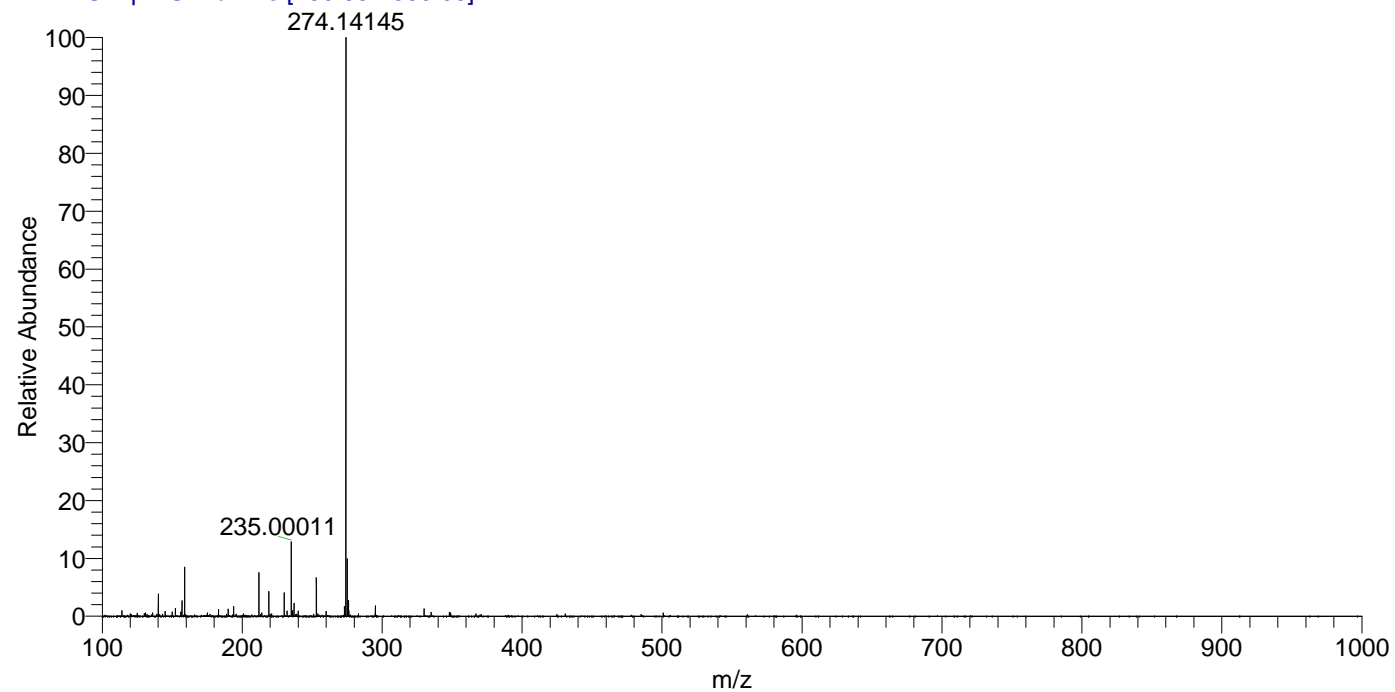
NL: 1.84E8
 Base Peak m/z=
 100.00000-1500.00000
 F: FTMS + p ESI Full ms
 [100.00-1500.00] MS
 Arobustus_HDX

Arobustus_HDX#270 RT: 1.76
 T: FTMS + p ESI Full ms [100.00-1500.00]
 m/z= 274.00000-275.00000

m/z	Intensity	Relative	Delta (ppm)	Composition
274.14145	60486928.0	100.00	-0.88	C ₁₀ H ₈ ² H ₆ O ₄ N ₅
			4.77	C ₁₀ H ₆ ² H ₇ O ₄ N ₅

NL: 6.55E7
 Base Peak m/z=
 274.14087-274.14361 F:
 FTMS + p ESI Full ms
 [100.00-1500.00] MS
 Arobustus_HDX

Arobustus_HDX #270 RT: 1.76 AV: 1 NL: 6.05E7
 T: FTMS + p ESI Full ms [100.00-1500.00]



Arobustus_HDX #270 RT: 1.76 AV: 1 NL: 6.05E7
 T: FTMS + p ESI Full ms [100.00-1500.00]

