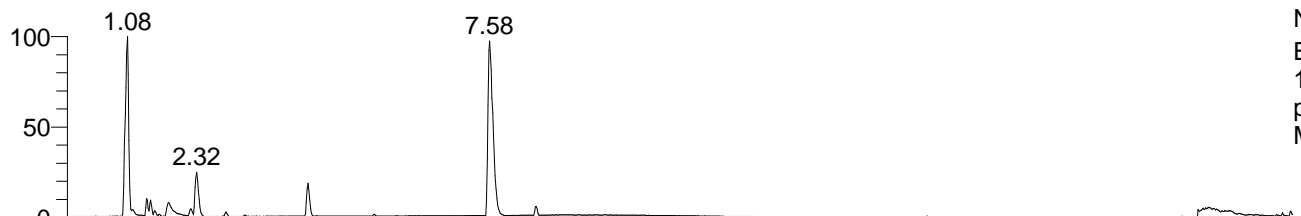


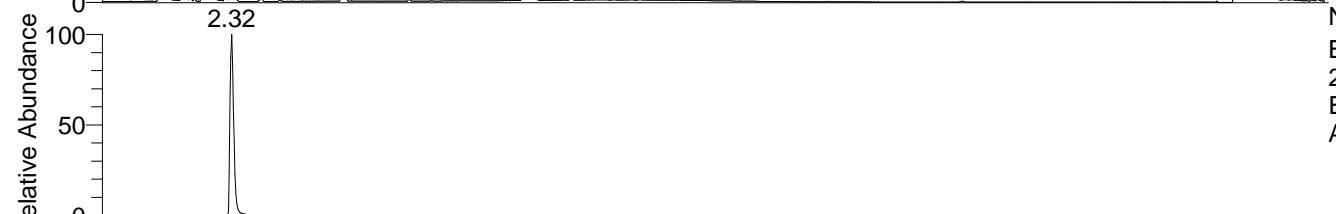
RT: 0.00 - 22.01



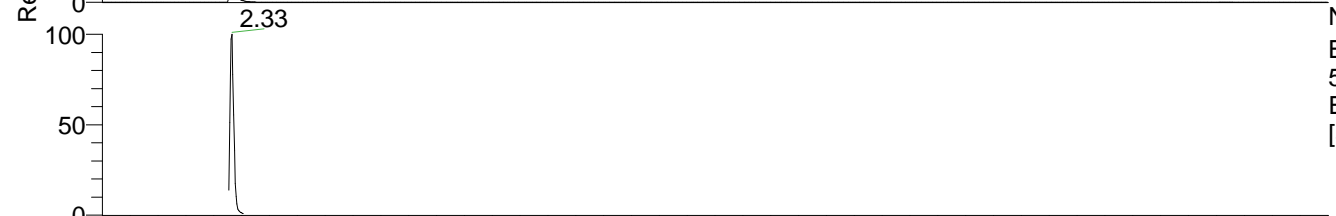
NL: 8.28E7  
 Base Peak m/z=  
 100.00000-1500.00000 F: FTMS +  
 p ESI Full ms [100.00-1500.00]  
 MS Arobustus

Arobustus#911-1002 RT: 2.27-2.50 AV: 16  
 F: FTMS + p ESI d Full ms2 268.10@h ...  
 m/z= 50.00000-1000.00000

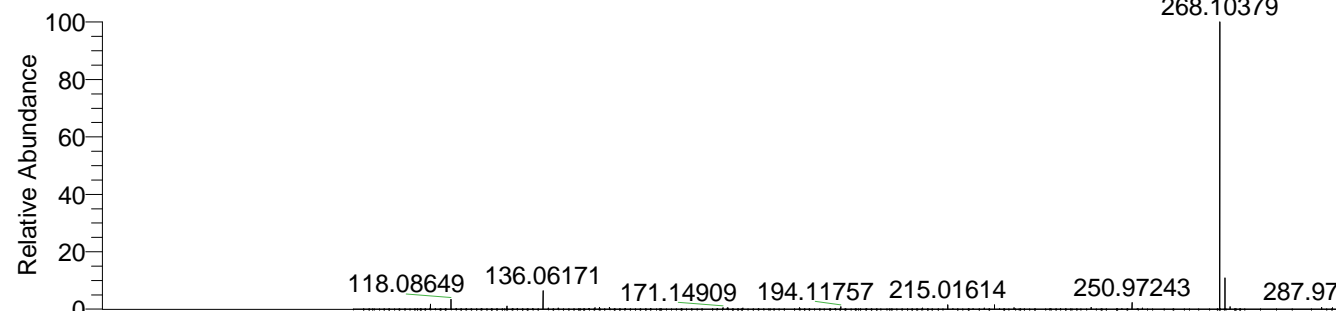
m/z	Intensity	Relative
57.03432	20881.4	0.50
85.02900	22893.8	0.55
115.03932	22422.5	0.54
136.06181	4151257.5	100.00
268.10396	89177.8	2.15



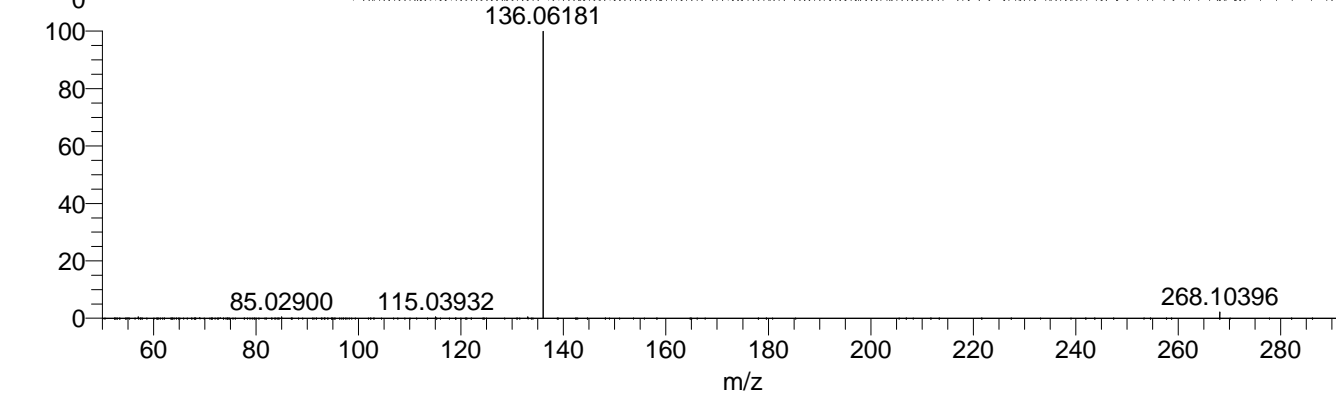
NL: 2.07E7  
 Base Peak m/z=  
 268.10323-268.10591 F: FTMS + p  
 ESI Full ms [100.00-1500.00] MS  
 Arobustus



NL: 1.28E7  
 Base Peak m/z=  
 50.00000-1500.00000 F: FTMS + p  
 ESI d Full ms2 268.10@hcd35.00  
 [50.00-290.00] MS Arobustus



NL: 2.06E7  
 Arobustus#931 RT: 2.32  
 AV: 1 T: FTMS + p ESI  
 Full ms [100.00-1500.00]



NL: 4.15E6  
 Arobustus#877-1002 RT:  
 2.27-2.50 AV: 16 F:  
 FTMS + p ESI d Full ms2  
 268.10@hcd35.00  
 [50.00-290.00]