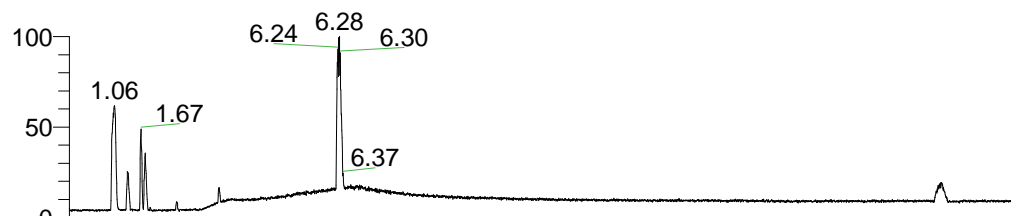


RT: 0.00 - 22.01



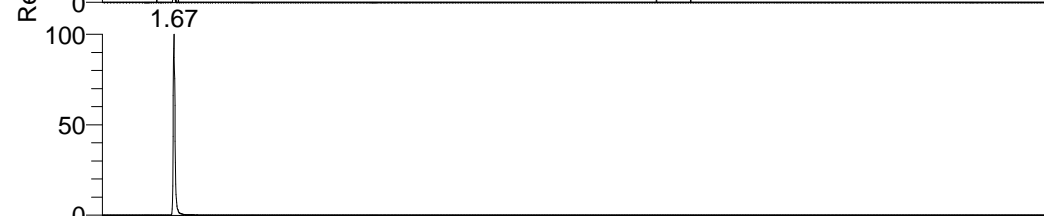
NL: 1.84E8
 Base Peak m/z=
 100.00000-1500.00000 F:
 FTMS + p ESI Full ms
 [100.00-1500.00] MS
 Arobustus_HDX

Arobustus_HDX#255 RT: 1.67
 T: FTMS + p ESI Full ms [100.00-1500.00]
 m/z= 219.00000-220.00000

m/z	Intensity	Relative	Delta (ppm)	Composition
219.04120	89888312.0	100.00	-0.60	C ₆ H ₄ ² H ₄ O ₇ Na



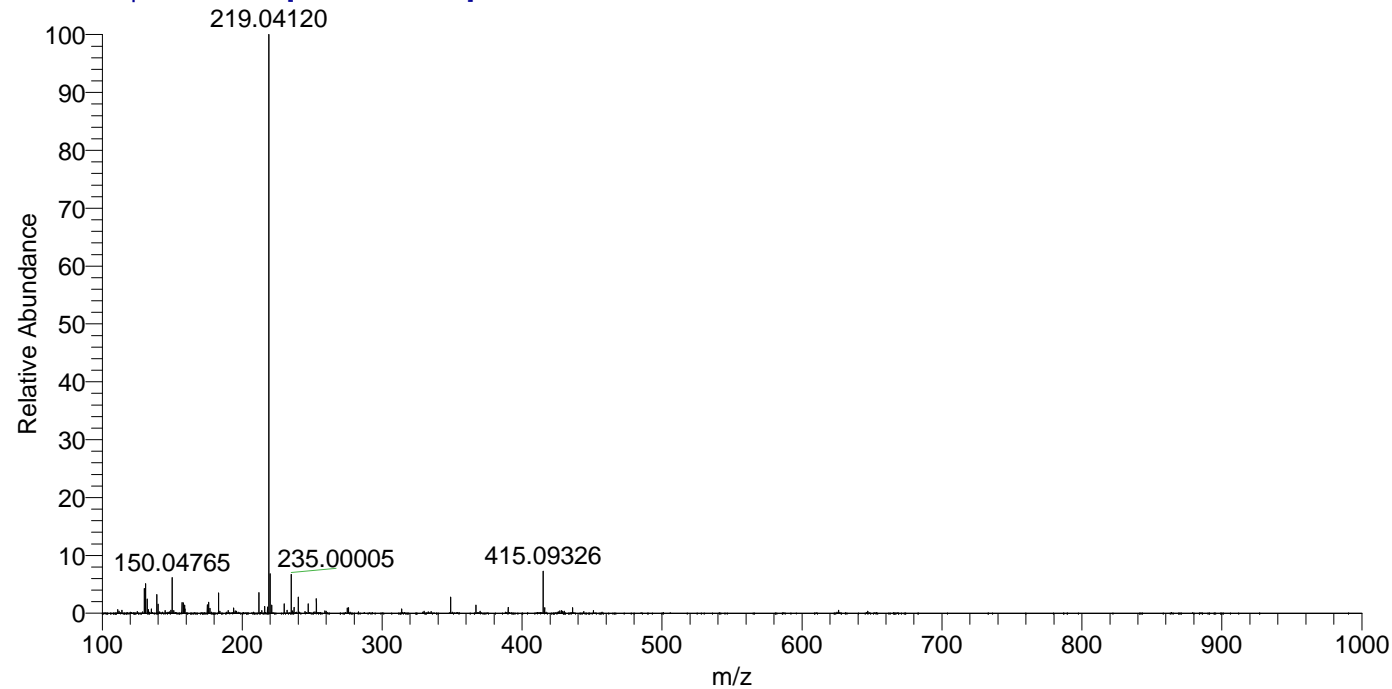
NL: 6.59E4
 Base Peak m/z=
 198.06522-198.06720 F:
 FTMS + p ESI Full ms
 [100.00-1500.00] MS
 Arobustus_HDX



NL: 8.99E7
 Base Peak m/z=
 219.04078-219.04298 F:
 FTMS + p ESI Full ms
 [100.00-1500.00] MS
 Arobustus_HDX

Arobustus_HDX #255 RT: 1.67 AV: 1 NL: 8.76E7

T: FTMS + p ESI Full ms [100.00-1500.00]



Arobustus_HDX #255 RT: 1.67 AV: 1 NL: 8.76E7

T: FTMS + p ESI Full ms [100.00-1500.00]

