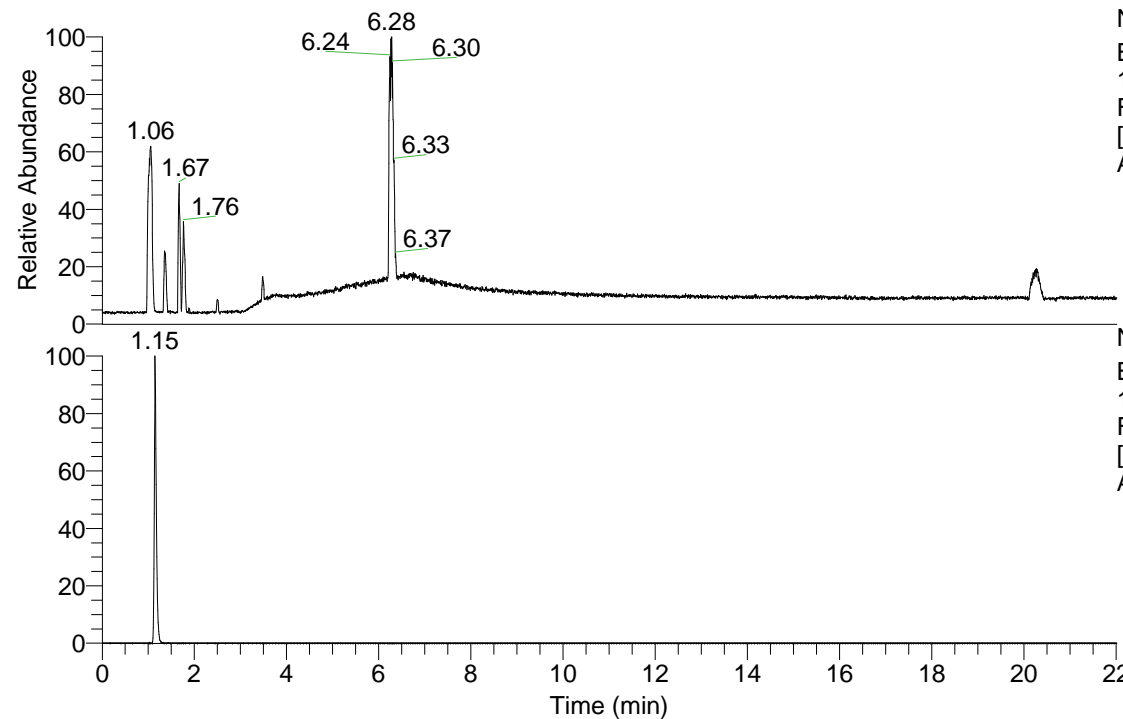


RT: 0.00 - 22.01



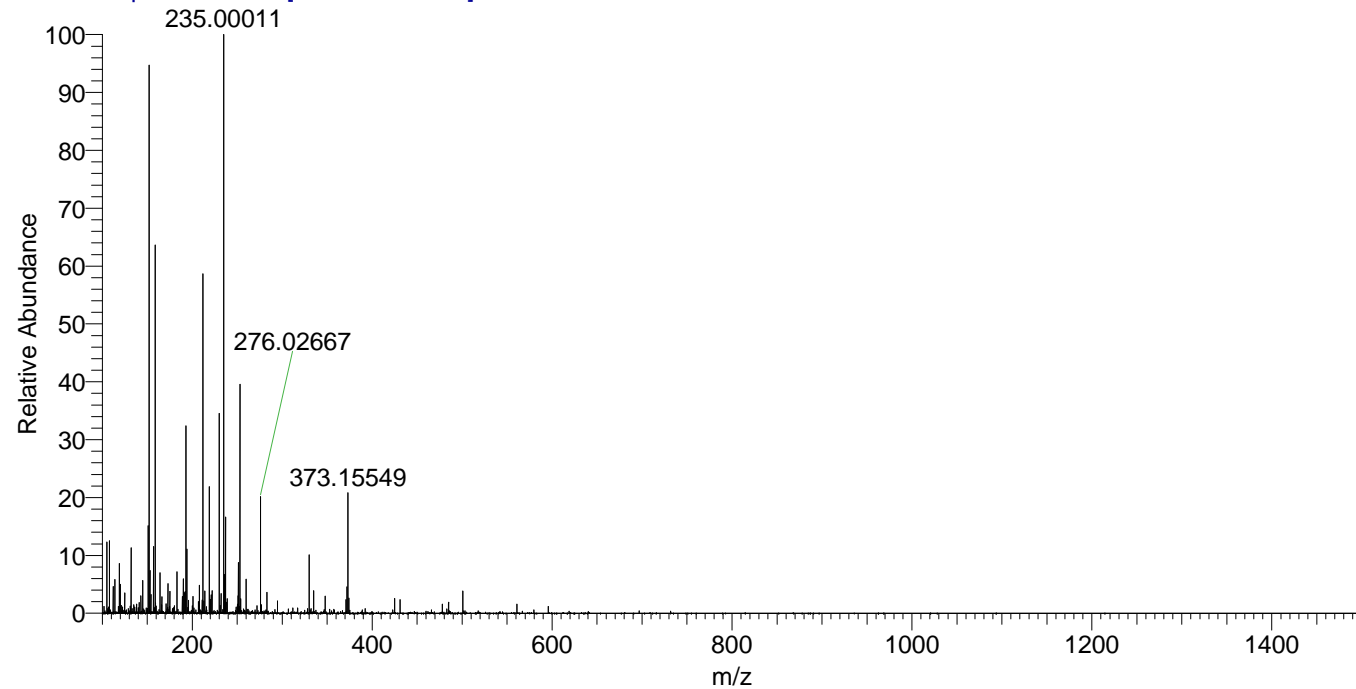
NL: 1.84E8
 Base Peak m/z=
 100.00000-1500.00000
 F: FTMS + p ESI Full ms
 [100.00-1500.00] MS
 Arobustus_HDX

NL: 2.79E6
 Base Peak m/z=
 193.20670-193.20864 F:
 FTMS + p ESI Full ms
 [100.00-1500.00] MS
 Arobustus_HDX

Arobustus_HDX#175 RT: 1.15
 T: FTMS + p ESI Full ms [100.00-1500.00]
 m/z= 193.00000-194.00000

m/z	Intensity	Relative	Delta (ppm)	Composition
193.20723	2612989.5	100.00	0.55	C ₉ H ₁₇ ² H ₅ O _N ₃

Arobustus_HDX #175 RT: 1.15 AV: 1 NL: 7.78E6
 T: FTMS + p ESI Full ms [100.00-1500.00]



Arobustus_HDX #175 RT: 1.15 AV: 1 NL: 2.52E6
 T: FTMS + p ESI Full ms [100.00-1500.00]

