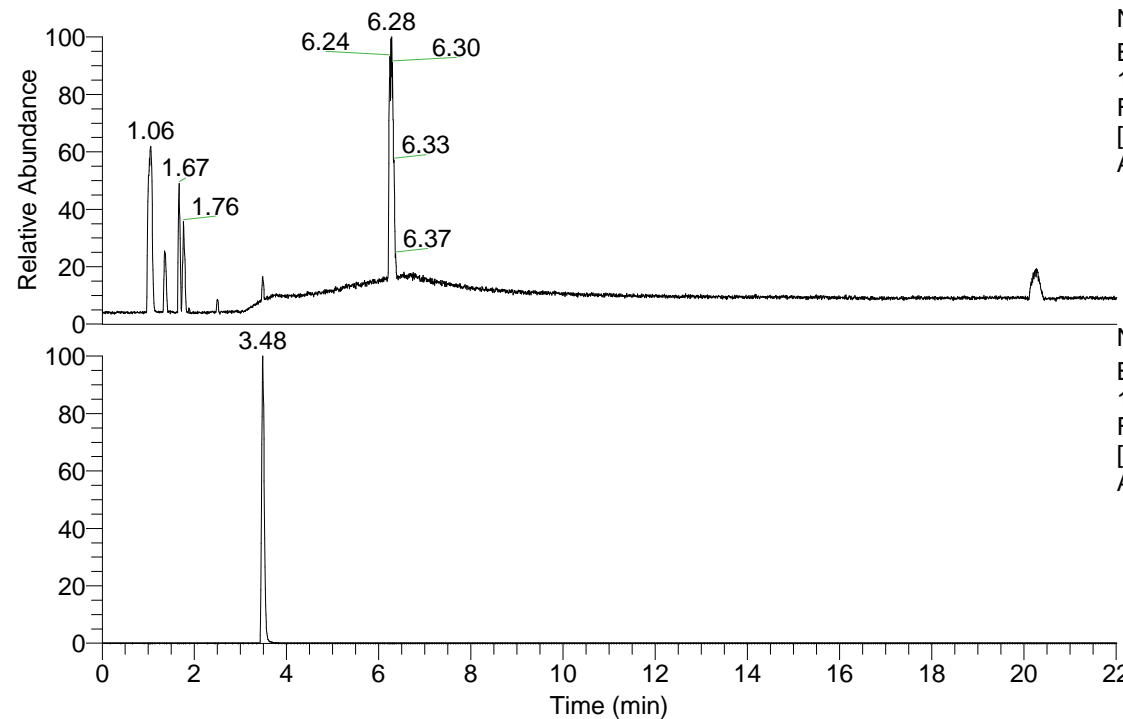


RT: 0.00 - 22.01



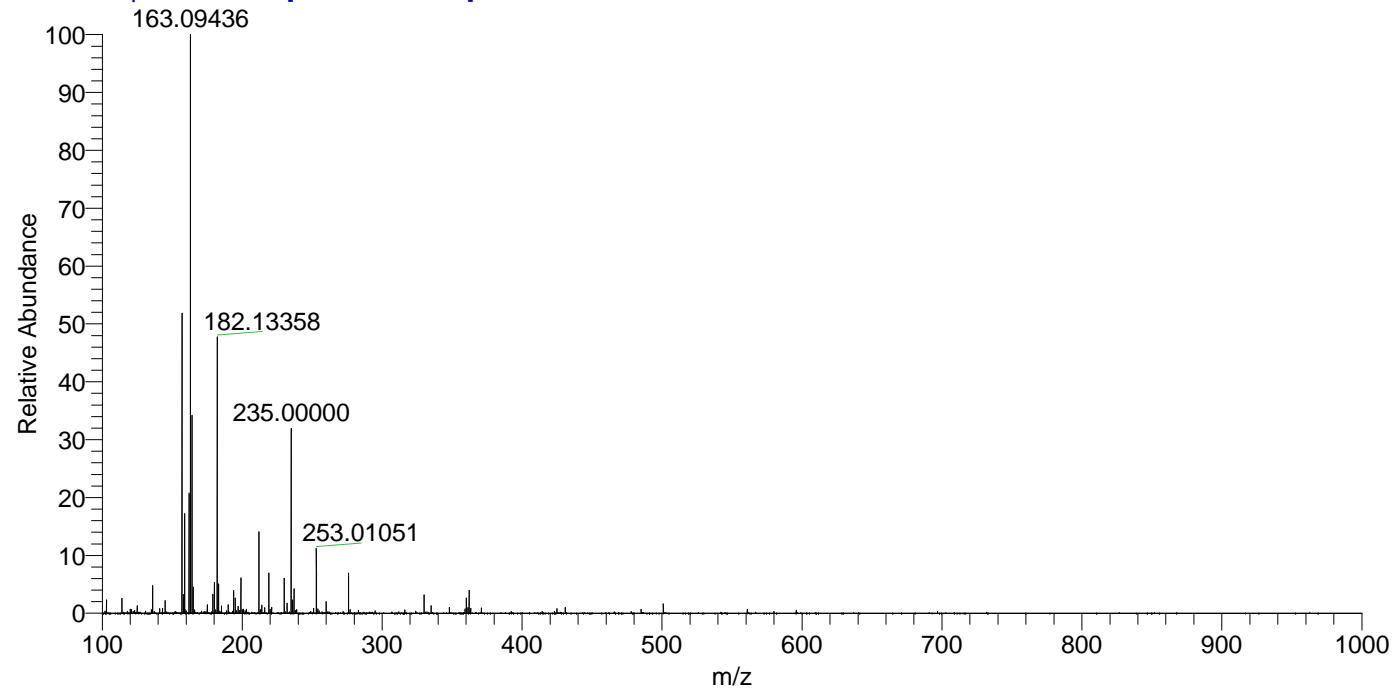
NL: 1.84E8
 Base Peak m/z= 100.00000-1500.00000
 F: FTMS + p ESI Full ms [100.00-1500.00] MS
 Arobustus_HDX

NL: 1.47E7
 Base Peak m/z= 182.13326-182.13508
 F: FTMS + p ESI Full ms [100.00-1500.00] MS
 Arobustus_HDX

Arobustus_HDX#533 RT: 3.48
 T: FTMS + p ESI Full ms [100.00-1500.00]
 m/z= 182.00000-183.00000

m/z	Intensity	Relative	Delta (ppm)	Composition
182.13358	14312427.0	100.00	-0.26	C ₁₀ H ₈ ² H ₅ O ₂ N ₂

Arobustus_HDX #533 RT: 3.48 AV: 1 NL: 2.99E7
 T: FTMS + p ESI Full ms [100.00-1500.00]



Arobustus_HDX #533 RT: 3.48 AV: 1 NL: 1.43E7
 T: FTMS + p ESI Full ms [100.00-1500.00]

