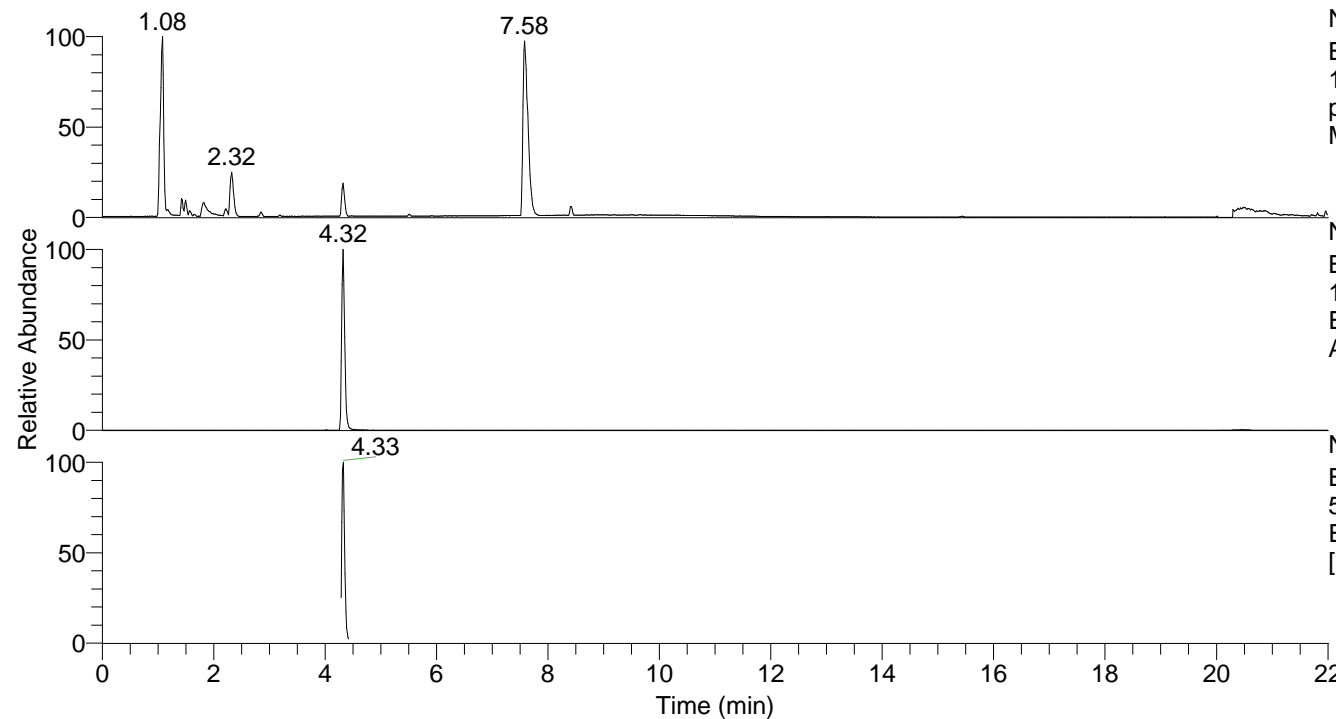


RT: 0.00 - 22.01



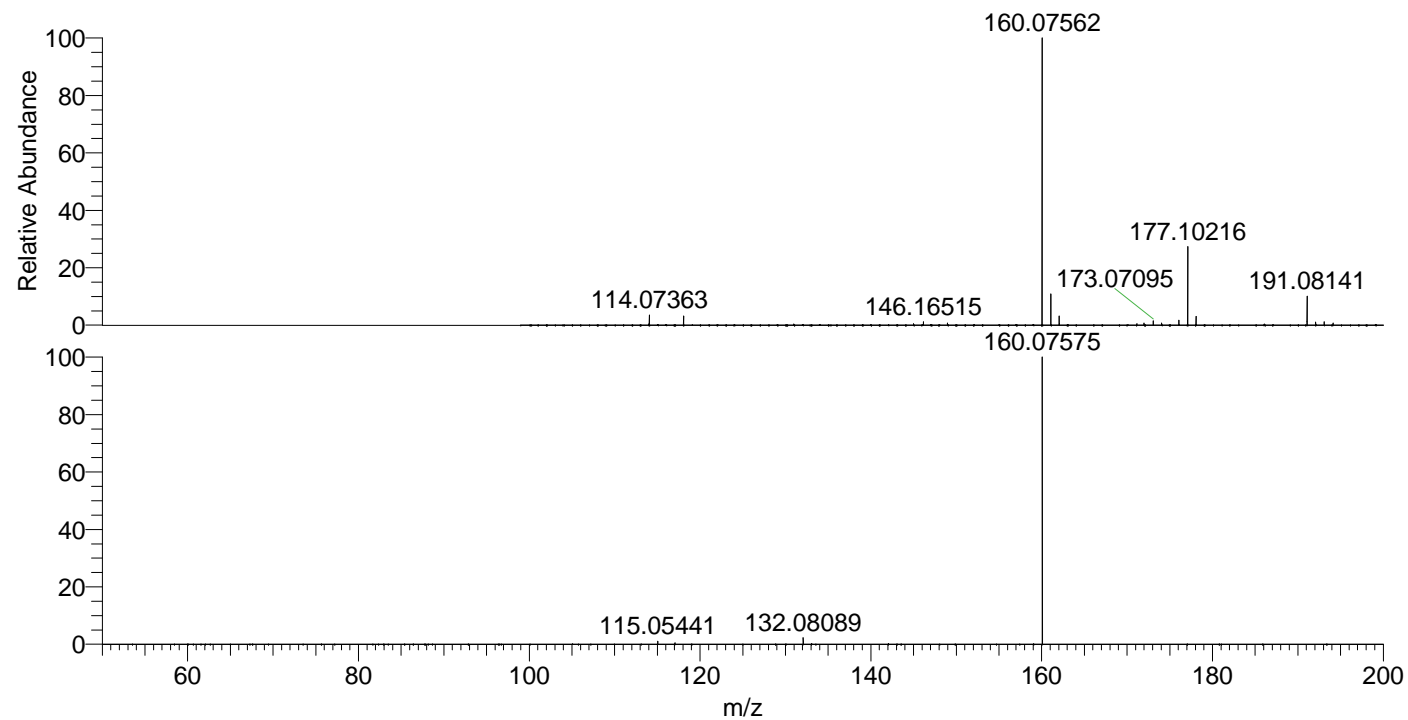
NL: 8.28E7
 Base Peak m/z=
 100.00000-1500.00000 F: FTMS +
 p ESI Full ms [100.00-1500.00]
 MS Arobustus

Arobustus#1720-1749 RT: 4.30-4.37 AV: 6
 F: FTMS + p ESI d Full ms2 177.10@h ...
 m/z= 50.00000-1000.00000

m/z	Intensity	Relative
115.05441	22700.0	1.01
132.08089	52648.7	2.35
160.07575	2238729.3	100.00

NL: 4.52E6
 Base Peak m/z=
 177.10189-177.10367 F: FTMS + p
 ESI Full ms [100.00-1500.00] MS
 Arobustus

NL: 3.72E6
 Base Peak m/z=
 50.00000-1500.00000 F: FTMS + p
 ESI d Full ms2 177.10@hcd35.00
 [50.00-200.00] MS Arobustus



NL: 1.57E7
 Arobustus#1729 RT: 4.32
 AV: 1 T: FTMS + p ESI
 Full ms [100.00-1500.00]

NL: 2.18E6
 Arobustus#1717-1754
 RT: 4.30-4.37 AV: 6 F:
 FTMS + p ESI d Full ms2
 177.10@hcd35.00
 [50.00-200.00]