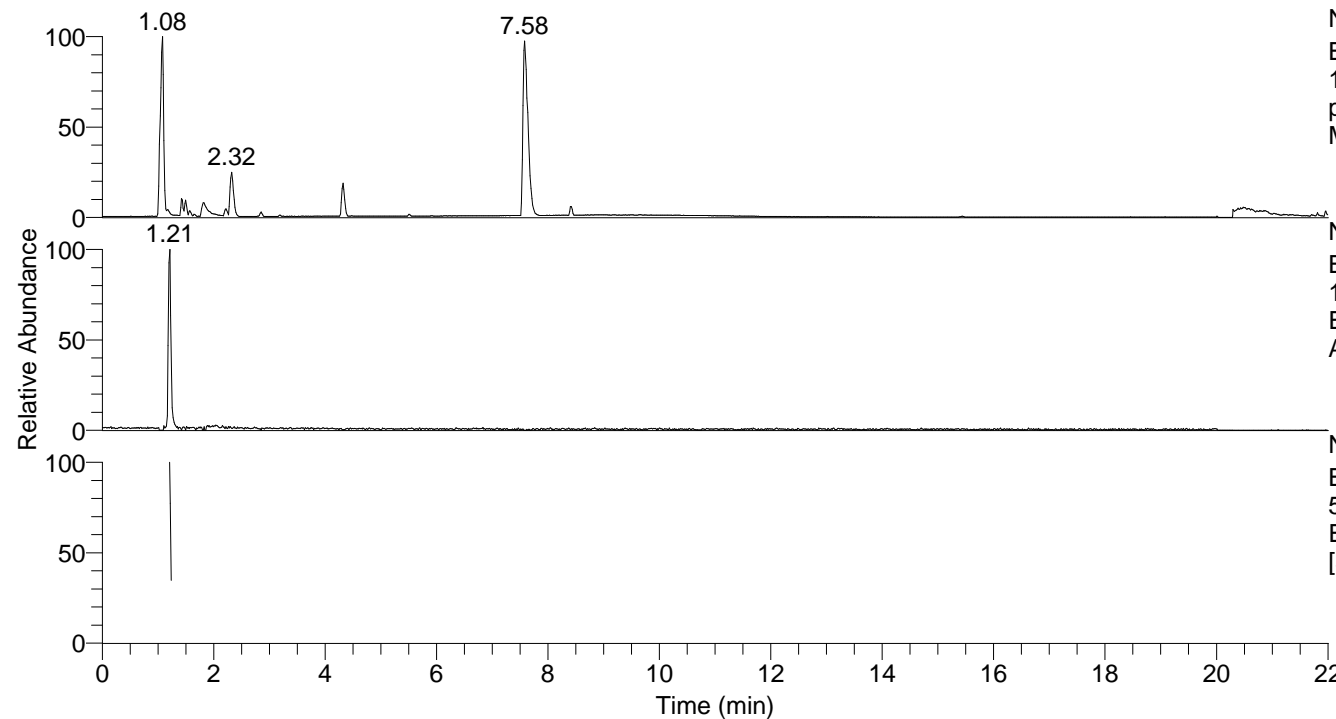


RT: 0.00 - 22.01



NL: 8.28E7
 Base Peak m/z=
 100.00000-1500.00000 F: FTMS +
 p ESI Full ms [100.00-1500.00]
 MS Arobustus

NL: 4.75E5
 Base Peak m/z=
 138.05481-138.05619 F: FTMS + p
 ESI Full ms [100.00-1500.00] MS
 Arobustus

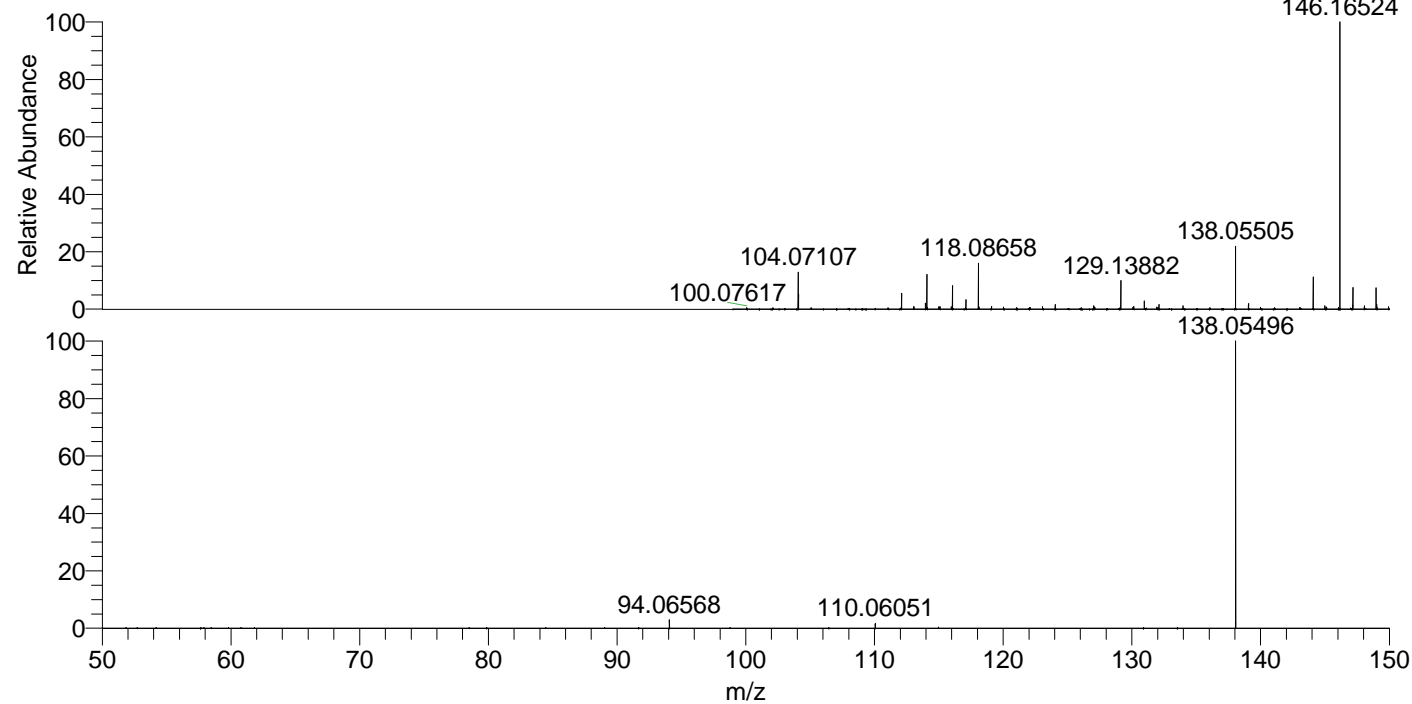
NL: 3.80E5
 Base Peak m/z=
 50.00000-1500.00000 F: FTMS + p
 ESI d Full ms2 138.06@hcd35.00
 [50.00-160.00] MS Arobustus

Arobustus#486-498 RT: 1.21-1.24 AV: 3

F: FTMS + p ESI d Full ms2 138.06 ...

m/z= 50.00000-1000.00000

m/z	Intensity	Relative
94.06568	7421.2	2.93
110.06051	4384.3	1.73
138.05496	253431.5	100.00



NL: 2.16E6
 Arobustus#487 RT: 1.21
 AV: 1 T: FTMS + p ESI
 Full ms [100.00-1500.00]

NL: 2.49E5
 Arobustus#441-546 RT:
 1.21-1.24 AV: 3 F: FTMS
 + p ESI d Full ms2
 138.06@hcd35.00
 [50.00-160.00]