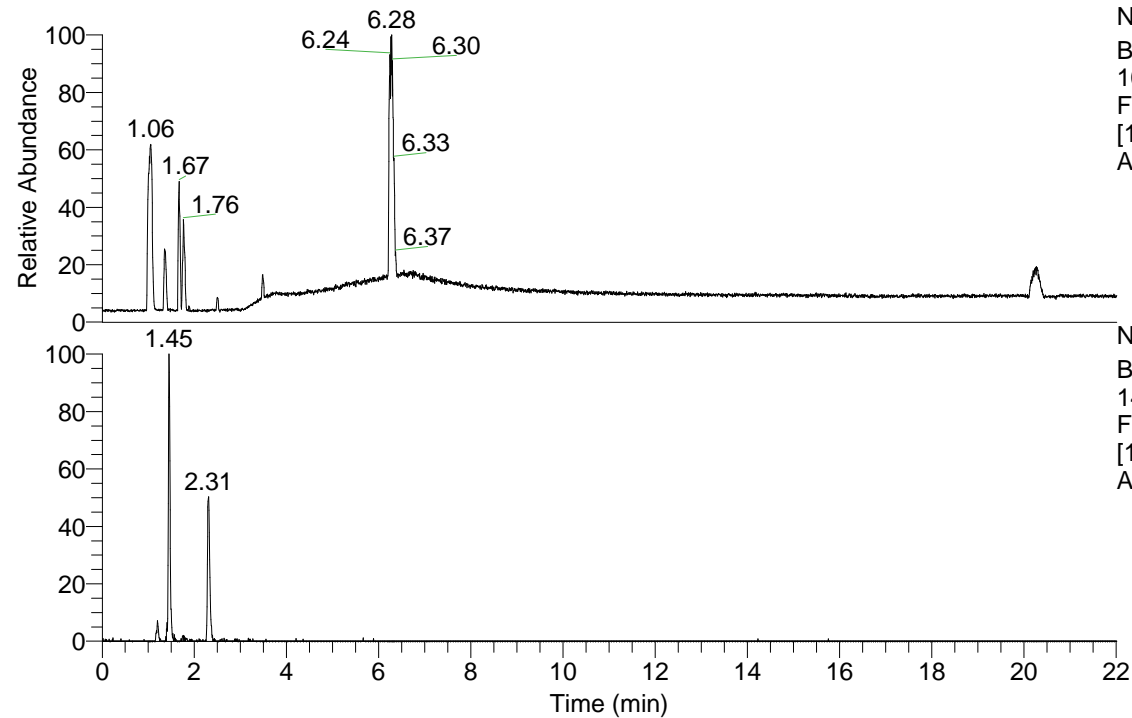


RT: 0.00 - 22.01

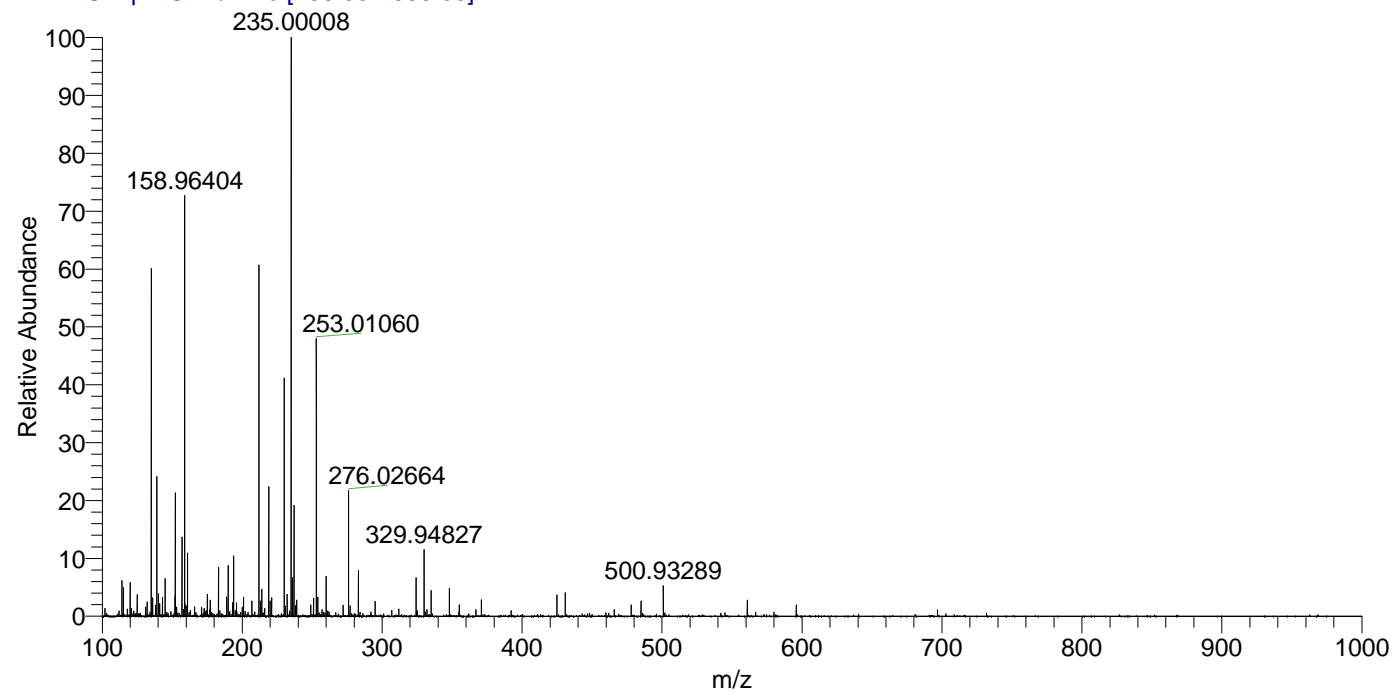


Arobustus_HDX#221 RT: 1.45
 T: FTMS + p ESI Full ms [100.00-1500.00]
 m/z= 140.00000-141.00000

m/z	Intensity	Relative	Delta (ppm)	Composition
140.06459	314266.3	100.00	-0.19	C ₅ H ₂ ² H ₃ ON ₄

NL: 3.14E5
 Base Peak m/z= 140.06447-140.06587 F:
 FTMS + p ESI Full ms [100.00-1500.00] MS
 Arobustus_HDX

Arobustus_HDX #221 RT: 1.45 AV: 1 NL: 7.80E6
 T: FTMS + p ESI Full ms [100.00-1500.00]



Arobustus_HDX #221 RT: 1.45 AV: 1 NL: 4.69E6
 T: FTMS + p ESI Full ms [100.00-1500.00]

