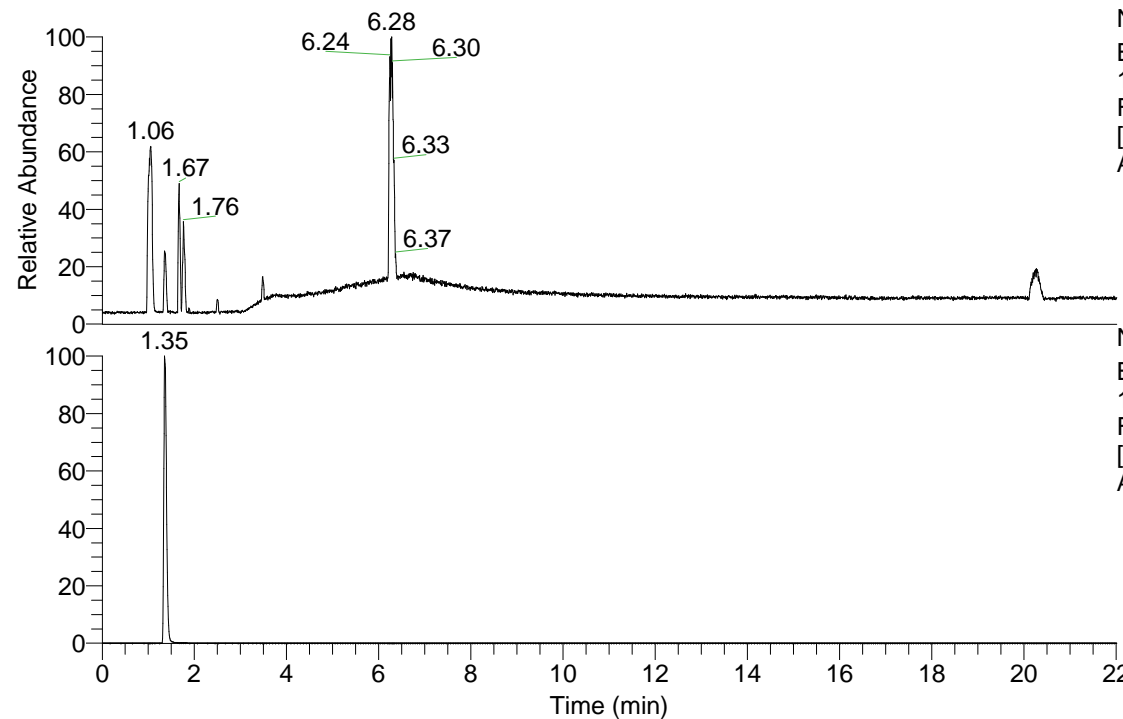


RT: 0.00 - 22.01



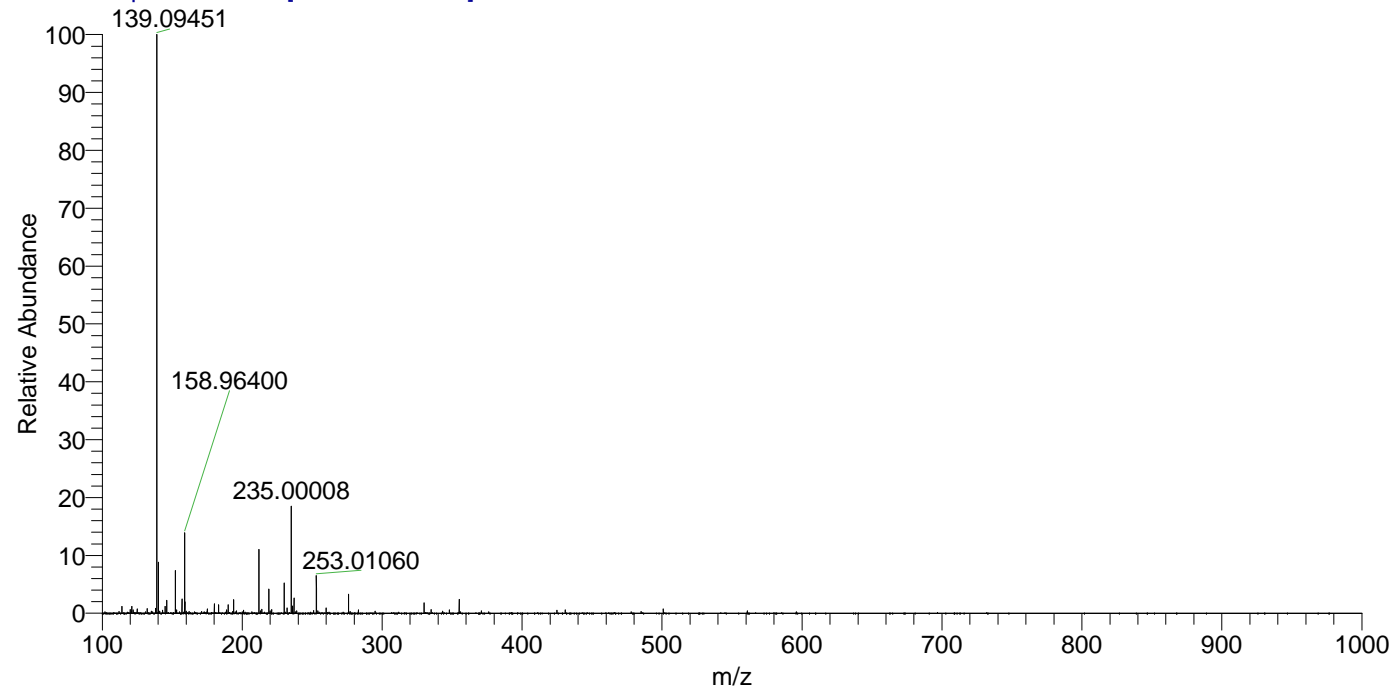
NL: 1.84E8
 Base Peak m/z= 100.00000-1500.00000
 F: FTMS + p ESI Full ms [100.00-1500.00] MS
 Arobustus_HDX

NL: 4.67E7
 Base Peak m/z= 139.09437-139.09577 F:
 FTMS + p ESI Full ms [100.00-1500.00] MS
 Arobustus_HDX

Arobustus_HDX#205 RT: 1.35
 T: FTMS + p ESI Full ms [100.00-1500.00]
 m/z= 139.00000-140.00000

m/z	Intensity	Relative	Delta (ppm)	Composition
139.09451	39980036.0	100.00	-0.06	C ₈ H ₇ ² H ₃ O ₂ N

Arobustus_HDX #205 RT: 1.35 AV: 1 NL: 3.99E7
 T: FTMS + p ESI Full ms [100.00-1500.00]



Arobustus_HDX #205 RT: 1.35 AV: 1 NL: 3.99E7
 T: FTMS + p ESI Full ms [100.00-1500.00]

