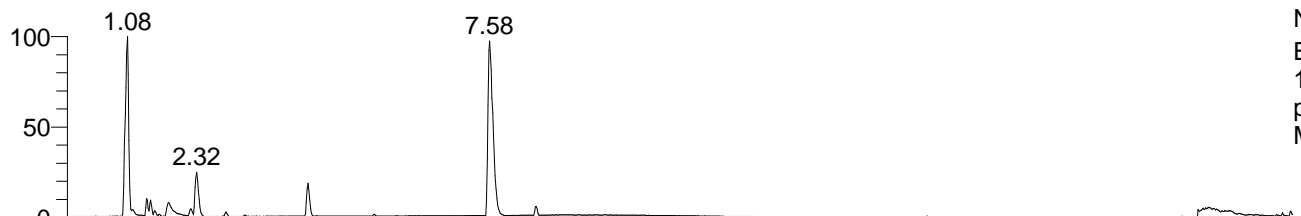


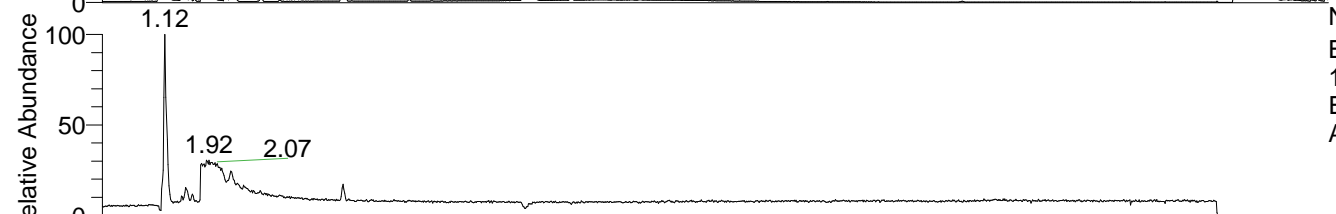
RT: 0.00 - 22.01



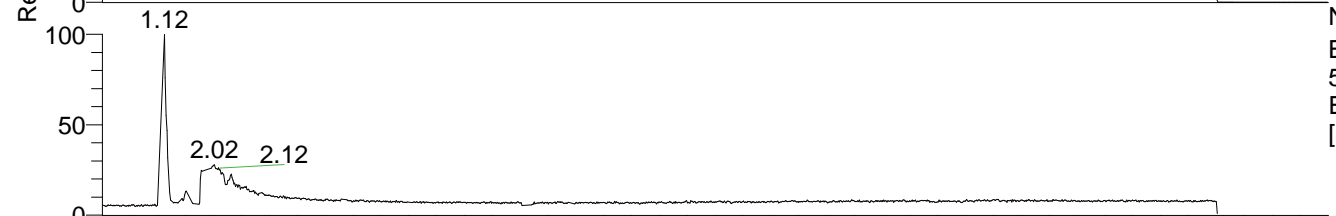
NL: 8.28E7
 Base Peak m/z=
 100.00000-1500.00000 F: FTMS +
 p ESI Full ms [100.00-1500.00]
 MS Arobustus

Arobustus#448-485 RT: 1.12-1.21 AV: 6
 F: FTMS + p ESI d Full ms2 118.09@h ...
 m/z= 50.00000-1000.00000

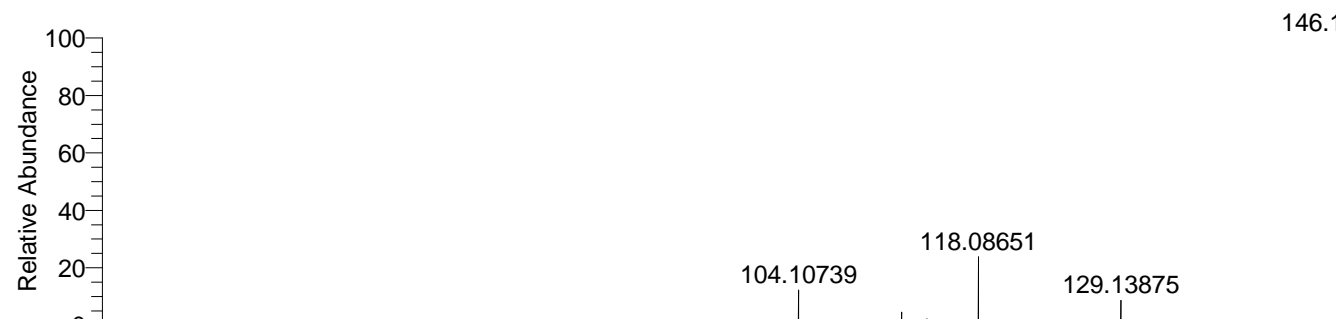
m/z	Intensity	Relative
58.06594	92680.8	5.02
59.07380	100560.5	5.44
118.08659	1846947.1	100.00



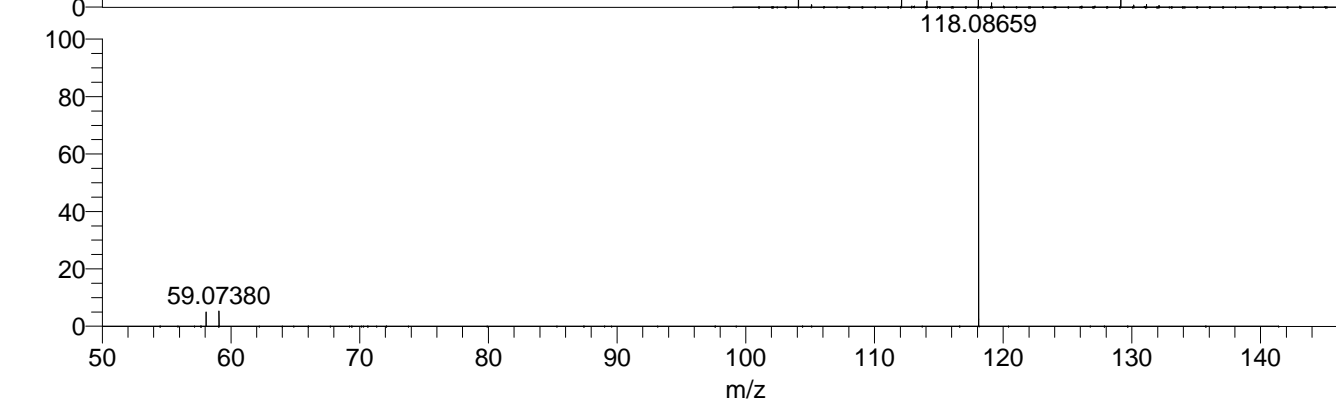
NL: 3.03E6
 Base Peak m/z=
 118.08621-118.08739 F: FTMS + p
 ESI Full ms [100.00-1500.00] MS
 Arobustus



NL: 3.67E6
 Base Peak m/z=
 50.00000-1500.00000 F: FTMS + p
 ESI d Full ms2 118.09@hcd35.00
 [50.00-140.00] MS Arobustus



NL: 1.22E7
 Arobustus#451 RT: 1.12
 AV: 1 T: FTMS + p ESI
 Full ms [100.00-1500.00]



NL: 1.85E6
 Arobustus#429-488 RT:
 1.12-1.21 AV: 6 F: FTMS
 + p ESI d Full ms2
 118.09@hcd35.00
 [50.00-140.00]