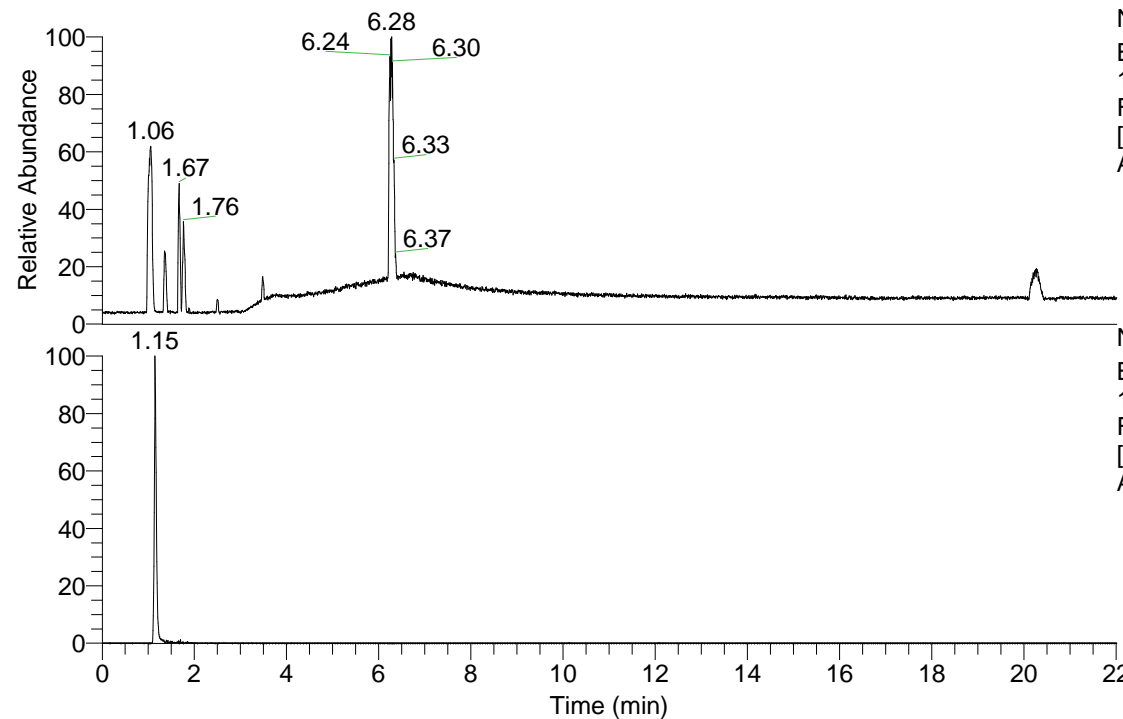


RT: 0.00 - 22.01



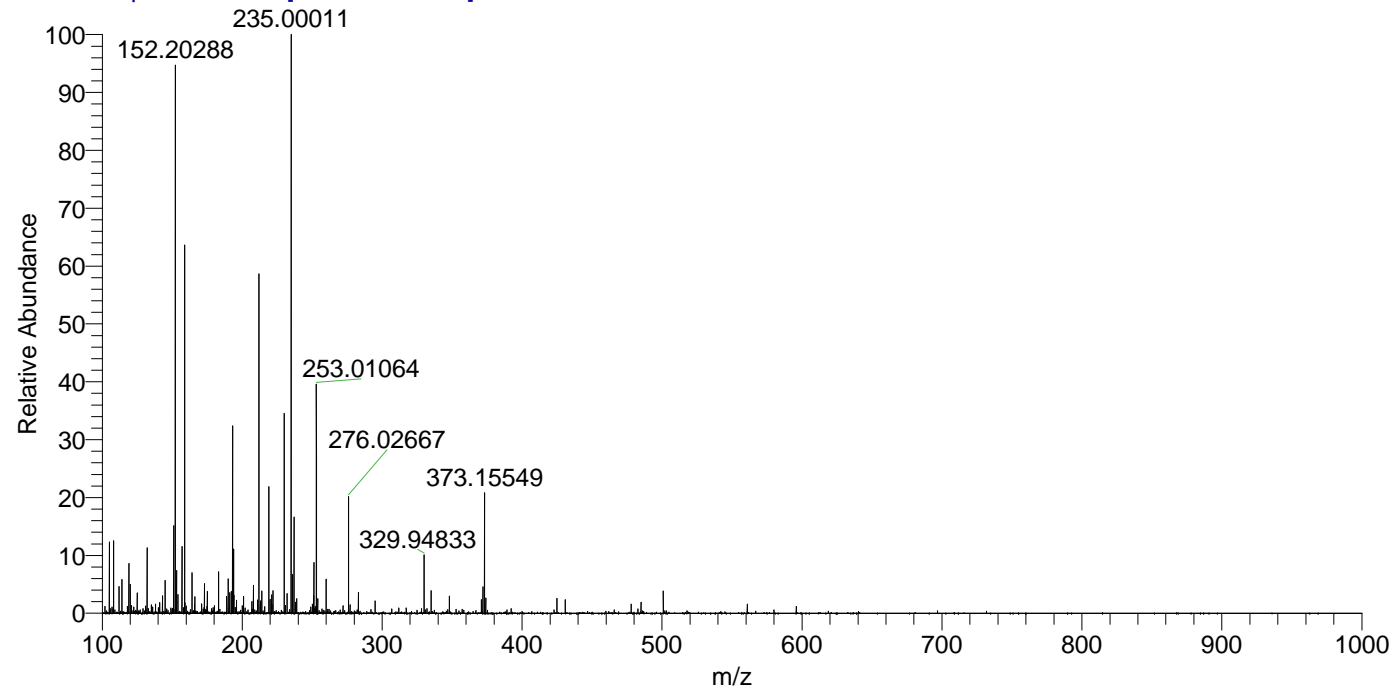
NL: 1.84E8
 Base Peak m/z= 100.00000-1500.00000
 F: FTMS + p ESI Full ms [100.00-1500.00] MS
 Arobustus_HDX

NL: 1.06E6
 Base Peak m/z= 108.09572-108.09680 F:
 FTMS + p ESI Full ms [100.00-1500.00] MS
 Arobustus_HDX

Arobustus_HDX#175 RT: 1.15
 T: FTMS + p ESI Full ms [100.00-1500.00]
 m/z= 108.00000-109.00000

m/z	Intensity	Relative	Delta (ppm)	Composition
108.09610	978208.9	100.00	3.59	C ₄ H ₆ ² H ₄ O ₂ N

Arobustus_HDX #175 RT: 1.15 AV: 1 NL: 7.78E6
 T: FTMS + p ESI Full ms [100.00-1500.00]



Arobustus_HDX #175 RT: 1.15 AV: 1 NL: 9.75E5
 T: FTMS + p ESI Full ms [100.00-1500.00]

