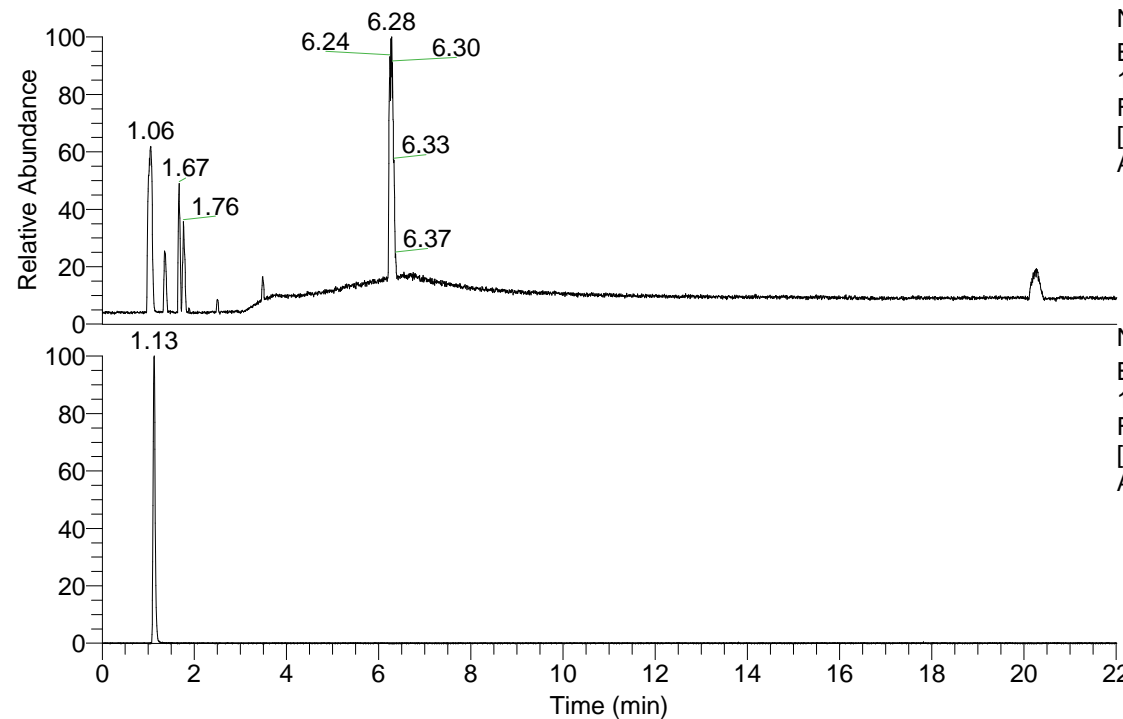


RT: 0.00 - 22.01



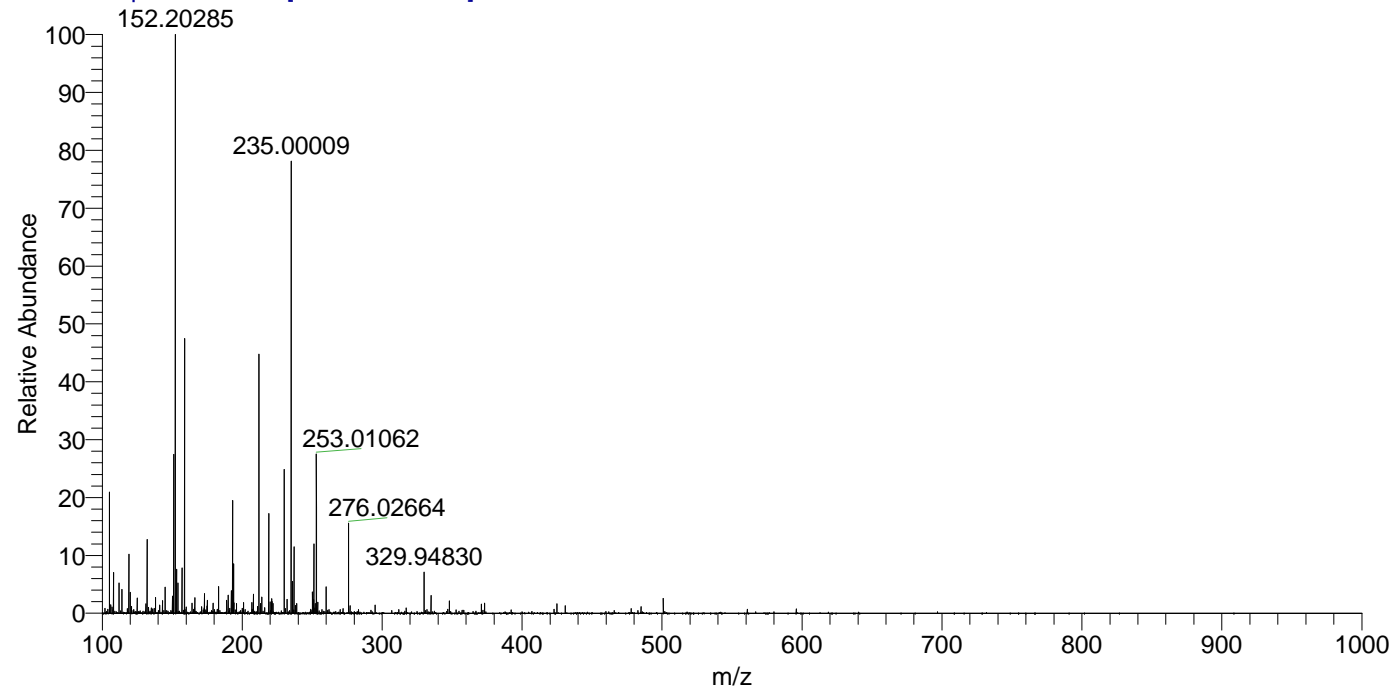
NL: 1.84E8  
 Base Peak m/z= 100.00000-1500.00000  
 F: FTMS + p ESI Full ms [100.00-1500.00] MS  
 Arobustus\_HDX

NL: 2.35E6  
 Base Peak m/z= 105.11329-105.11435 F:  
 FTMS + p ESI Full ms [100.00-1500.00] MS  
 Arobustus\_HDX

Arobustus\_HDX#172 RT: 1.13  
 T: FTMS + p ESI Full ms [100.00-1500.00]  
 m/z= 105.00000-106.00000

m/z	Intensity	Relative	Delta (ppm)	Composition
105.11368	2175826.5	100.00	3.91	C <sub>5</sub> H <sub>13</sub> <sup>2</sup> H O N

Arobustus\_HDX #172 RT: 1.13 AV: 1 NL: 9.94E6  
 T: FTMS + p ESI Full ms [100.00-1500.00]



Arobustus\_HDX #172 RT: 1.13 AV: 1 NL: 2.08E6  
 T: FTMS + p ESI Full ms [100.00-1500.00]

