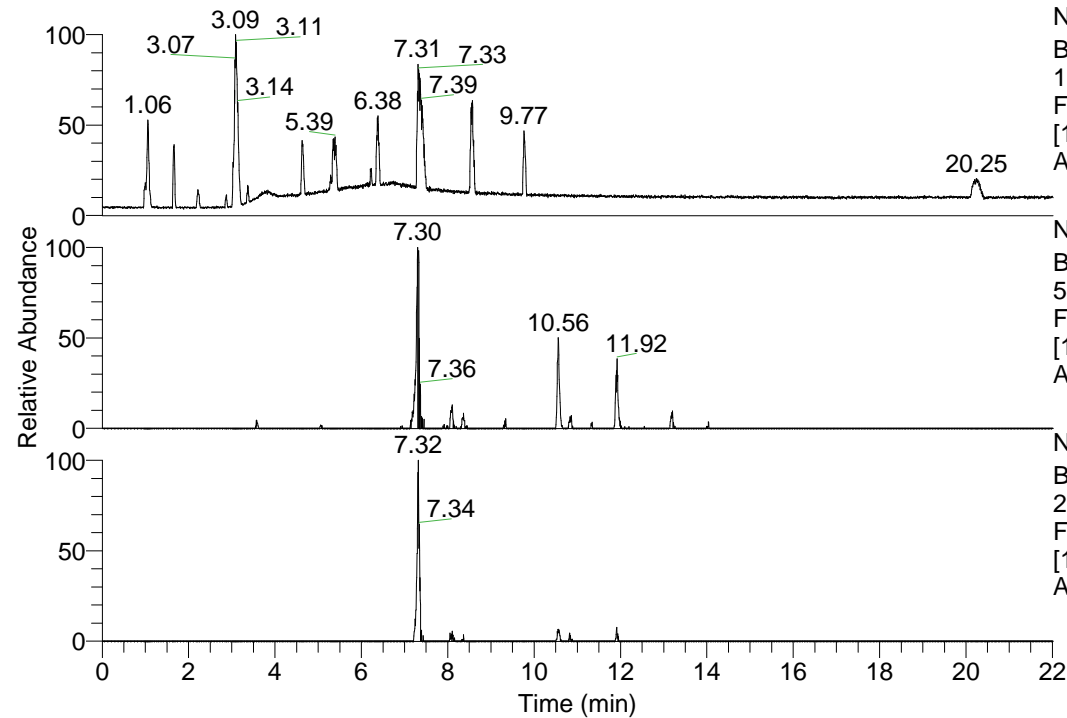


RT: 0.00 - 22.01



NL: 1.69E8
 Base Peak m/z=
 100.00000-1500.00000 F:
 FTMS + p ESI Full ms
 [100.00-1500.00] MS
 Apotteri_HDX

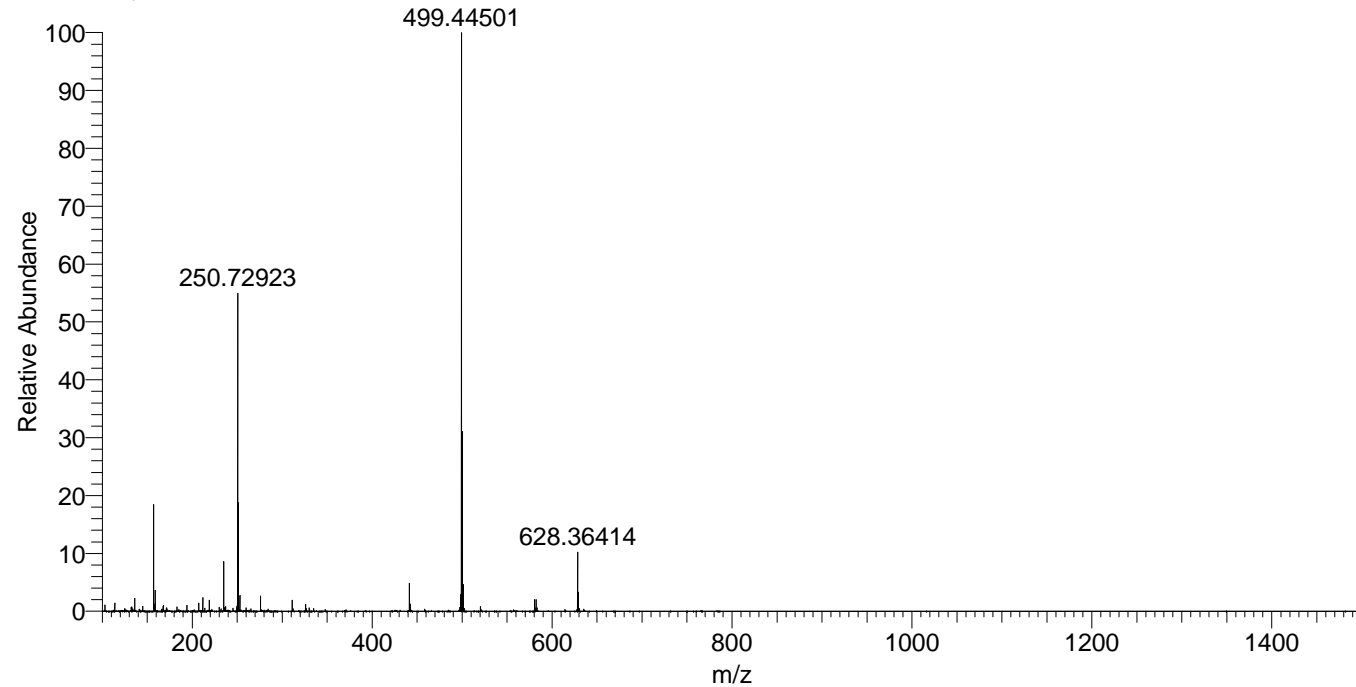
Apotteri_HDX#1172 RT: 7.30
 T: FTMS + p ESI Full ms [100.00-1500.00]
 m/z = 557.00000-558.00000

m/z	Intensity	Relative	Delta (ppm)	Composition
557.45135	278214.2	100.00	-0.20	C ₂₈ H ₄₅ ² H ₇ O ₄ N ₇
			2.58	C ₂₈ H ₄₃ ² H ₈ O ₄ N ₇
			-2.98	C ₂₈ H ₄₇ ² H ₆ O ₄ N ₇
			5.35	C ₂₈ H ₄₁ ² H ₉ O ₄ N ₇
			-5.76	C ₂₈ H ₄₉ ² H ₅ O ₄ N ₇

NL: 2.99E5
 Base Peak m/z=
 557.44613-557.45171 F:
 FTMS + p ESI Full ms
 [100.00-1500.00] MS
 Apotteri_HDX

NL: 3.73E5
 Base Peak m/z=
 279.73011-279.73291 F:
 FTMS + p ESI Full ms
 [100.00-1500.00] MS
 Apotteri_HDX

Apotteri_HDX #1172 RT: 7.30 AV: 1 NL: 1.10E8
 T: FTMS + p ESI Full ms [100.00-1500.00]



Apotteri_HDX #1172 RT: 7.30 AV: 1 NL: 2.71E5
 T: FTMS + p ESI Full ms [100.00-1500.00]

