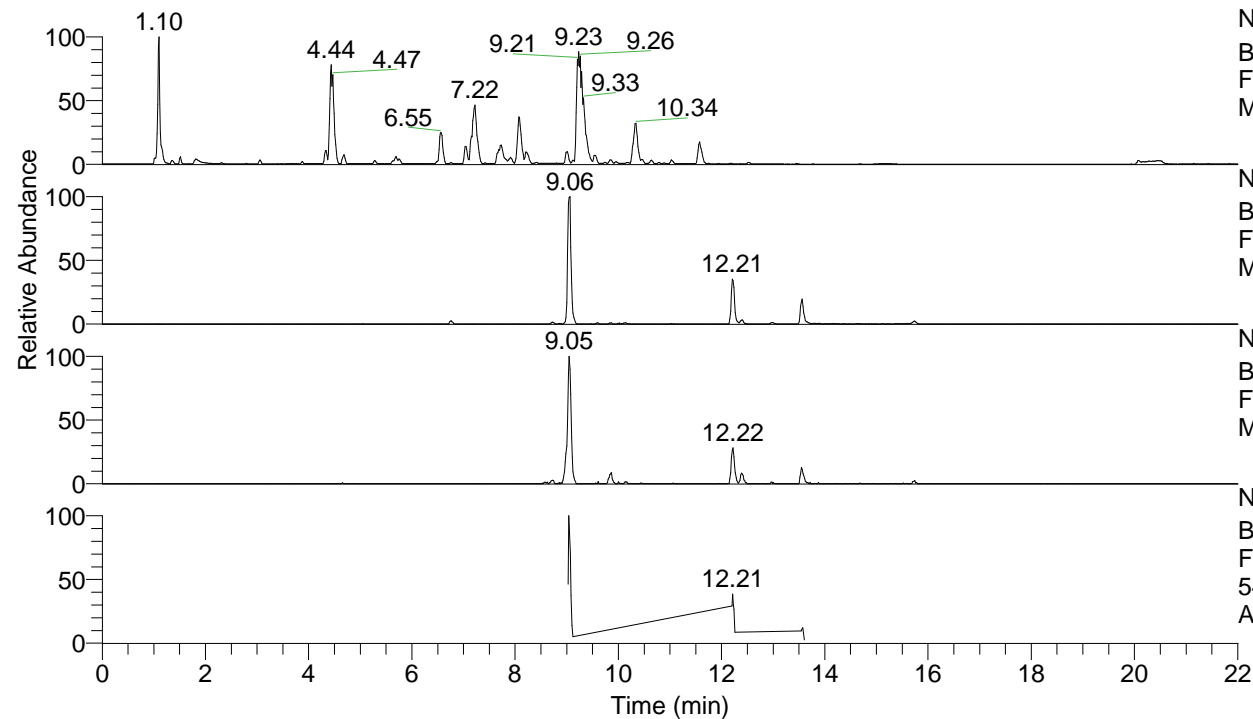


RT: 0.00 - 22.00



NL: 1.25E8
 Base Peak m/z= 100.00000-1500.00000 F:
 FTMS + p ESI Full ms [100.00-1500.00]
 MS Apotteri

NL: 1.40E6
 Base Peak m/z= 548.38969-548.39517 F:
 FTMS + p ESI Full ms [100.00-1500.00]
 MS Apotteri

NL: 3.36E5
 Base Peak m/z= 274.69876-274.70150 F:
 FTMS + p ESI Full ms [100.00-1500.00]
 MS Apotteri

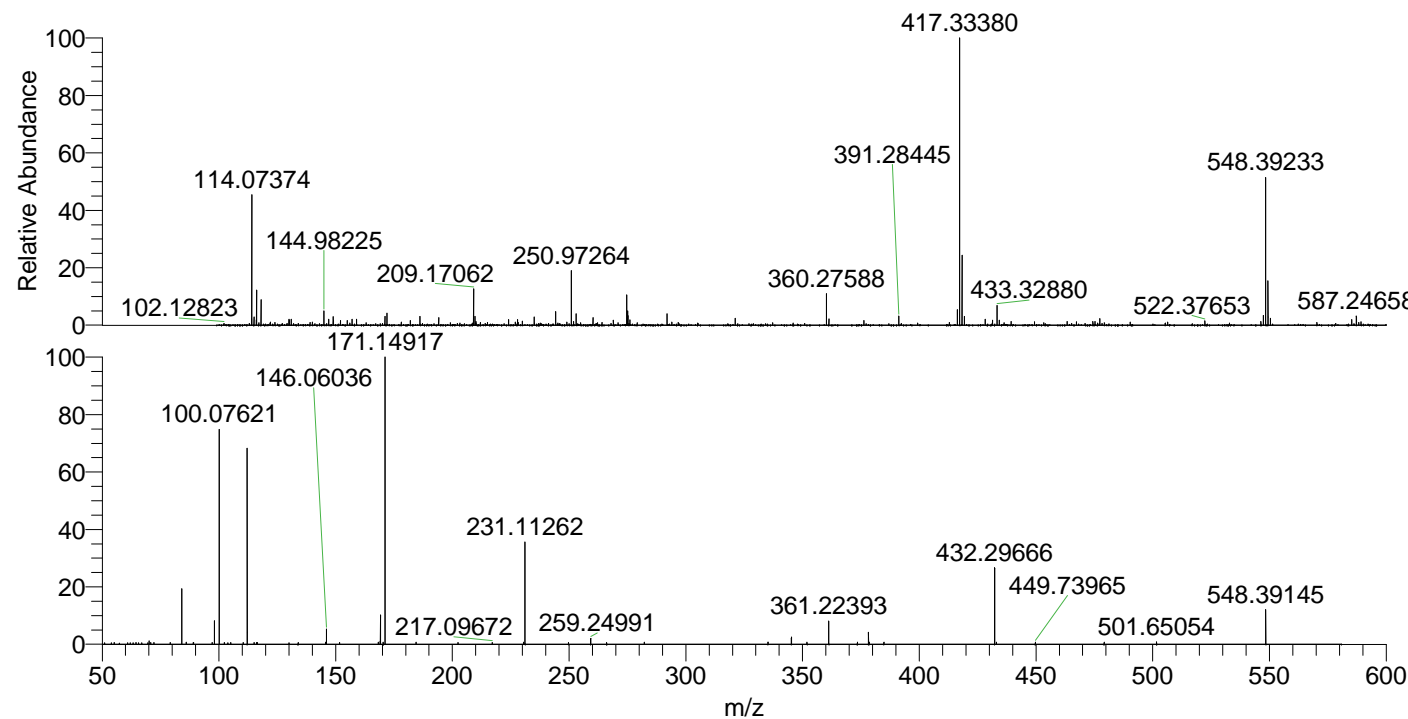
NL: 2.23E5
 Base Peak m/z= 50.00000-1500.00000 F:
 FTMS + p ESI d Full ms2
 548.39@hcd35.00 [50.00-575.00] MS
 Apotteri

Apotteri#3623-3645 RT: 9.03-9.08 AV: 5

F: FTMS + p ESI d Full ms2 548.39 ...

m/z= 50.00000-1000.00000

m/z	Intensity	Relative
55.10059	907.4	0.62
64.44109	837.0	0.58
70.06623	1632.8	1.12
70.79354	834.6	0.57
72.15317	820.0	0.56
79.19988	844.2	0.58
84.08160	28689.4	19.75
85.95449	1049.6	0.72
88.97123	823.9	0.57
89.11120	865.4	0.60
97.15458	901.9	0.62
98.09714	11835.5	8.15
100.07621	107959.2	74.30
102.32414	884.1	0.61
103.86188	776.8	0.53
105.00668	858.4	0.59
110.40235	888.4	0.61
112.10548	1417.3	0.98
112.11251	98061.0	67.49
115.12332	934.0	0.64
116.11724	858.1	0.59
116.40250	894.7	0.62
130.03700	797.4	0.55
133.92447	850.7	0.59
145.69435	1035.9	0.71
146.06036	7660.4	5.27
151.62081	919.7	0.63
168.26565	1022.3	0.70
169.13471	1515.9	1.04
169.17050	15165.4	10.44
170.38671	974.4	0.67
171.14917	145299.0	100.00
184.48676	982.4	0.68
202.43510	912.9	0.63
217.09672	983.4	0.68
230.55729	1043.3	0.72
231.11262	51163.9	35.21
249.76694	945.4	0.65
259.24991	2961.8	2.04
266.09276	888.0	0.61
282.25618	1005.5	0.69
335.21271	1126.5	0.78
345.22908	3574.3	2.46
351.90949	1032.6	0.71
361.22393	11704.0	8.06
373.49434	991.7	0.68
378.25239	6144.5	4.23
378.57284	1063.6	0.73
384.86302	1024.9	0.71
432.29666	39794.1	27.39
433.04588	1078.0	0.74
449.73965	978.6	0.67
479.24686	1085.1	0.75
501.65054	1138.0	0.78
548.39145	17346.8	11.94



NL: 2.70E6
 Apotteri#3637 RT: 9.06
 AV: 1 T: FTMS + p ESI
 Full ms [100.00-1500.00]

NL: 1.44E5
 Apotteri#3622-3649 RT:
 9.03-9.08 AV: 5 F: FTMS
 + p ESI d Full ms2
 548.39@hcd35.00
 [50.00-575.00]