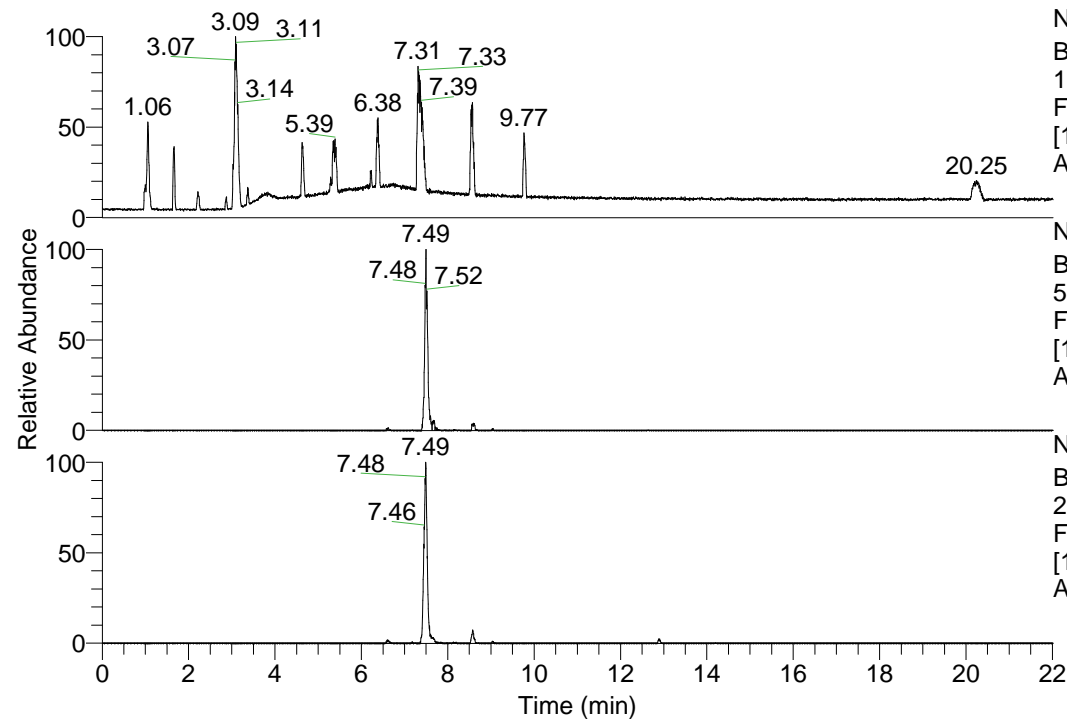


RT: 0.00 - 22.01



NL: 1.69E8  
 Base Peak m/z=  
 100.00000-1500.00000 F:  
 FTMS + p ESI Full ms  
 [100.00-1500.00] MS  
 Apotteri\_HDX

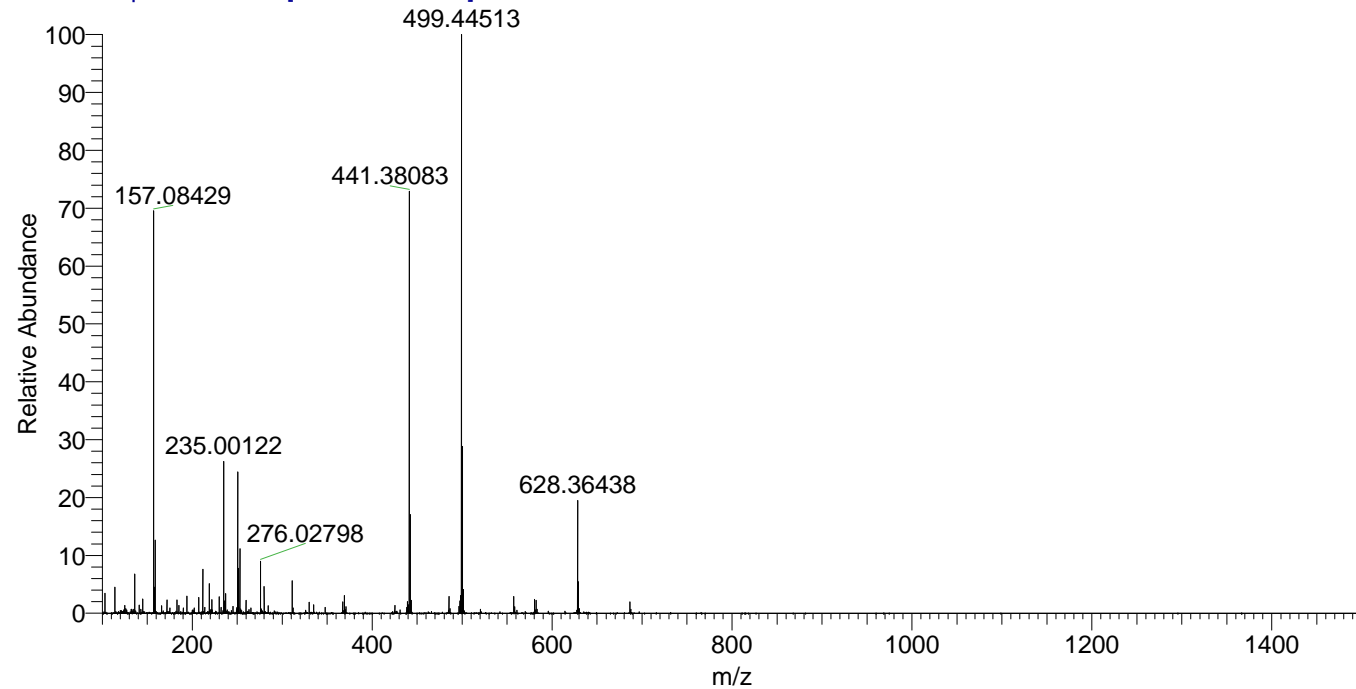
Apotteri\_HDX#1207 RT: 7.49  
 T: FTMS + p ESI Full ms [100.00-1500.00]  
 m/z= 557.00000-558.00000

m/z	Intensity	Relative	Delta (ppm)	Composition
557.50964	1078117.5	100.00	-0.84	C <sub>29</sub> H <sub>49</sub> <sup>2</sup> H <sub>8</sub> O <sub>2</sub> N <sub>8</sub>
			1.93	C <sub>29</sub> H <sub>47</sub> <sup>2</sup> H <sub>9</sub> O <sub>2</sub> N <sub>8</sub>
			-3.62	C <sub>29</sub> H <sub>51</sub> <sup>2</sup> H <sub>7</sub> O <sub>2</sub> N <sub>8</sub>
			4.71	C <sub>29</sub> H <sub>45</sub> <sup>2</sup> H <sub>10</sub> O <sub>2</sub> N <sub>8</sub>

NL: 1.28E6  
 Base Peak m/z=  
 557.50478-557.51036 F:  
 FTMS + p ESI Full ms  
 [100.00-1500.00] MS  
 Apotteri\_HDX

NL: 1.75E6  
 Base Peak m/z=  
 279.75943-279.76223 F:  
 FTMS + p ESI Full ms  
 [100.00-1500.00] MS  
 Apotteri\_HDX

Apotteri\_HDX #1207 RT: 7.49 AV: 1 NL: 3.65E7  
 T: FTMS + p ESI Full ms [100.00-1500.00]



Apotteri\_HDX #1207 RT: 7.49 AV: 1 NL: 1.05E6  
 T: FTMS + p ESI Full ms [100.00-1500.00]

