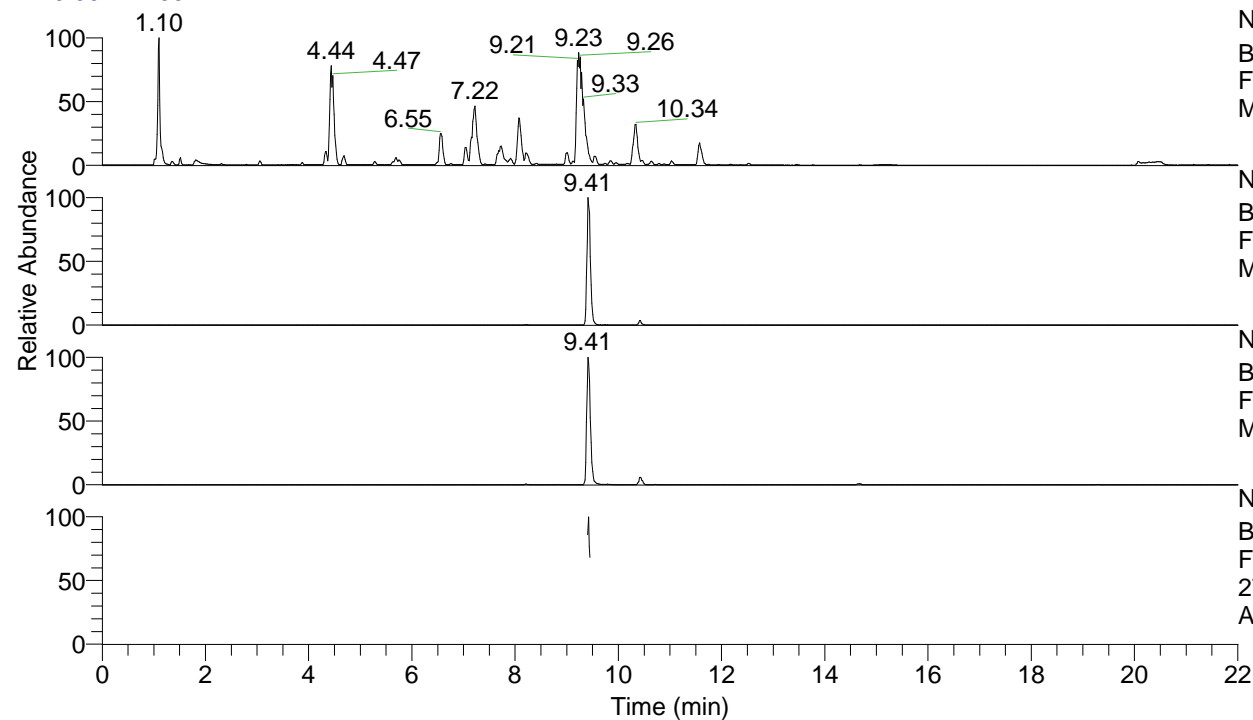


RT: 0.00 - 22.00



NL: 1.25E8
 Base Peak m/z= 100.00000-1500.00000 F:
 FTMS + p ESI Full ms [100.00-1500.00]
 MS Apotteri

NL: 2.35E6
 Base Peak m/z= 547.44206-547.44754 F:
 FTMS + p ESI Full ms [100.00-1500.00]
 MS Apotteri

NL: 1.75E6
 Base Peak m/z= 274.22494-274.22768 F:
 FTMS + p ESI Full ms [100.00-1500.00]
 MS Apotteri

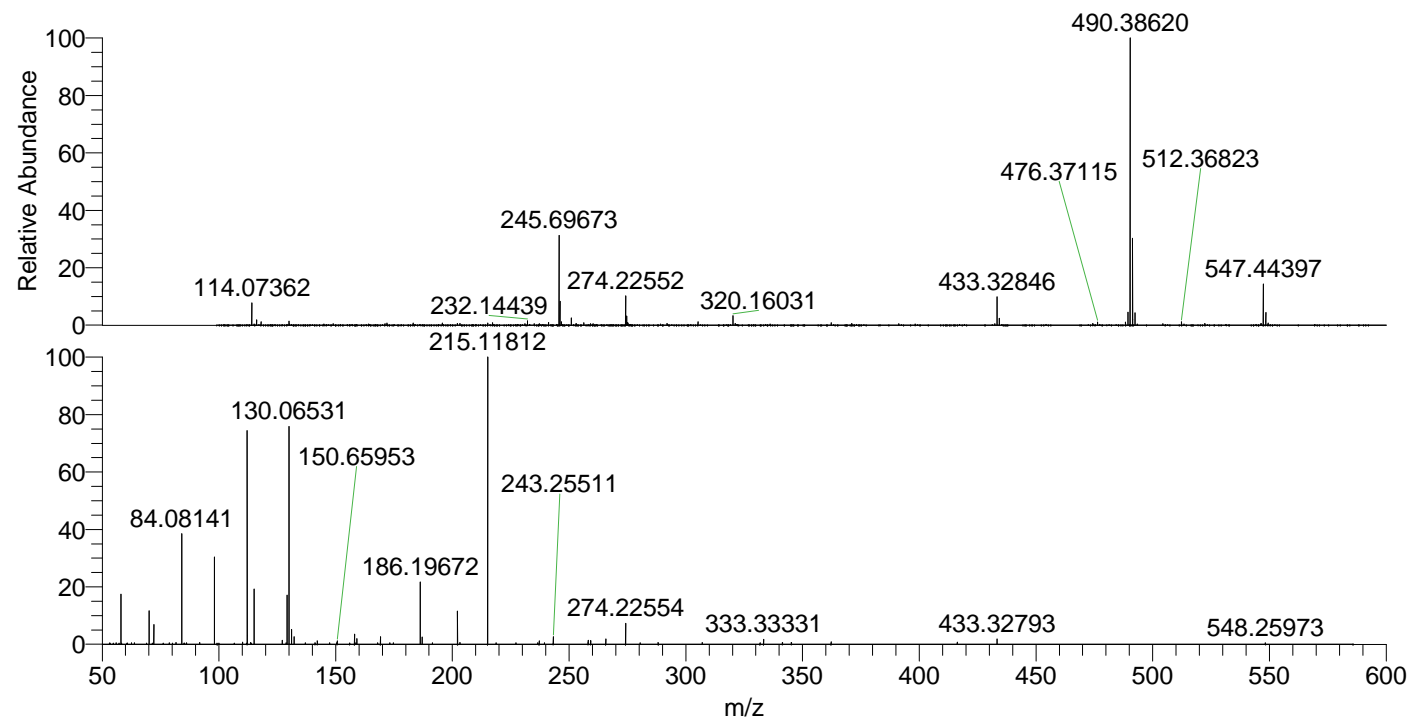
NL: 2.06E5
 Base Peak m/z= 50.00000-1500.00000 F:
 FTMS + p ESI d Full ms2
 274.23@hcd35.00 [50.00-580.00] MS
 Apotteri

Apotteri#3786-3803 RT: 9.41-9.45 AV: 4

F: FTMS + p ESI d Full ms2 274.23 ...

m/z= 50.00000-1000.00000

m/z	Intensity	Relative
58.06599	28003.2	16.93
63.74895	828.4	0.50
70.06591	18739.9	11.33
72.08156	11423.3	6.91
81.65504	899.1	0.54
84.08141	61816.5	37.37
86.09740	887.5	0.54
91.75765	940.5	0.57
98.09695	50200.1	30.35
110.09668	1131.7	0.68
112.11254	121342.7	73.36
113.61827	1034.5	0.63
115.12337	31633.9	19.12
127.12291	2173.7	1.31
129.13894	28206.9	17.05
130.06531	122925.7	74.31
131.11830	8233.9	4.98
132.14994	4215.0	2.55
137.03442	834.4	0.50
142.14649	1830.7	1.11
150.65953	1971.3	1.19
158.05994	5559.2	3.36
159.09217	3182.1	1.92
168.04926	895.1	0.54
169.17016	4285.2	2.59
173.22167	862.5	0.52
186.19672	34919.3	21.11
187.08743	3984.0	2.41
191.40421	847.7	0.51
202.19175	18486.5	11.18
203.22298	996.9	0.60
215.11812	165413.0	100.00
237.18426	1841.1	1.11
243.25511	4243.6	2.57
258.15992	2191.0	1.32
259.24869	2076.5	1.26
265.71347	2966.9	1.79
274.22554	11685.1	7.06
288.16995	1007.3	0.61
307.06787	985.5	0.60
331.81427	831.0	0.50
333.33331	2732.5	1.65
341.38623	955.8	0.58
345.22586	1000.3	0.60
362.25504	1457.5	0.88
416.30508	1073.6	0.65
433.32793	2992.2	1.81
548.25973	873.6	0.53



NL: 1.62E7
 Apotteri#3787 RT: 9.41
 AV: 1 T: FTMS + p ESI
 Full ms [100.00-1500.00]

NL: 1.60E5
 Apotteri#3783-3805 RT:
 9.41-9.45 AV: 4 F: FTMS
 + p ESI d Full ms2
 274.23@hcd35.00
 [50.00-580.00]