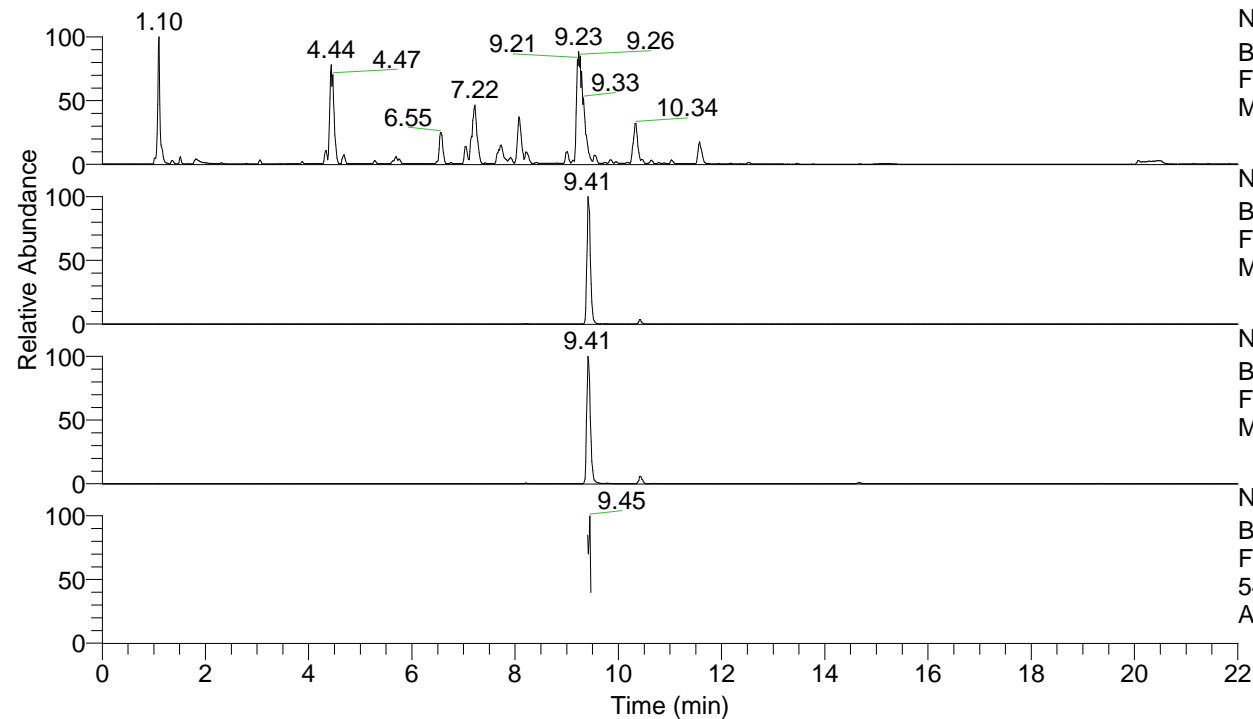


RT: 0.00 - 22.00



NL: 1.25E8
 Base Peak m/z= 100.00000-1500.00000 F:
 FTMS + p ESI Full ms [100.00-1500.00]
 MS Apotteri

NL: 2.35E6
 Base Peak m/z= 547.44206-547.44754 F:
 FTMS + p ESI Full ms [100.00-1500.00]
 MS Apotteri

NL: 1.75E6
 Base Peak m/z= 274.22494-274.22768 F:
 FTMS + p ESI Full ms [100.00-1500.00]
 MS Apotteri

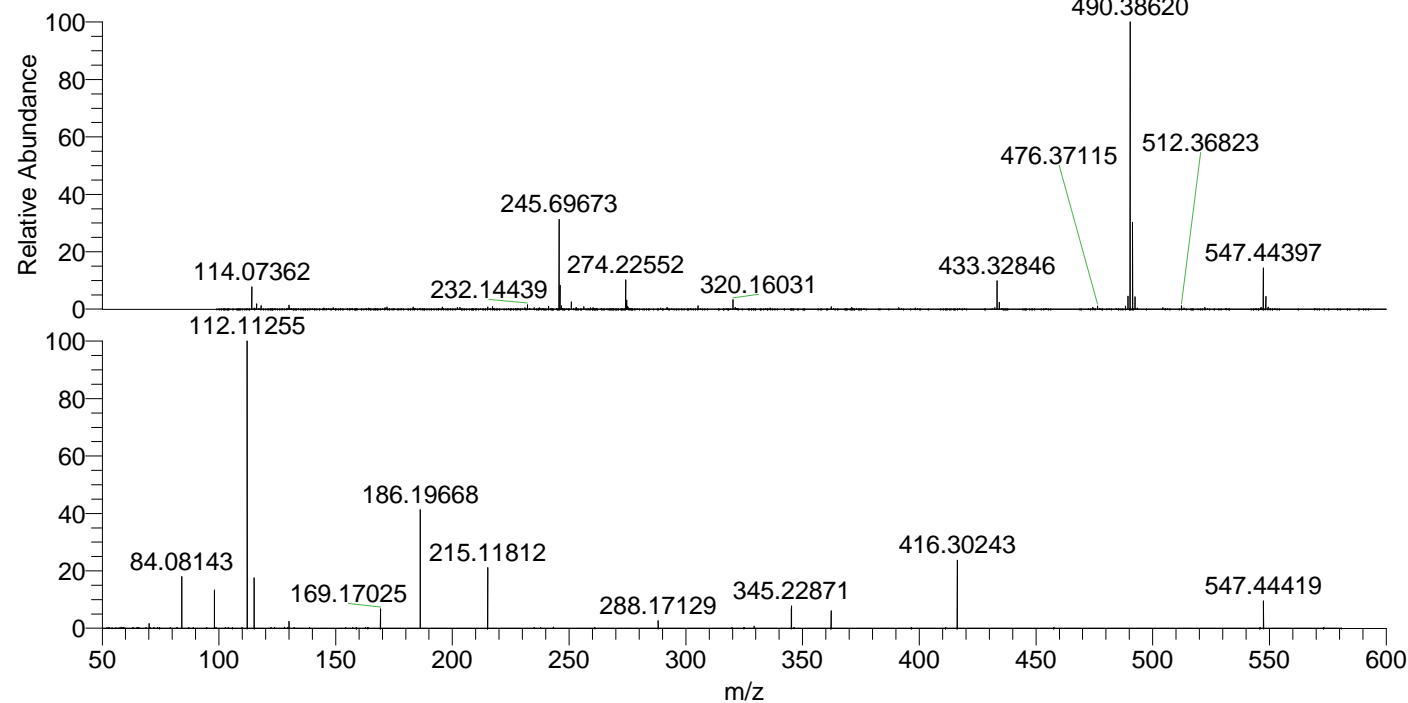
NL: 4.77E5
 Base Peak m/z= 50.00000-1500.00000 F:
 FTMS + p ESI d Full ms2
 547.44@hcd35.00 [50.00-575.00] MS
 Apotteri

Apotteri#3785-3808 RT: 9.41-9.46 AV: 5

F: FTMS + p ESI d Full ms2 547.44 ...

m/z= 50.00000-1000.00000

m/z	Intensity	Relative
70.06604	5458.7	1.60
84.08143	61705.9	18.06
98.09698	46643.4	13.65
112.11255	341605.8	100.00
115.12339	60382.7	17.68
130.06541	8310.7	2.43
169.17025	23278.8	6.81
186.19668	140526.0	41.14
215.11812	72551.9	21.24
288.17129	8916.0	2.61
329.23345	2545.7	0.75
345.22871	26324.0	7.71
362.25556	21093.5	6.17
416.30243	81185.1	23.77
547.44419	32532.2	9.52



NL: 1.62E7
 Apotteri#3787 RT: 9.41
 AV: 1 T: FTMS + p ESI
 Full ms [100.00-1500.00]

NL: 3.40E5
 Apotteri#3778-3814 RT:
 9.41-9.46 AV: 5 F: FTMS
 + p ESI d Full ms2
 547.44@hcd35.00
 [50.00-575.00]