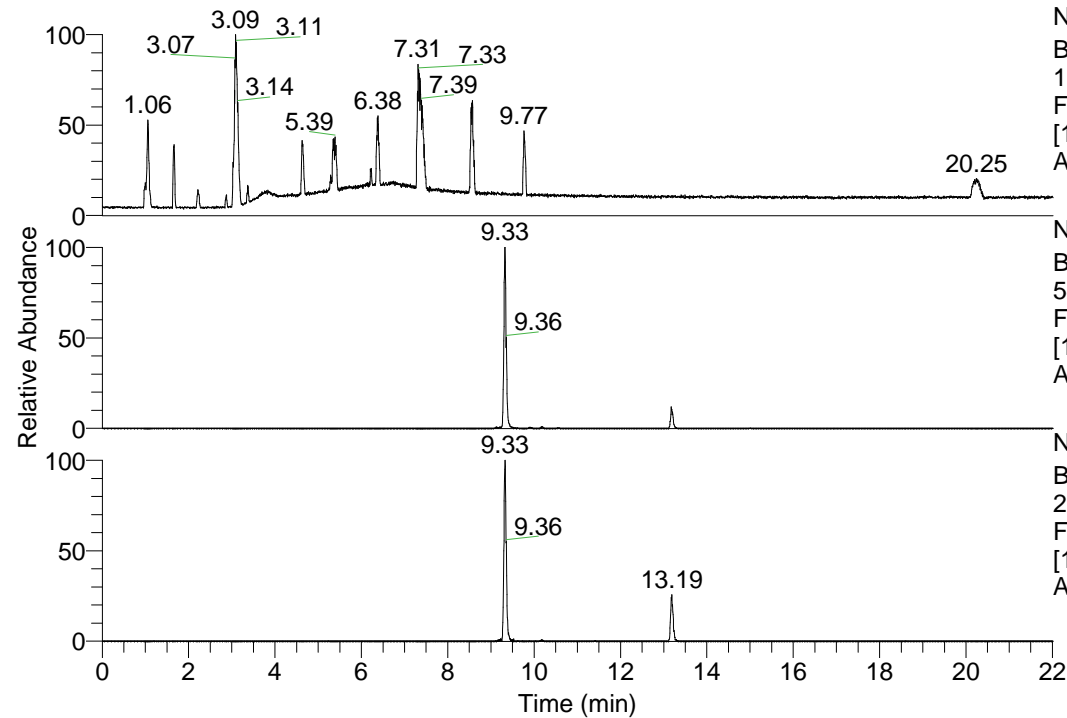


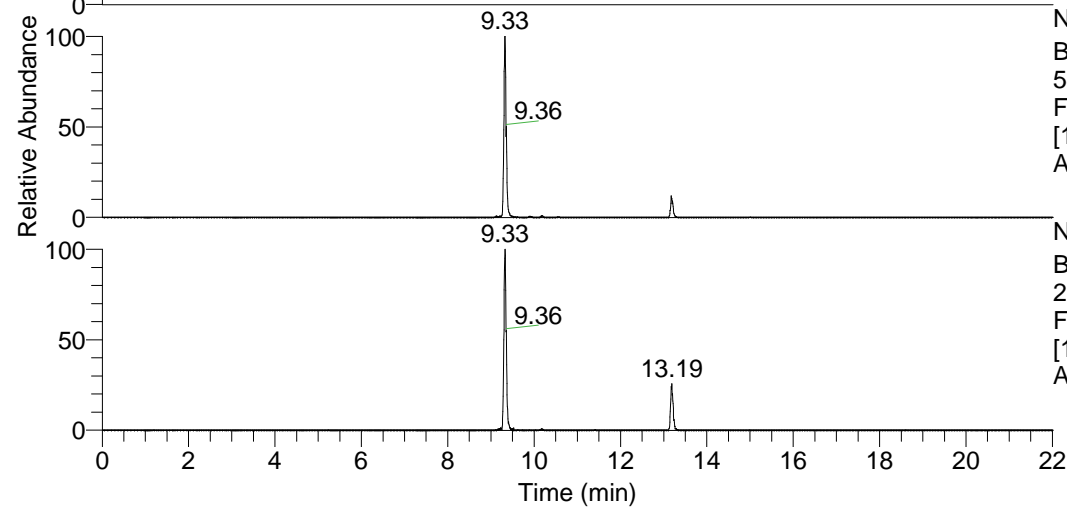
RT: 0.00 - 22.01



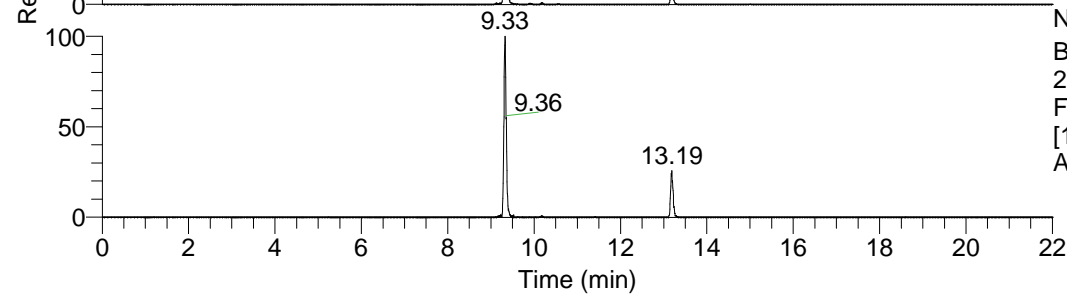
NL: 1.69E8
 Base Peak m/z=
 100.00000-1500.00000 F:
 FTMS + p ESI Full ms
 [100.00-1500.00] MS
 Apotteri_HDX

Apotteri_HDX#1514 RT: 9.33
 T: FTMS + p ESI Full ms [100.00-1500.00]
 m/z= 540.00000-541.00000

m/z	Intensity	Relative	Delta (ppm)	Composition
540.44971	4738997.5	100.00	-1.05	C ₂₈ H ₄₆ ² H ₆ O ₃ N ₇
			1.81	C ₂₈ H ₄₄ ² H ₇ O ₃ N ₇
			-3.92	C ₂₈ H ₄₈ ² H ₅ O ₃ N ₇
			4.68	C ₂₈ H ₄₂ ² H ₈ O ₃ N ₇

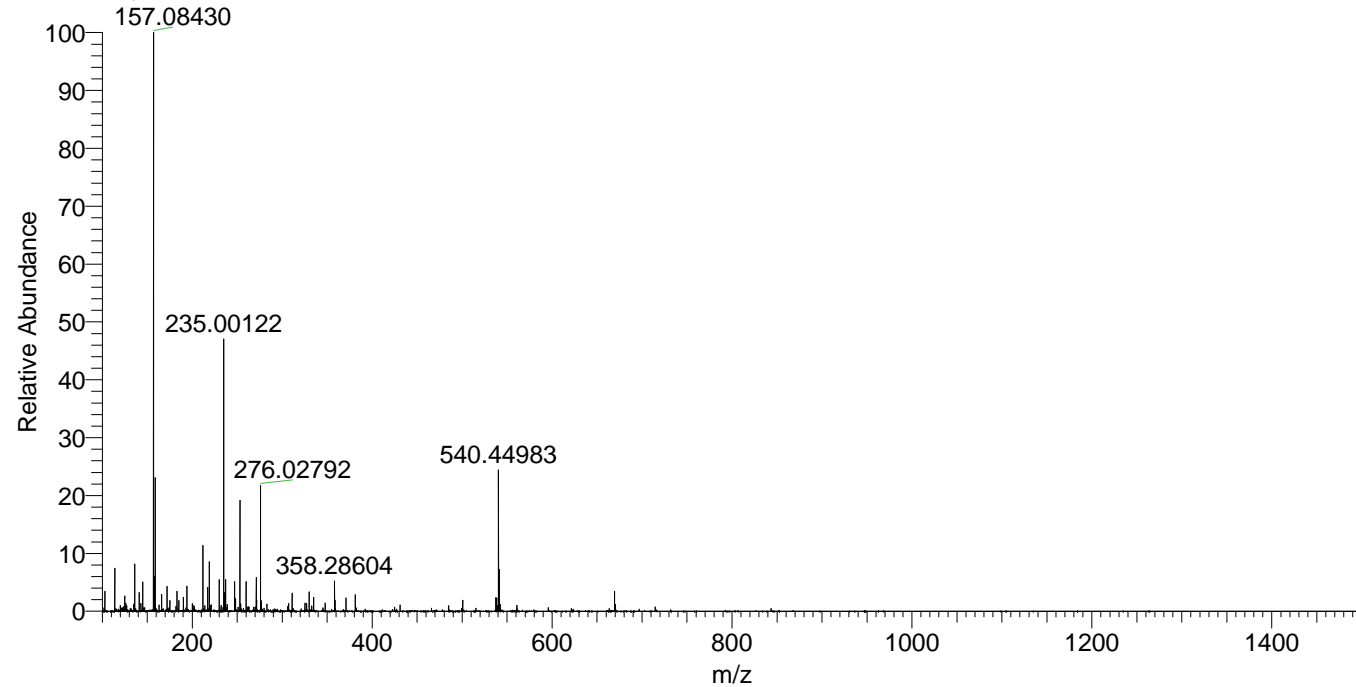


NL: 5.16E6
 Base Peak m/z=
 540.44503-540.45043 F:
 FTMS + p ESI Full ms
 [100.00-1500.00] MS
 Apotteri_HDX



NL: 1.23E6
 Base Peak m/z=
 271.22956-271.23228 F:
 FTMS + p ESI Full ms
 [100.00-1500.00] MS
 Apotteri_HDX

Apotteri_HDX #1513 RT: 9.33 AV: 1 NL: 2.10E7
 T: FTMS + p ESI Full ms [100.00-1500.00]



Apotteri_HDX #1514 RT: 9.33 AV: 1 NL: 4.73E6
 T: FTMS + p ESI Full ms [100.00-1500.00]

