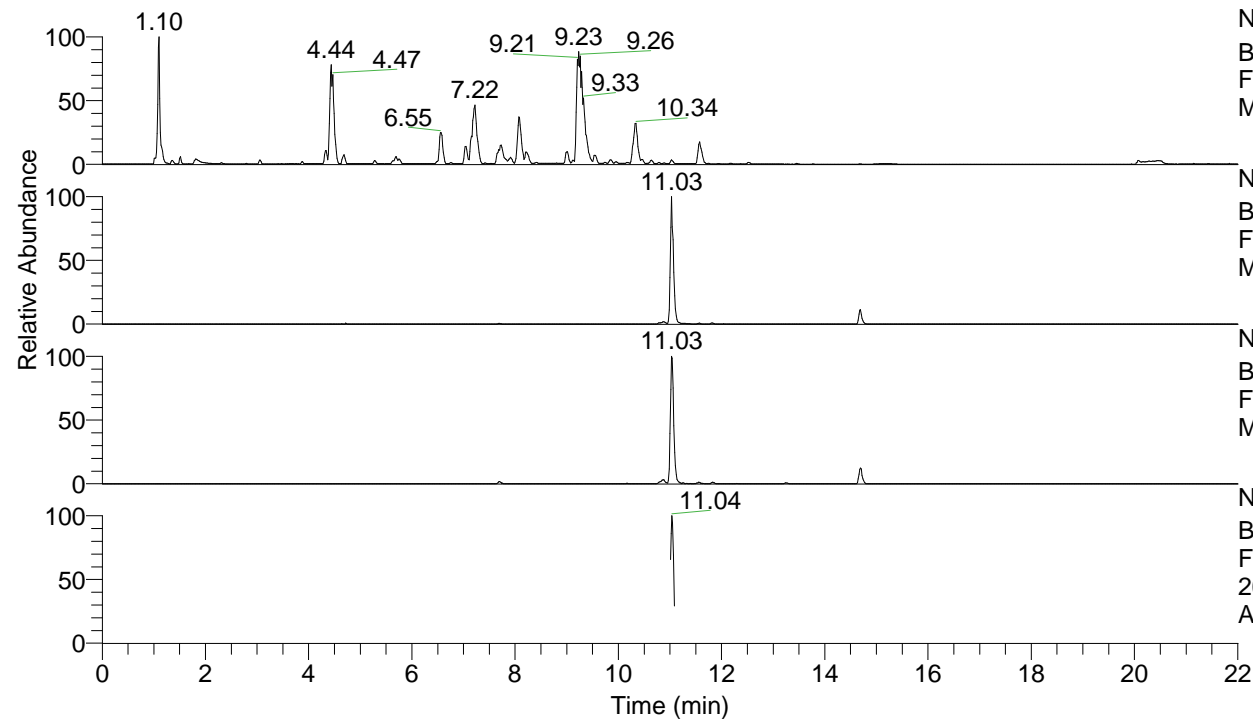


RT: 0.00 - 22.00



NL: 1.25E8
 Base Peak m/z= 100.00000-1500.00000 F:
 FTMS + p ESI Full ms [100.00-1500.00]
 MS Apotteri

NL: 4.61E6
 Base Peak m/z= 532.39485-532.40017 F:
 FTMS + p ESI Full ms [100.00-1500.00]
 MS Apotteri

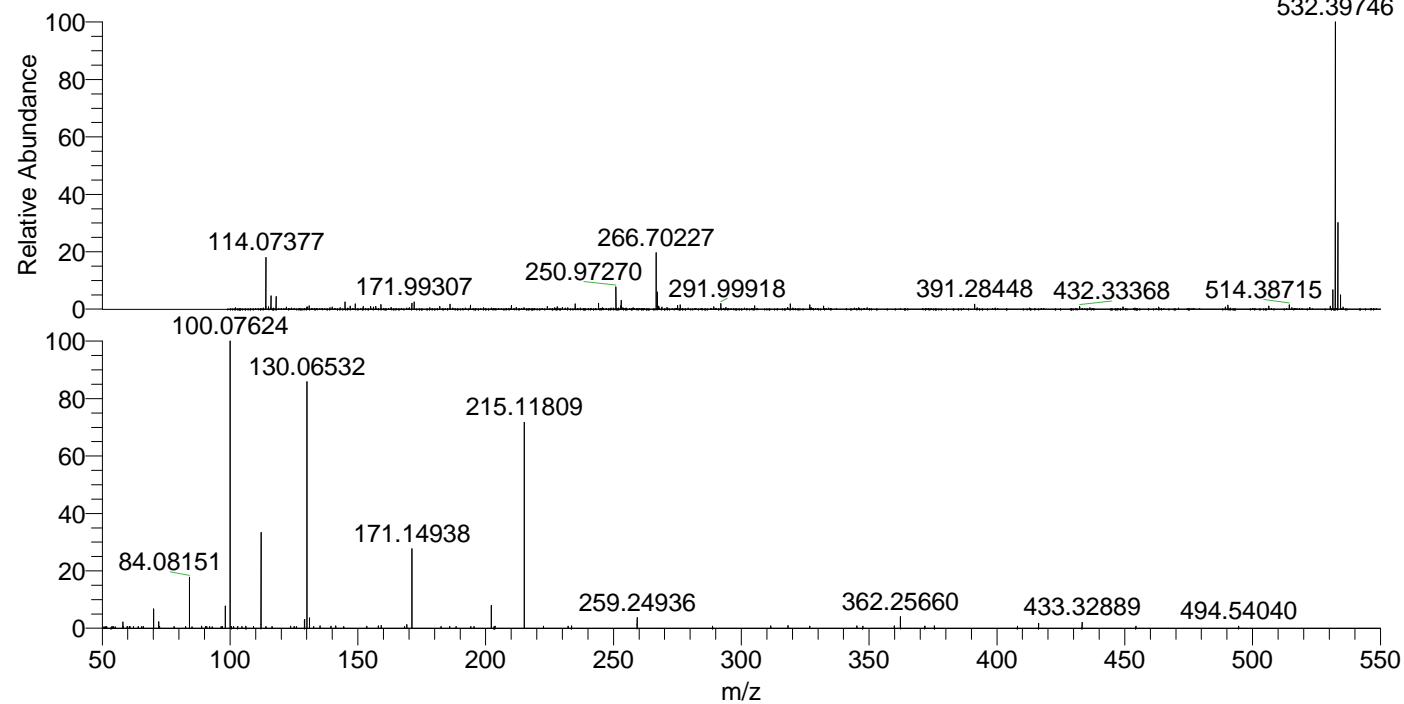
NL: 8.97E5
 Base Peak m/z= 266.70134-266.70400 F:
 FTMS + p ESI Full ms [100.00-1500.00]
 MS Apotteri

NL: 1.17E5
 Base Peak m/z= 50.00000-1500.00000 F:
 FTMS + p ESI d Full ms2
 266.70@hcd35.00 [50.00-560.00] MS
 Apotteri

Apotteri#4427-4449 RT: 11.01-11.07

F: FTMS + p ESI d Full ms2 266.70 ...
 m/z= 50.00000-1000.00000

m/z	Intensity	Relative
58.06599	1961.3	2.15
70.06587	6202.2	6.80
72.04520	2120.3	2.33
72.08139	1514.8	1.66
84.08151	16512.7	18.11
88.87009	618.4	0.68
88.88437	661.4	0.73
98.09704	7143.7	7.83
100.07624	91193.0	100.00
100.58661	585.9	0.64
101.41097	621.5	0.68
106.21973	643.9	0.71
109.22196	591.8	0.65
112.11252	30594.0	33.55
123.68926	638.8	0.70
129.13915	2787.1	3.06
130.06532	80665.5	88.46
131.11812	3297.4	3.62
132.68656	588.4	0.65
135.20179	730.8	0.80
139.48621	617.4	0.68
141.34706	735.8	0.81
153.45383	689.1	0.76
158.01685	793.6	0.87
159.09238	862.8	0.95
168.22636	597.0	0.65
169.13394	1131.1	1.24
171.14938	25442.8	27.90
182.54107	606.1	0.66
185.95438	598.7	0.66
188.44460	609.7	0.67
195.48503	602.2	0.66
202.19187	7337.3	8.05
203.27604	607.4	0.67
203.65612	626.1	0.69
215.11809	66067.6	72.45
222.60281	644.2	0.71
232.21658	704.5	0.77
233.57901	739.7	0.81
259.24936	3538.3	3.88
288.78167	615.1	0.67
311.54998	751.0	0.82
318.28529	827.9	0.91
326.76362	658.1	0.72
345.22856	712.3	0.78
347.53631	650.1	0.71
359.86294	806.2	0.88
362.25660	3681.6	4.04
371.81000	689.4	0.76
375.55240	737.3	0.81
408.03517	692.8	0.76
416.30000	1607.1	1.76
433.32889	1889.2	2.07
454.37130	686.8	0.75
494.54040	674.9	0.74



NL: 4.49E6
 Apotteri#4435 RT: 11.03
 AV: 1 T: FTMS + p ESI
 Full ms [100.00-1500.00]

NL: 9.12E4
 Apotteri#4421-4456 RT:
 11.01-11.07 AV: 5 F:
 FTMS + p ESI d Full ms2
 266.70@hcd35.00
 [50.00-560.00]