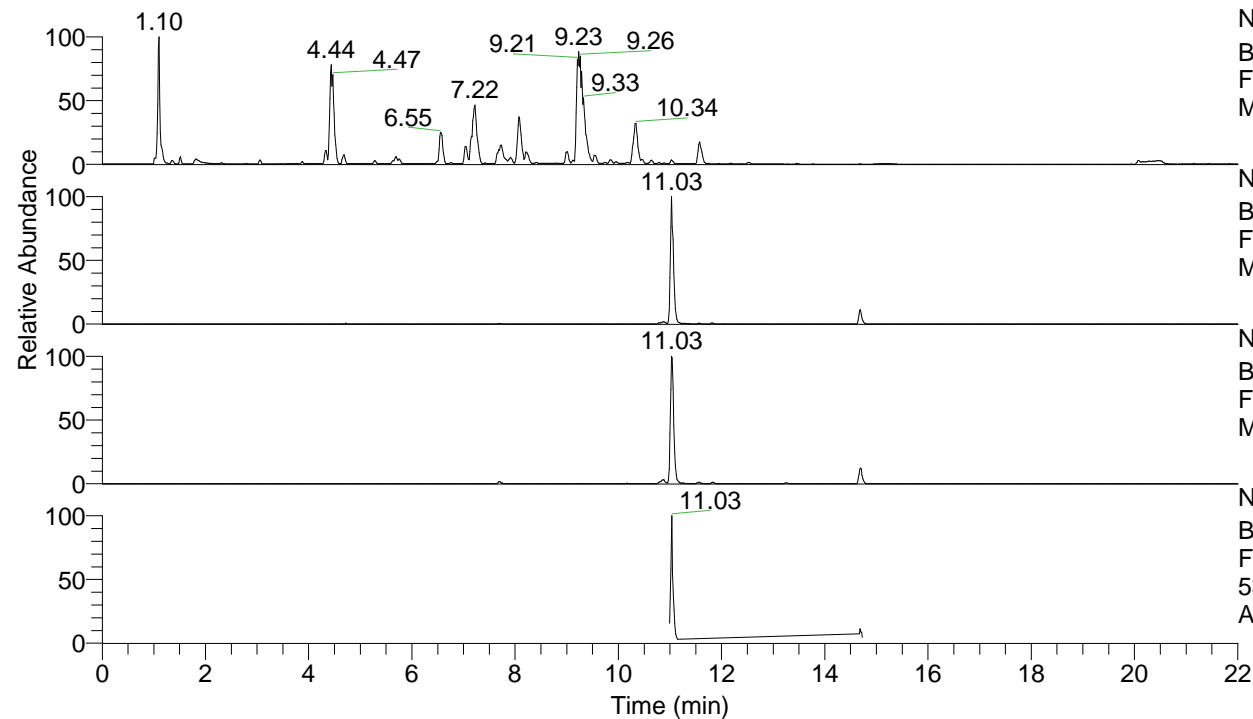


RT: 0.00 - 22.00



NL: 1.25E8
 Base Peak m/z= 100.00000-1500.00000 F:
 FTMS + p ESI Full ms [100.00-1500.00]
 MS Apotteri

NL: 4.61E6
 Base Peak m/z= 532.39485-532.40017 F:
 FTMS + p ESI Full ms [100.00-1500.00]
 MS Apotteri

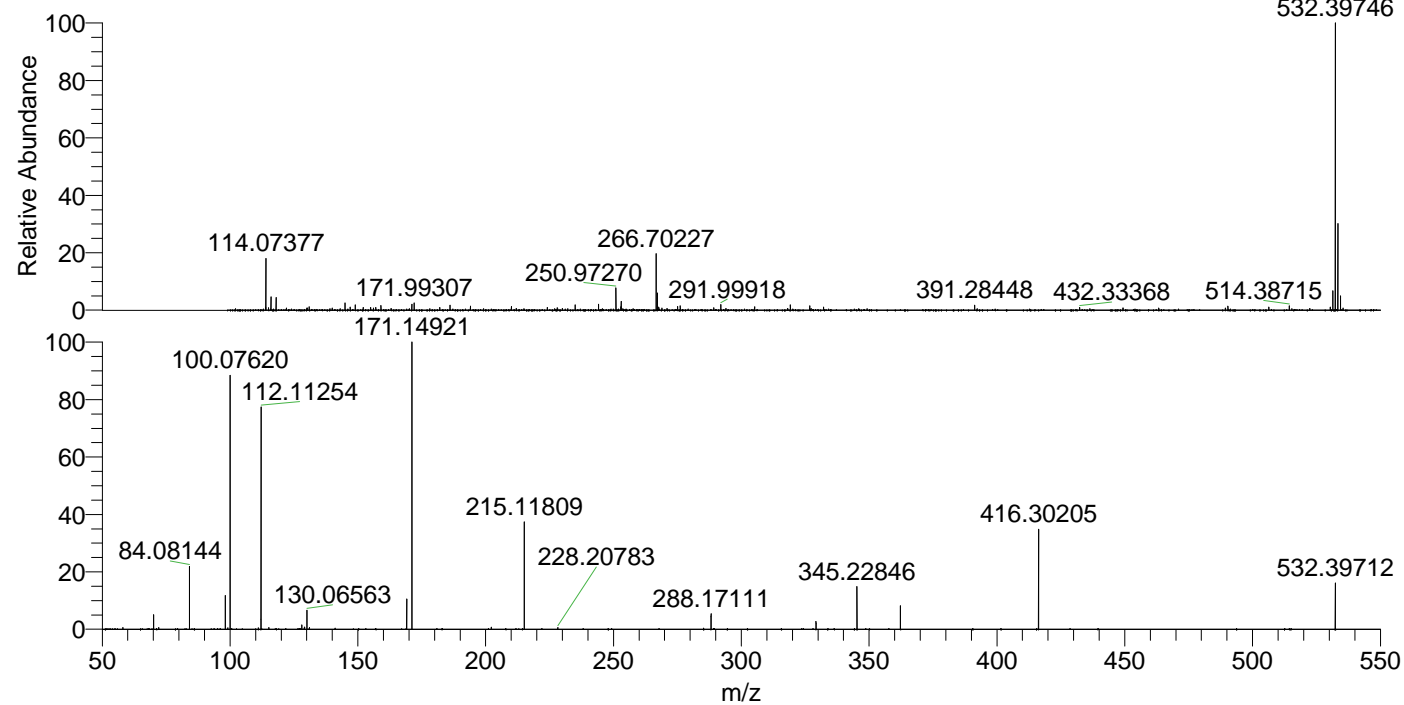
NL: 8.97E5
 Base Peak m/z= 266.70134-266.70400 F:
 FTMS + p ESI Full ms [100.00-1500.00]
 MS Apotteri

NL: 7.07E5
 Base Peak m/z= 50.00000-1500.00000 F:
 FTMS + p ESI d Full ms2
 532.40@hcd35.00 [50.00-560.00] MS
 Apotteri

Apotteri#4425-4454 RT: 11.01-11.08

F: FTMS + p ESI d Full ms2 532.40 ...
 m/z= 50.00000-1000.00000

m/z	Intensity	Relative
58.06607	2069.1	0.60
70.06589	17598.5	5.14
72.04512	1922.6	0.56
72.08158	2057.7	0.60
84.08144	75755.3	22.13
98.09708	39650.8	11.58
100.07620	299743.2	87.57
111.10477	1801.5	0.53
112.11254	260725.7	76.17
115.12357	2197.9	0.64
128.10735	5229.7	1.53
129.13900	2622.8	0.77
130.06563	22542.1	6.59
131.11815	2230.4	0.65
169.13379	4935.2	1.44
169.17003	36154.1	10.56
171.14921	342286.0	100.00
202.19169	2446.1	0.71
215.11809	125864.4	36.77
228.20783	2247.1	0.66
288.17111	18246.4	5.33
329.23392	9492.6	2.77
345.22846	50261.8	14.68
362.25567	27753.4	8.11
416.30205	117374.0	34.29
532.39712	54633.0	15.96



NL: 4.49E6
 Apotteri#4435 RT: 11.03
 AV: 1 T: FTMS + p ESI
 Full ms [100.00-1500.00]

NL: 3.37E5
 Apotteri#4421-4456 RT:
 11.01-11.08 AV: 6 F:
 FTMS + p ESI d Full ms2
 532.40@hcd35.00
 [50.00-560.00]