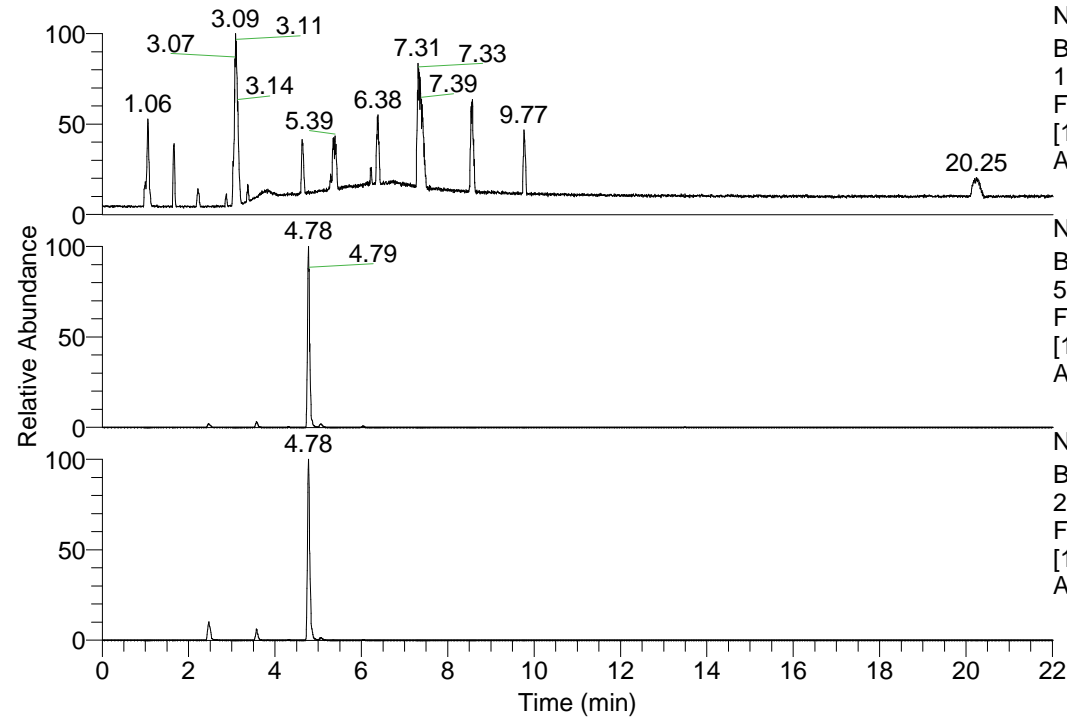


RT: 0.00 - 22.01



NL: 1.69E8
 Base Peak m/z=
 100.00000-1500.00000 F:
 FTMS + p ESI Full ms
 [100.00-1500.00] MS
 Apotteri_HDX

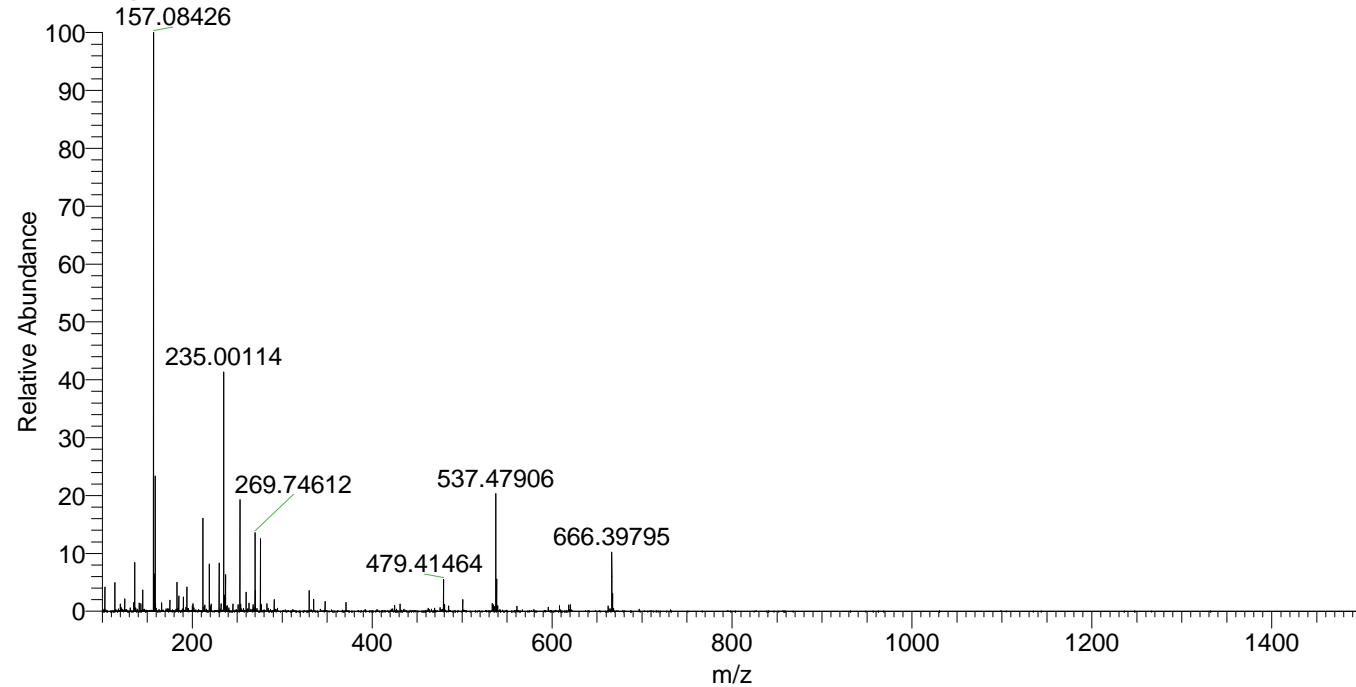
Apotteri_HDX#751 RT: 4.78
 T: FTMS + p ESI Full ms [100.00-1500.00]
 m/z= 537.00000-538.00000

m/z	Intensity	Relative	Delta (ppm)	Composition
537.47906	4416266.0	100.00	-1.13	C ₂₆ H ₄₅ ² H ₉ O ₄ N ₇
			1.75	C ₂₆ H ₄₃ ² H ₁₀ O ₄ N ₇
			-4.01	C ₂₆ H ₄₇ ² H ₈ O ₄ N ₇
			4.63	C ₂₆ H ₄₁ ² H ₁₁ O ₄ N ₇

NL: 4.42E6
 Base Peak m/z=
 537.47443-537.47981 F:
 FTMS + p ESI Full ms
 [100.00-1500.00] MS
 Apotteri_HDX

NL: 2.95E6
 Base Peak m/z=
 269.74426-269.74696 F:
 FTMS + p ESI Full ms
 [100.00-1500.00] MS
 Apotteri_HDX

Apotteri_HDX #751 RT: 4.78 AV: 1 NL: 2.17E7
 T: FTMS + p ESI Full ms [100.00-1500.00]



Apotteri_HDX #751 RT: 4.78 AV: 1 NL: 4.41E6
 T: FTMS + p ESI Full ms [100.00-1500.00]

