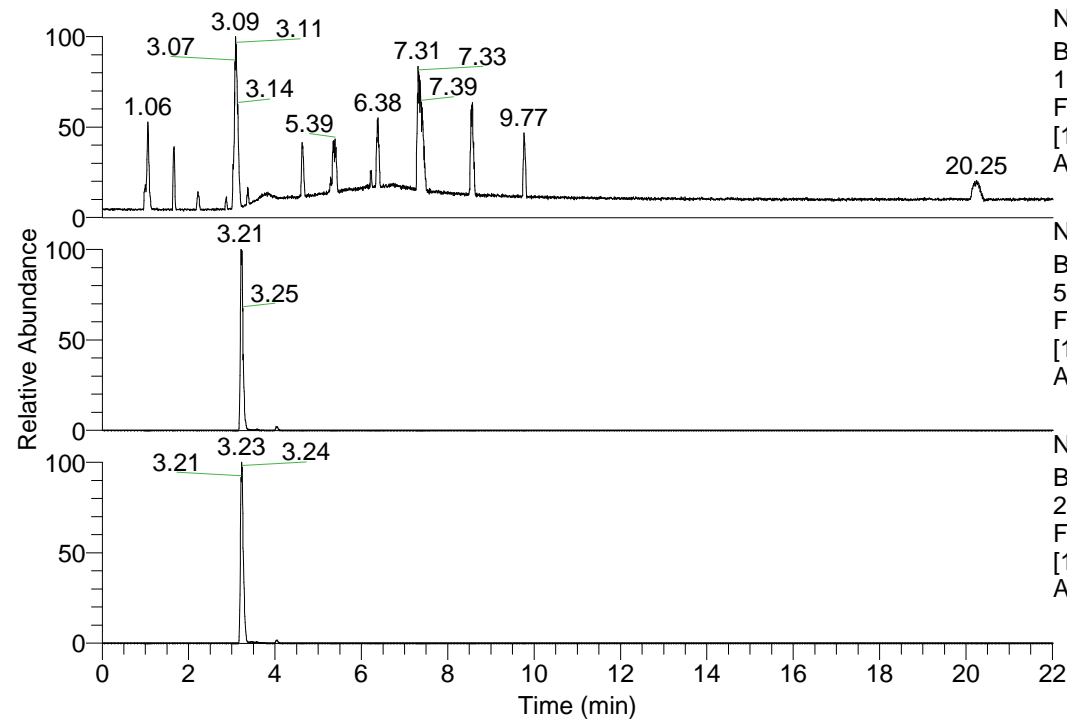


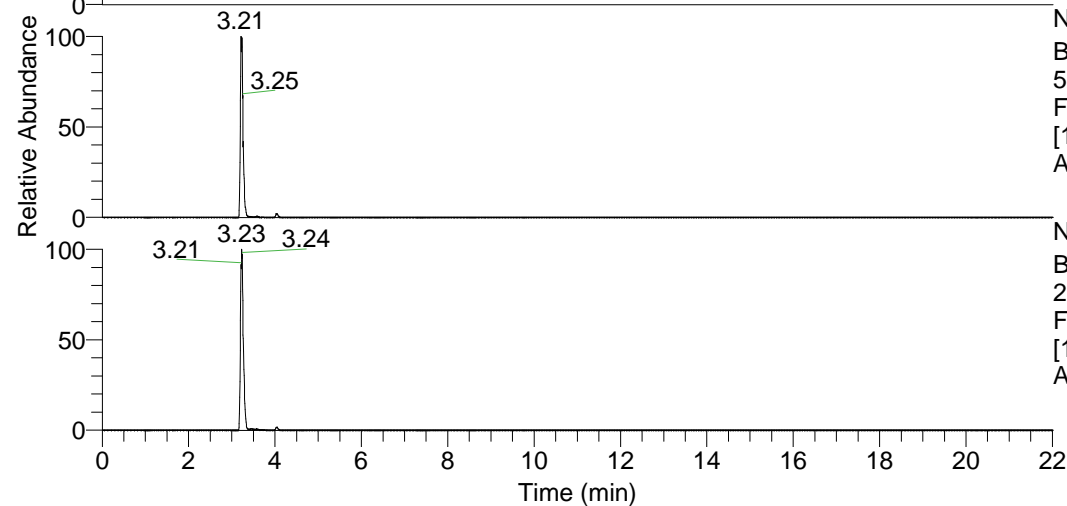
RT: 0.00 - 22.01



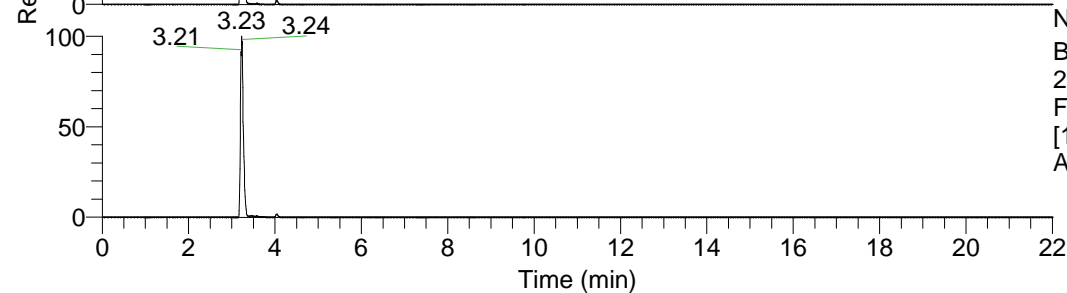
NL: 1.69E8  
 Base Peak m/z=  
 100.00000-1500.00000 F:  
 FTMS + p ESI Full ms  
 [100.00-1500.00] MS  
 Apotteri\_HDX

Apotteri\_HDX#495 RT: 3.21  
 T: FTMS + p ESI Full ms [100.00-1500.00]  
 m/z= 520.00000-521.00000

m/z	Intensity	Relative	Delta (ppm)	Composition
520.47797	8088303.5	100.00	-0.99	C <sub>26</sub> H <sub>46</sub> <sup>2</sup> H <sub>8</sub> O <sub>3</sub> N <sub>7</sub>
			1.99	C <sub>26</sub> H <sub>44</sub> <sup>2</sup> H <sub>9</sub> O <sub>3</sub> N <sub>7</sub>
			-3.96	C <sub>26</sub> H <sub>48</sub> <sup>2</sup> H <sub>7</sub> O <sub>3</sub> N <sub>7</sub>
			4.96	C <sub>26</sub> H <sub>42</sub> <sup>2</sup> H <sub>10</sub> O <sub>3</sub> N <sub>7</sub>

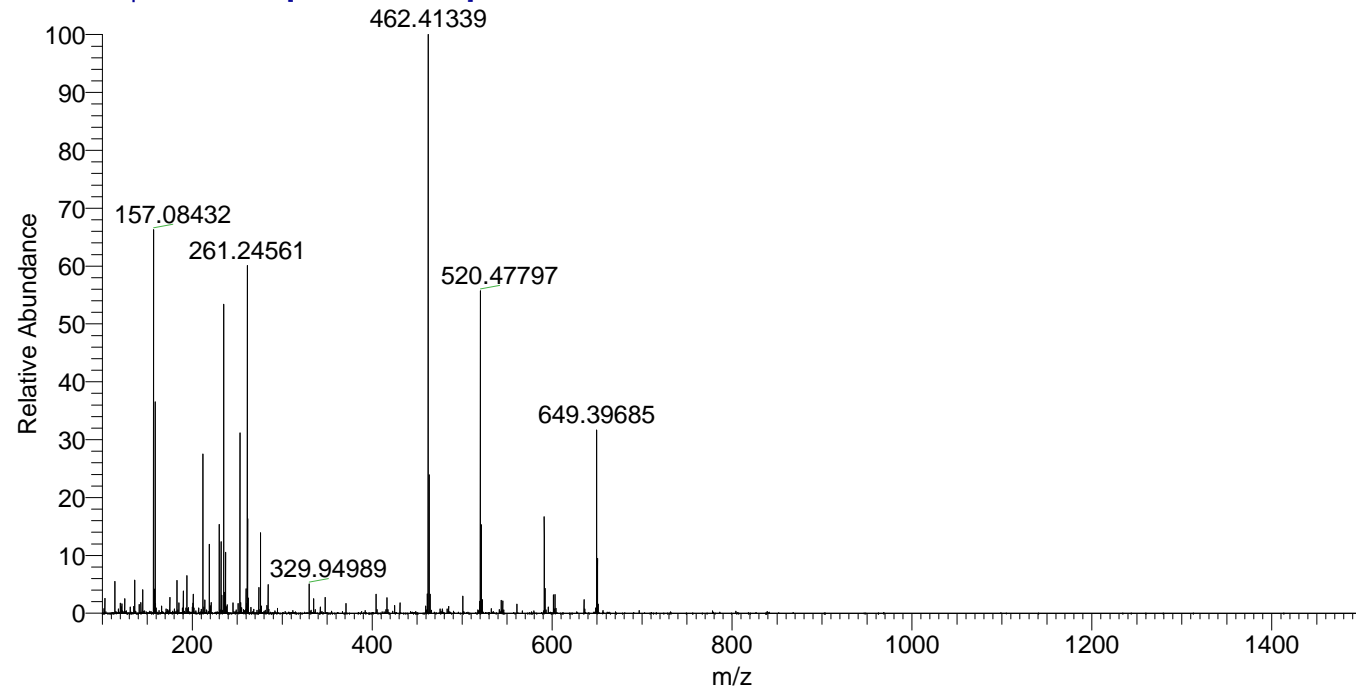


NL: 1.04E7  
 Base Peak m/z=  
 520.47333-520.47853 F:  
 FTMS + p ESI Full ms  
 [100.00-1500.00] MS  
 Apotteri\_HDX



NL: 1.15E7  
 Base Peak m/z=  
 261.24371-261.24633 F:  
 FTMS + p ESI Full ms  
 [100.00-1500.00] MS  
 Apotteri\_HDX

Apotteri\_HDX #495 RT: 3.21 AV: 1 NL: 1.43E7  
 T: FTMS + p ESI Full ms [100.00-1500.00]



Apotteri\_HDX #495 RT: 3.21 AV: 1 NL: 8.00E6  
 T: FTMS + p ESI Full ms [100.00-1500.00]

