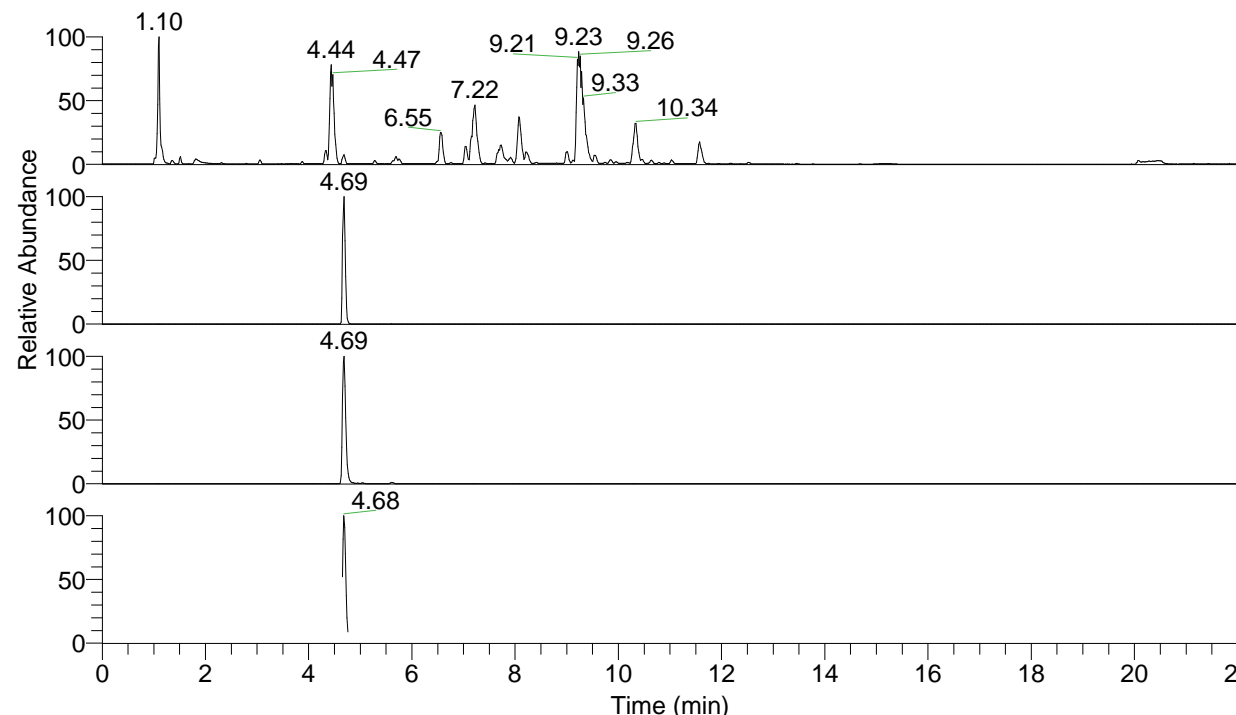


RT: 0.00 - 22.00



NL: 1.25E8  
 Base Peak m/z= 100.00000-1500.00000 F:  
 FTMS + p ESI Full ms [100.00-1500.00]  
 MS Apotteri

NL: 9.52E6  
 Base Peak m/z= 510.41061-510.41571 F:  
 FTMS + p ESI Full ms [100.00-1500.00]  
 MS Apotteri

NL: 4.10E6  
 Base Peak m/z= 255.70921-255.71177 F:  
 FTMS + p ESI Full ms [100.00-1500.00]  
 MS Apotteri

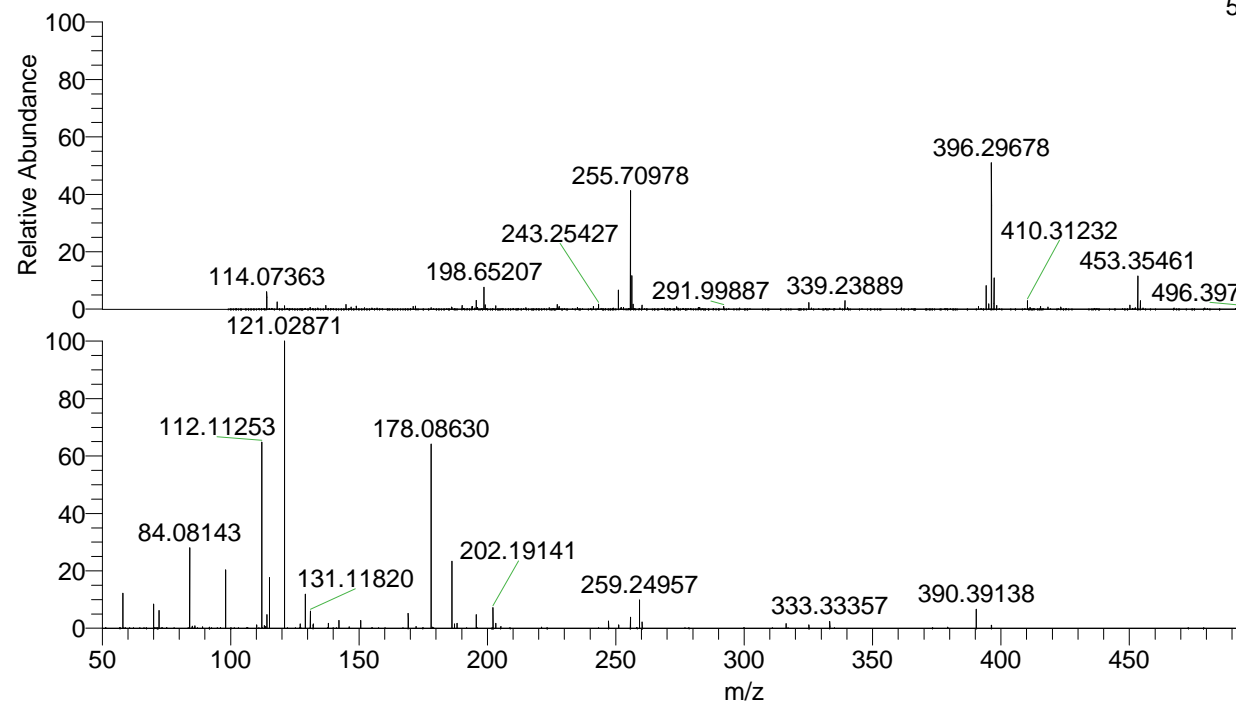
NL: 5.47E5  
 Base Peak m/z= 50.00000-1500.00000 F:  
 FTMS + p ESI d Full ms2  
 255.71@hcd35.00 [50.00-540.00] MS  
 Apotteri

Apotteri#1871-1900 RT: 4.65-4.73 AV: 6

F: FTMS + p ESI d Full ms2 255.71 ...

m/z= 50.00000-1000.00000

m/z	Intensity	Relative
58.06603	43961.9	12.05
70.06590	29823.9	8.17
72.08168	21698.9	5.95
84.08143	99820.9	27.35
85.07686	2664.0	0.73
86.06060	2884.1	0.79
89.10802	1844.1	0.51
98.09703	72145.8	19.77
110.09690	4152.0	1.14
112.11253	228188.0	62.52
113.10783	3390.7	0.93
113.61805	2090.4	0.57
114.09178	17085.1	4.68
115.12341	62414.7	17.10
121.02871	364955.3	100.00
127.12344	5417.6	1.48
129.13899	42438.8	11.63
131.11820	21102.7	5.78
132.14996	5565.3	1.52
138.05519	6194.4	1.70
142.14686	9787.8	2.68
150.66025	9791.6	2.68
169.17012	18724.2	5.13
172.18092	2199.2	0.60
178.08630	227448.9	62.32
186.19648	82272.6	22.54
187.18687	5570.9	1.53
188.17600	6199.8	1.70
195.69966	16540.1	4.53
202.19141	25383.6	6.96
203.22369	6142.6	1.68
205.20298	2031.2	0.56
247.19788	8712.7	2.39
251.13975	4082.1	1.12
255.71049	13717.1	3.76
259.24957	35202.7	9.65
260.28146	7743.7	2.12
316.30797	5746.6	1.57
325.22343	4069.7	1.12
333.33357	8837.4	2.42
390.39138	23264.7	6.37
396.29695	3752.8	1.03



NL: 9.50E6  
 Apotteri#1885 RT: 4.69  
 AV: 1 T: FTMS + p ESI  
 Full ms [100.00-1500.00]

NL: 3.52E5  
 Apotteri#1867-1901 RT:  
 4.65-4.73 AV: 6 F: FTMS  
 + p ESI d Full ms2  
 255.71@hcd35.00  
 [50.00-540.00]