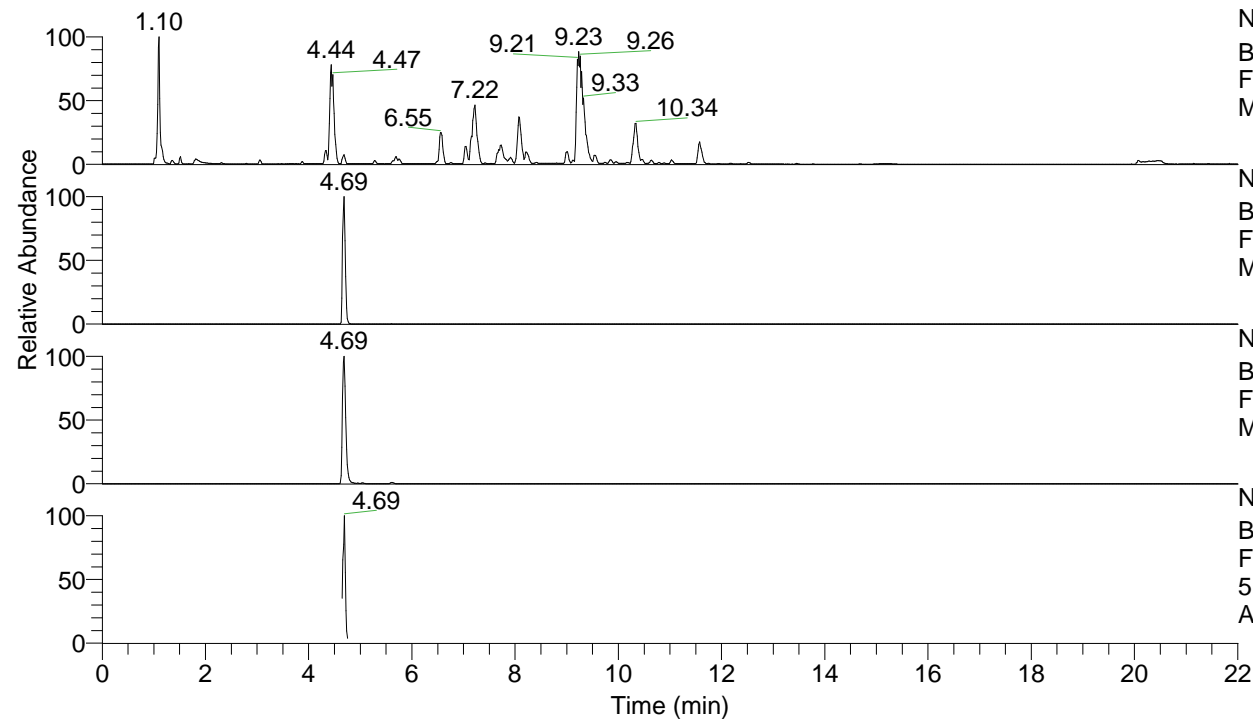


RT: 0.00 - 22.00



NL: 1.25E8
 Base Peak m/z= 100.00000-1500.00000 F:
 FTMS + p ESI Full ms [100.00-1500.00]
 MS Apotteri

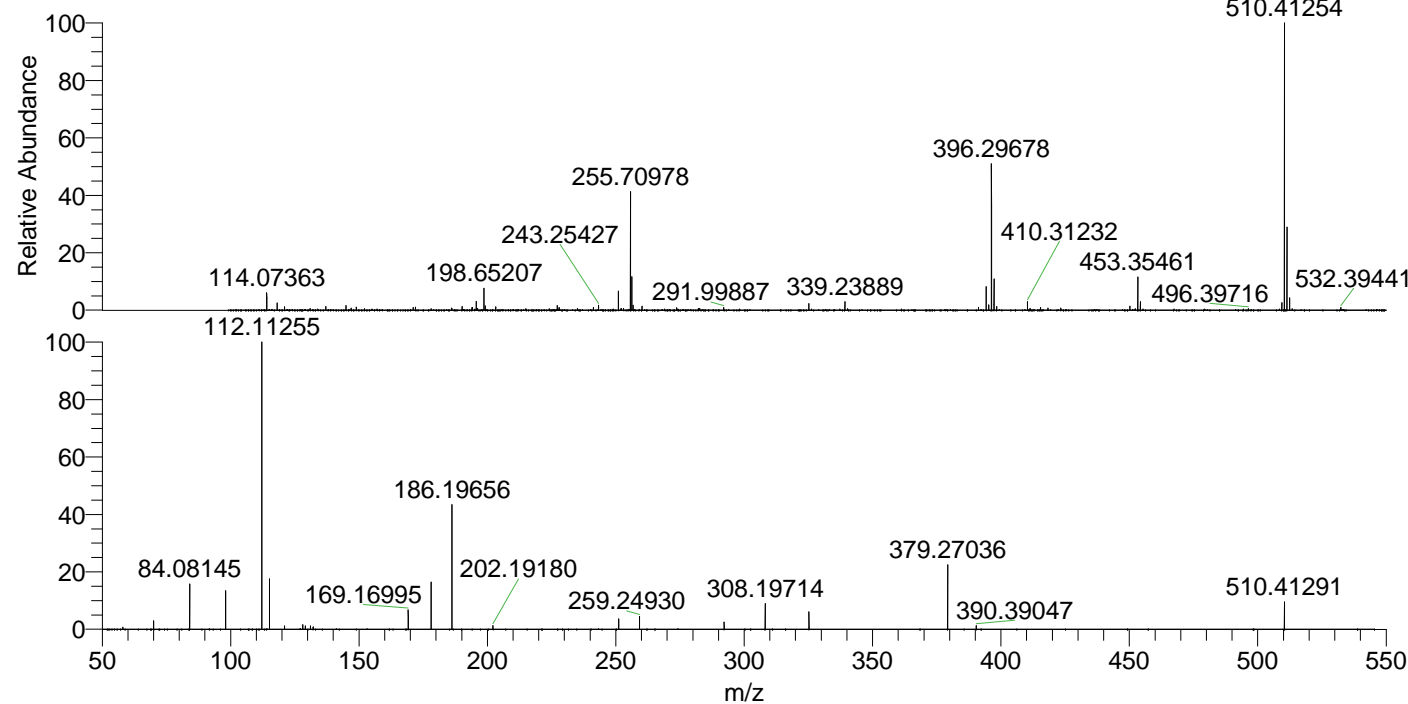
NL: 9.52E6
 Base Peak m/z= 510.41061-510.41571 F:
 FTMS + p ESI Full ms [100.00-1500.00]
 MS Apotteri

NL: 4.10E6
 Base Peak m/z= 255.70921-255.71177 F:
 FTMS + p ESI Full ms [100.00-1500.00]
 MS Apotteri

NL: 2.42E6
 Base Peak m/z= 50.00000-1500.00000 F:
 FTMS + p ESI d Full ms2
 510.41@hcd35.00 [50.00-540.00] MS
 Apotteri

Apotteri#1870-1898 RT: 4.65-4.72 AV: 6
 F: FTMS + p ESI d Full ms2 510.41@h ...
 m/z= 50.00000-1000.00000

| m/z | Intensity | Relative |
|-----------|-----------|----------|
| 58.06597 | 10065.2 | 0.74 |
| 70.06590 | 41226.6 | 3.01 |
| 84.08145 | 223399.1 | 16.33 |
| 98.09702 | 183421.2 | 13.41 |
| 112.11255 | 1367757.0 | 100.00 |
| 115.12340 | 240627.0 | 17.59 |
| 121.02888 | 16626.2 | 1.22 |
| 128.10730 | 22616.2 | 1.65 |
| 129.13884 | 15731.8 | 1.15 |
| 131.11809 | 15692.3 | 1.15 |
| 132.14985 | 11888.0 | 0.87 |
| 169.16995 | 94830.3 | 6.93 |
| 178.08633 | 226369.5 | 16.55 |
| 186.19656 | 596184.5 | 43.59 |
| 202.19180 | 17831.1 | 1.30 |
| 251.13900 | 50038.3 | 3.66 |
| 259.24930 | 62787.2 | 4.59 |
| 292.20174 | 35883.9 | 2.62 |
| 308.19714 | 124242.3 | 9.08 |
| 325.22357 | 85514.9 | 6.25 |
| 379.27036 | 306458.1 | 22.41 |
| 390.39047 | 16813.8 | 1.23 |
| 510.41291 | 131564.0 | 9.62 |



NL: 9.50E6
 Apotteri#1885 RT: 4.69
 AV: 1 T: FTMS + p ESI
 Full ms [100.00-1500.00]

NL: 1.37E6
 Apotteri#1868-1898 RT:
 4.65-4.72 AV: 6 F: FTMS
 + p ESI d Full ms2
 510.41@hcd35.00
 [50.00-540.00]