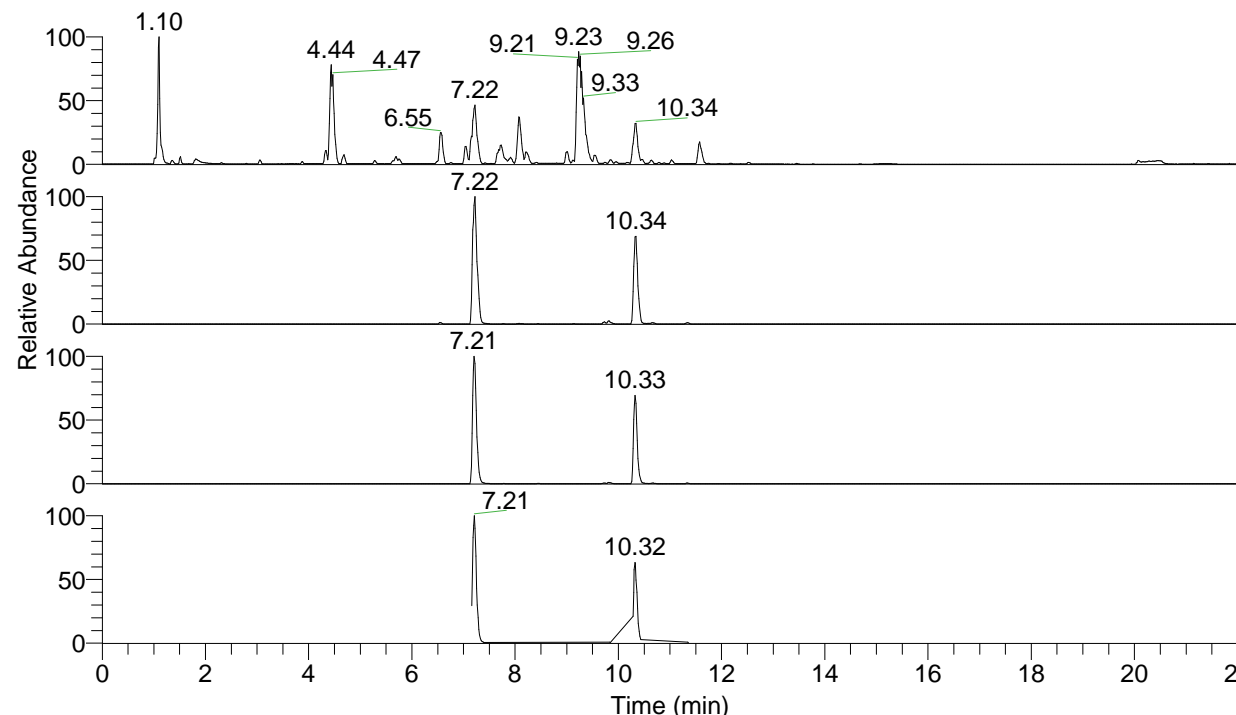


RT: 0.00 - 22.00



NL: 1.25E8
 Base Peak m/z= 100.00000-1500.00000 F:
 FTMS + p ESI Full ms [100.00-1500.00]
 MS Apotteri

NL: 5.84E7
 Base Peak m/z= 506.37933-506.38439 F:
 FTMS + p ESI Full ms [100.00-1500.00]
 MS Apotteri

NL: 3.34E7
 Base Peak m/z= 253.69357-253.69611 F:
 FTMS + p ESI Full ms [100.00-1500.00]
 MS Apotteri

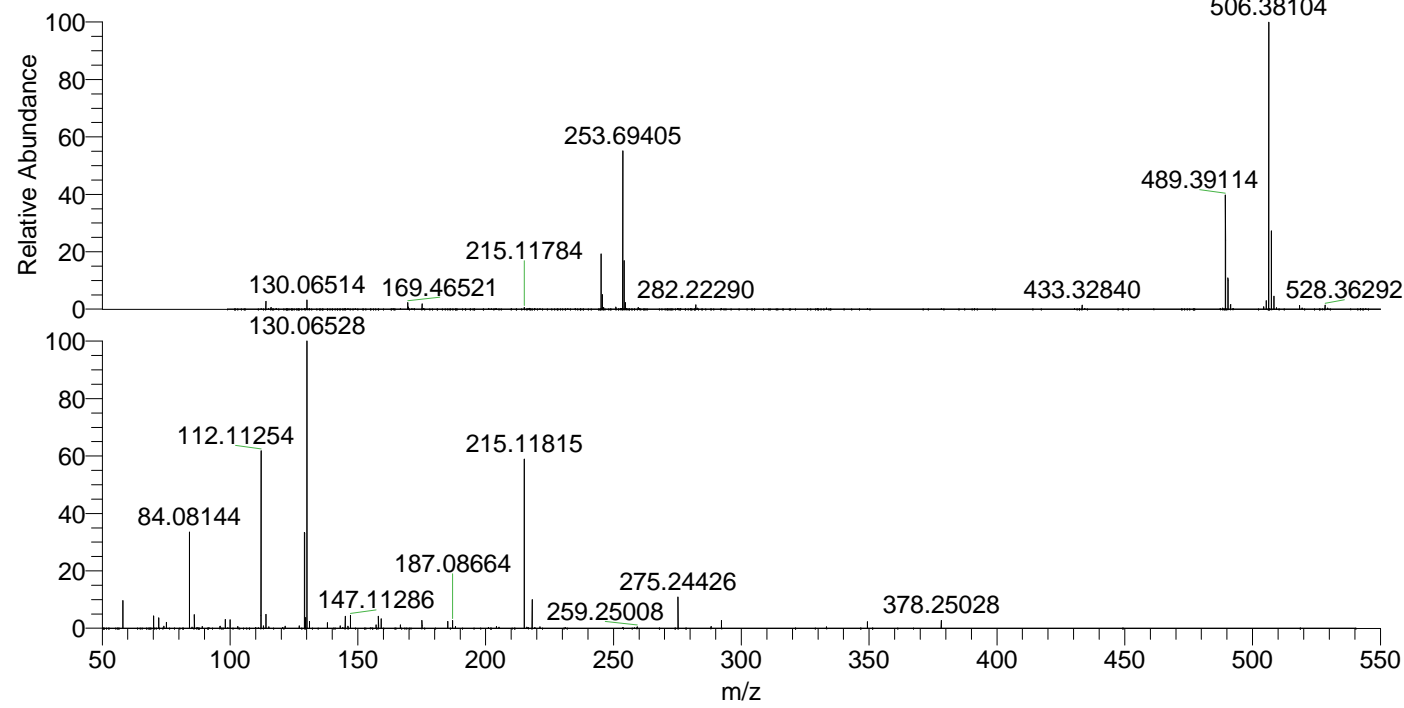
NL: 5.90E6
 Base Peak m/z= 50.00000-1500.00000 F:
 FTMS + p ESI d Full ms2
 253.69@hcd35.00 [50.00-535.00] MS
 Apotteri

Apotteri#4133-4167 RT: 10.28-10.36 AV: 7

F: FTMS + p ESI d Full ms2 253.69@h ...

m/z= 50.00000-1000.00000

m/z	Intensity	Relative
58.06600	252065.2	9.58
70.06589	110837.1	4.21
72.08162	93425.5	3.55
74.06072	18550.4	0.71
75.09242	51846.5	1.97
84.08144	866361.4	32.93
86.06076	125974.7	4.79
89.10792	14923.9	0.57
96.08140	18742.6	0.71
98.09689	82448.2	3.13
100.07626	74831.8	2.84
103.08712	15829.0	0.60
112.11254	1591016.8	60.47
113.10795	21329.1	0.81
114.09165	125890.2	4.78
121.61534	18120.7	0.69
127.12311	21233.4	0.81
129.13883	889709.1	33.82
129.61266	95930.8	3.65
130.06528	2631049.8	100.00
131.06884	15366.3	0.58
131.11805	60832.6	2.31
138.12571	50310.5	1.91
143.11820	22678.6	0.86
145.13377	107600.9	4.09
146.05997	19435.3	0.74
147.11286	114660.6	4.36
157.13383	31548.8	1.20
158.06006	109109.7	4.15
159.09190	83114.6	3.16
166.65484	29763.6	1.13
175.06311	70831.6	2.69
175.16779	25179.6	0.96
185.16496	60432.4	2.30
187.08664	70985.7	2.70
188.17612	16320.2	0.62
204.17073	17255.7	0.66
215.11815	1522165.6	57.85
218.18628	256443.2	9.75
259.25008	14347.7	0.55
275.24426	280122.5	10.65
288.17048	15193.9	0.58
292.27066	68859.6	2.62
349.32816	59040.9	2.24
378.25028	70537.2	2.68



NL: 3.99E7
 Apotteri#4153 RT: 10.33
 AV: 1 T: FTMS + p ESI
 Full ms [100.00-1500.00]

NL: 2.56E6
 Apotteri#4133-4171 RT:
 10.28-10.36 AV: 7 F:
 FTMS + p ESI d Full ms2
 253.69@hcd35.00
 [50.00-535.00]