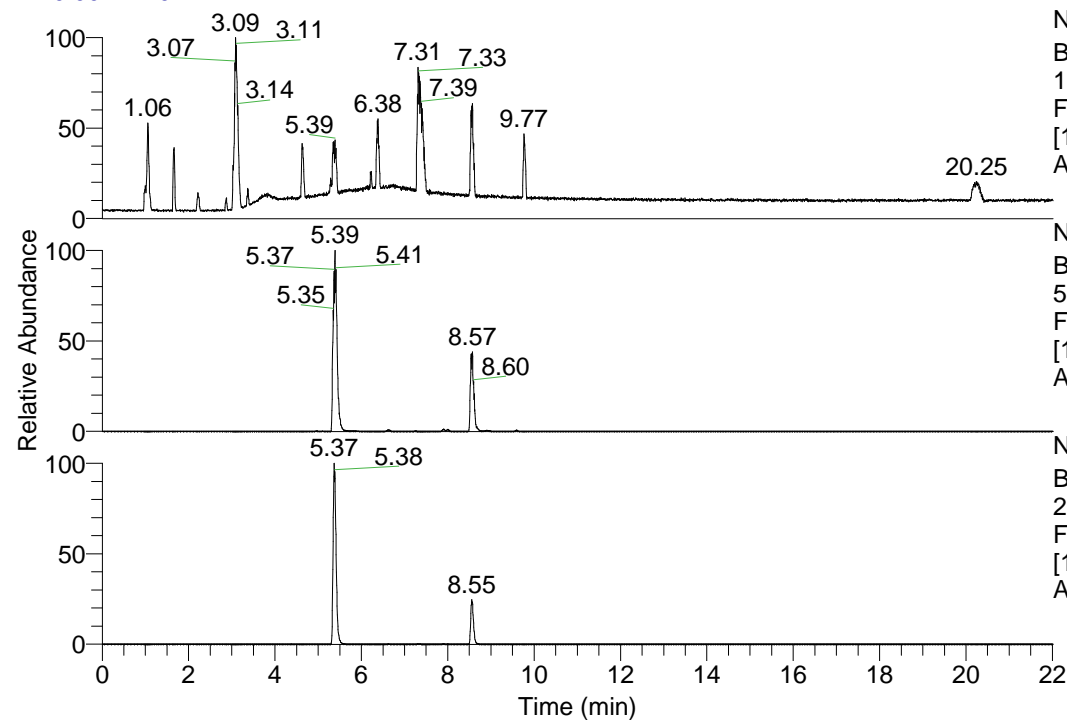


RT: 0.00 - 22.01

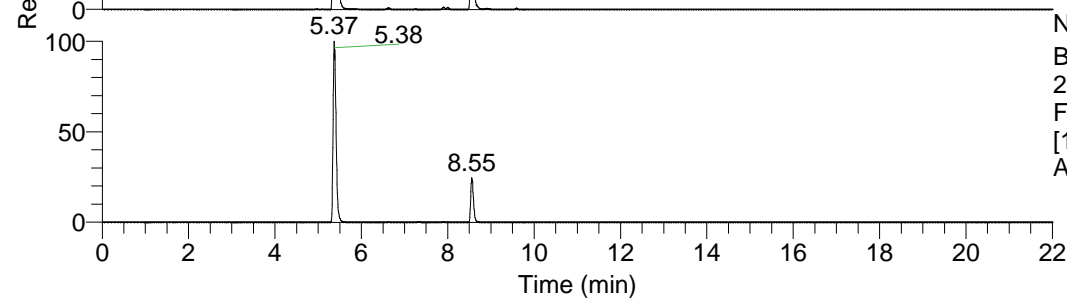


NL: 1.69E8
 Base Peak m/z=
 100.00000-1500.00000 F:
 FTMS + p ESI Full ms
 [100.00-1500.00] MS
 Apotteri_HDX

Apotteri_HDX#852 RT: 5.39
 T: FTMS + p ESI Full ms [100.00-1500.00]
 m/z = 516.00000-517.00000

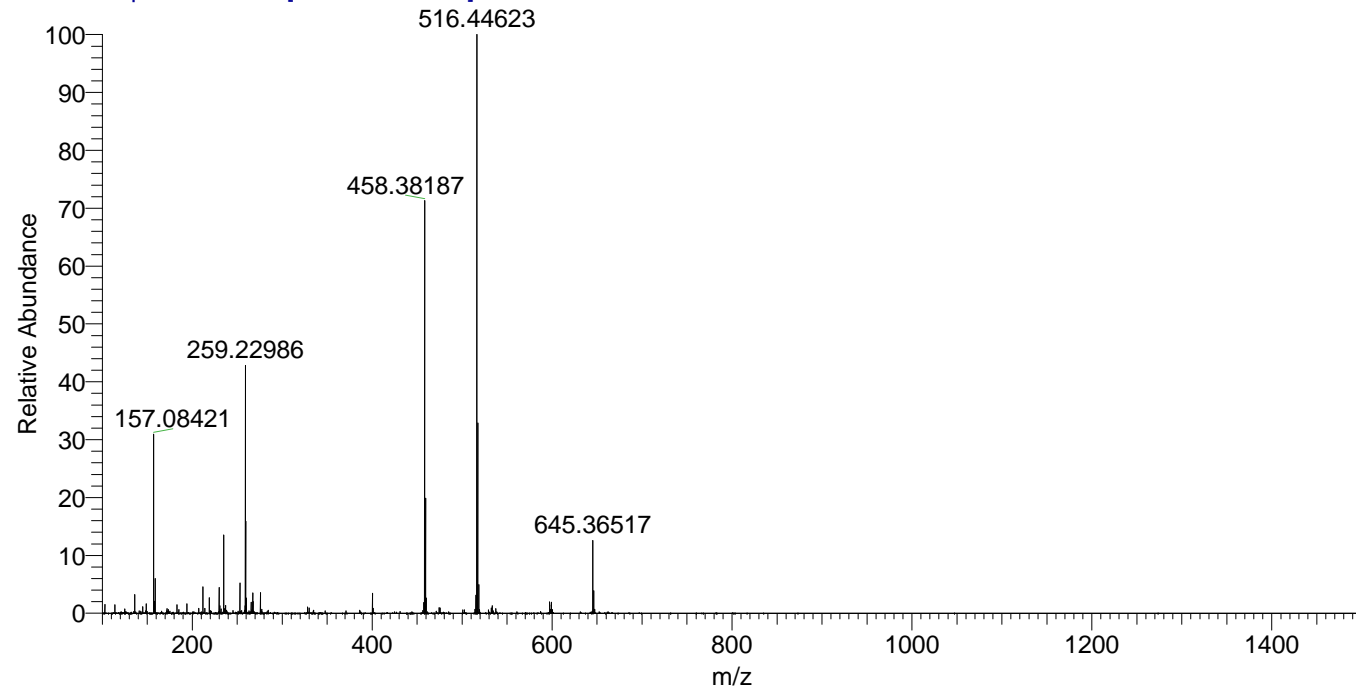
| m/z | Intensity | Relative | Delta (ppm) | Composition |
|-----------|------------|----------|-------------|--------------------------------------------------------------------------------------------|
| 516.44623 | 73291368.0 | 100.00 | 1.16 | C ₂₆ H ₄₀ ² H ₉ O ₃ N ₇ |
| | | | -1.84 | C ₂₆ H ₄₂ ² H ₈ O ₃ N ₇ |
| | | | 4.15 | C ₂₆ H ₃₈ ² H ₁₀ O ₃ N ₇ |
| | | | -4.84 | C ₂₆ H ₄₄ ² H ₇ O ₃ N ₇ |

NL: 7.33E7
 Base Peak m/z=
 516.44205-516.44721 F:
 FTMS + p ESI Full ms
 [100.00-1500.00] MS
 Apotteri_HDX



NL: 3.48E7
 Base Peak m/z=
 259.22807-259.23067 F:
 FTMS + p ESI Full ms
 [100.00-1500.00] MS
 Apotteri_HDX

Apotteri_HDX #852 RT: 5.39 AV: 1 NL: 7.24E7
 T: FTMS + p ESI Full ms [100.00-1500.00]



Apotteri_HDX #852 RT: 5.39 AV: 1 NL: 7.24E7
 T: FTMS + p ESI Full ms [100.00-1500.00]

