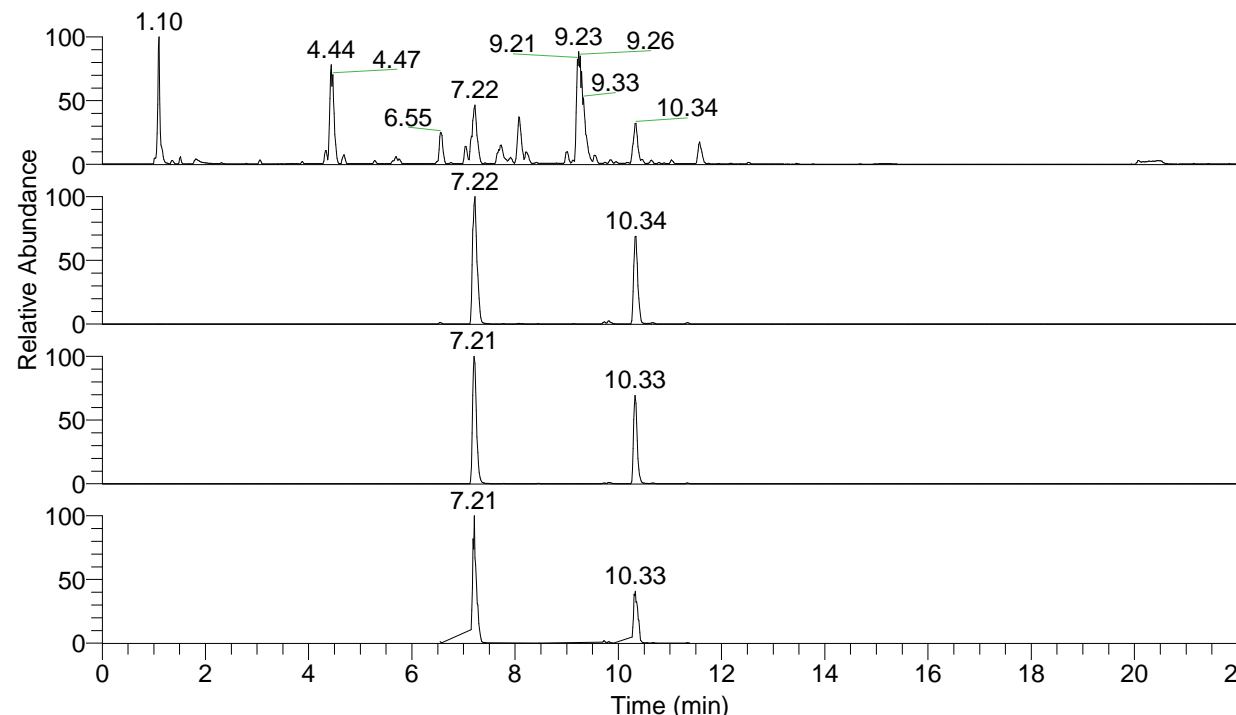


RT: 0.00 - 22.00



NL: 1.25E8  
 Base Peak m/z= 100.00000-1500.00000 F:  
 FTMS + p ESI Full ms [100.00-1500.00]  
 MS Apotteri

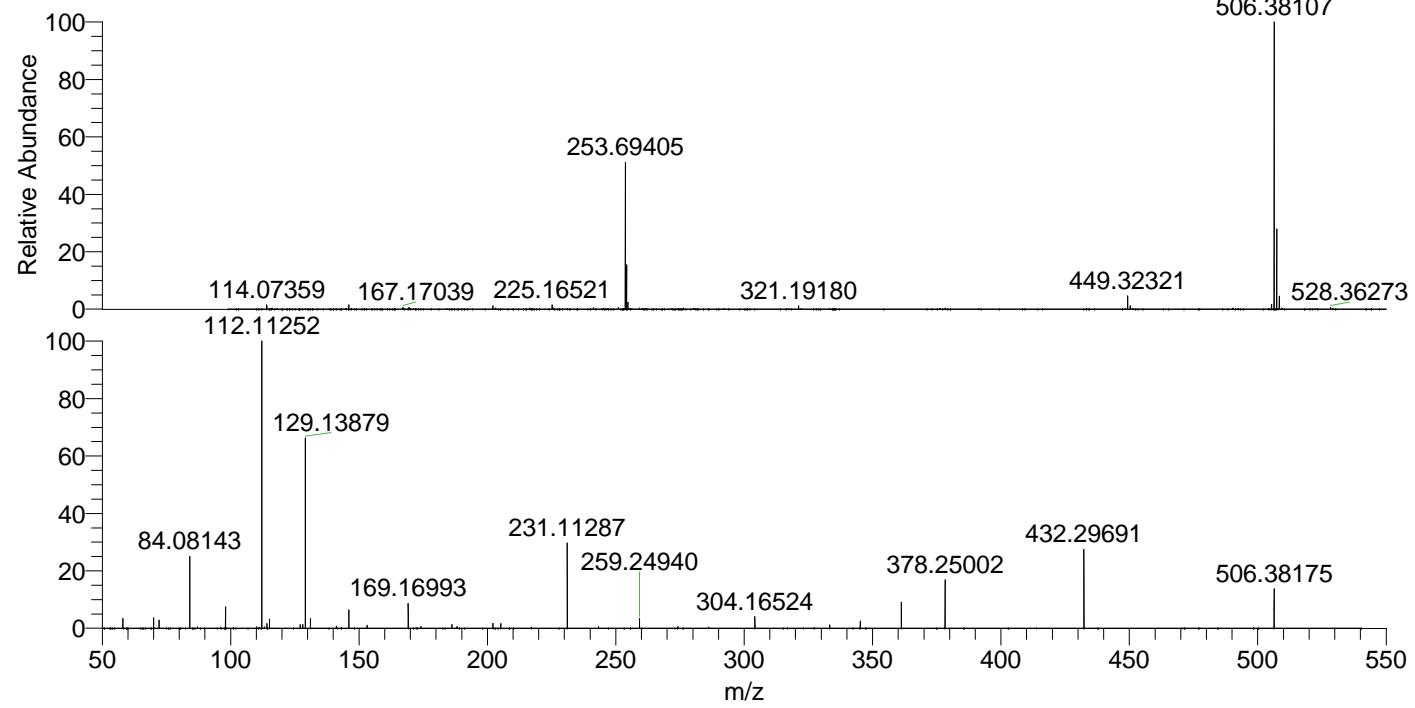
NL: 5.84E7  
 Base Peak m/z= 506.37933-506.38439 F:  
 FTMS + p ESI Full ms [100.00-1500.00]  
 MS Apotteri

NL: 3.34E7  
 Base Peak m/z= 253.69357-253.69611 F:  
 FTMS + p ESI Full ms [100.00-1500.00]  
 MS Apotteri

NL: 1.23E7  
 Base Peak m/z= 50.00000-1500.00000 F:  
 FTMS + p ESI d Full ms2  
 506.38@hcd35.00 [50.00-535.00] MS  
 Apotteri

Apotteri#2872-2912 RT: 7.16-7.25 AV: 8  
 F: FTMS + p ESI d Full ms2 506.38@h ...  
 m/z= 50.00000-1000.00000

m/z	Intensity	Relative
58.06599	244124.3	3.40
70.06588	261581.5	3.65
72.08159	200871.0	2.80
84.08143	1798360.3	25.07
98.09703	538274.1	7.51
110.09688	37585.8	0.52
112.11252	7172063.0	100.00
113.10769	39065.8	0.54
114.09171	118673.8	1.65
115.12328	233140.0	3.25
127.12313	98344.0	1.37
128.10730	93530.7	1.30
129.13879	4878540.0	68.02
131.11802	243892.0	3.40
141.13872	48747.9	0.68
146.06008	465900.6	6.50
153.13877	70809.5	0.99
169.16993	613424.9	8.55
174.05495	48109.0	0.67
186.19659	94032.0	1.31
188.17601	47380.2	0.66
202.19142	126109.1	1.76
205.20238	112263.3	1.57
231.11287	2122045.3	29.59
243.25428	48000.8	0.67
259.24937	257595.7	3.59
274.15416	43407.0	0.61
304.16525	286829.8	4.00
333.33353	81348.2	1.13
345.22836	181061.2	2.52
361.22341	675094.8	9.41
378.25003	1200999.9	16.75
432.29692	1999736.0	27.88
506.38177	980516.7	13.67



NL: 5.83E7  
 Apotteri#2899 RT: 7.22  
 AV: 1 T: FTMS + p ESI  
 Full ms [100.00-1500.00]

NL: 7.73E6  
 Apotteri#2874-2917 RT:  
 7.17-7.25 AV: 7 F: FTMS  
 + p ESI d Full ms2  
 506.38@hcd35.00  
 [50.00-535.00]