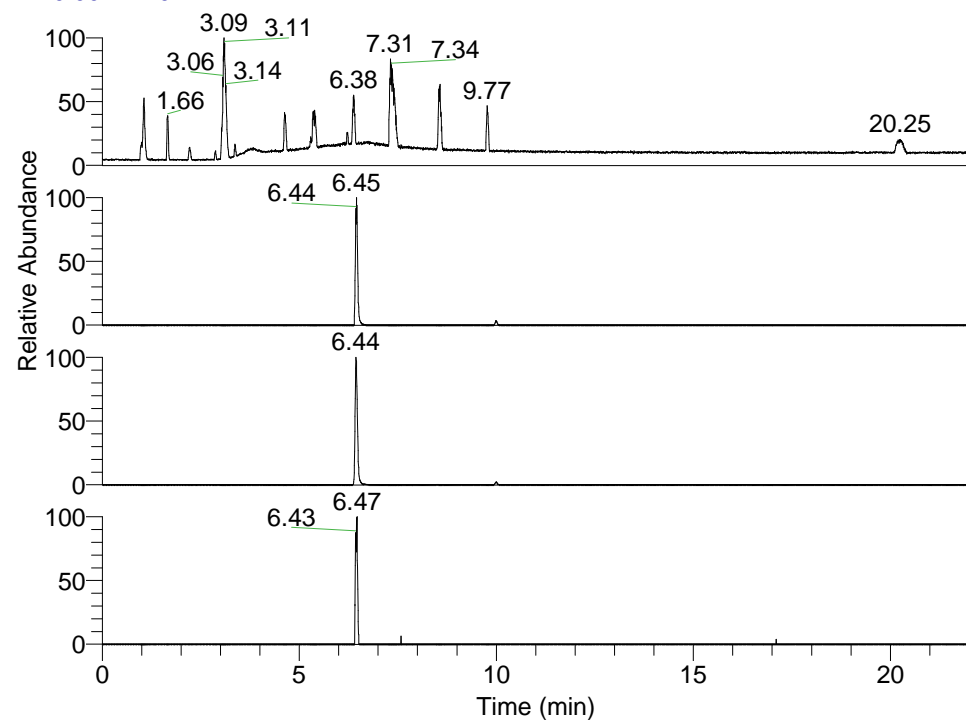


RT: 0.00 - 22.01



NL: 1.69E8
 Base Peak m/z=
 100.00000-1500.00000 F: FTMS + p
 ESI Full ms [100.00-1500.00] MS
 Apotteri_HDX

NL: 5.36E6
 Base Peak m/z=
 511.42172-511.42684 F: FTMS + p
 ESI Full ms [100.00-1500.00] MS
 Apotteri_HDX

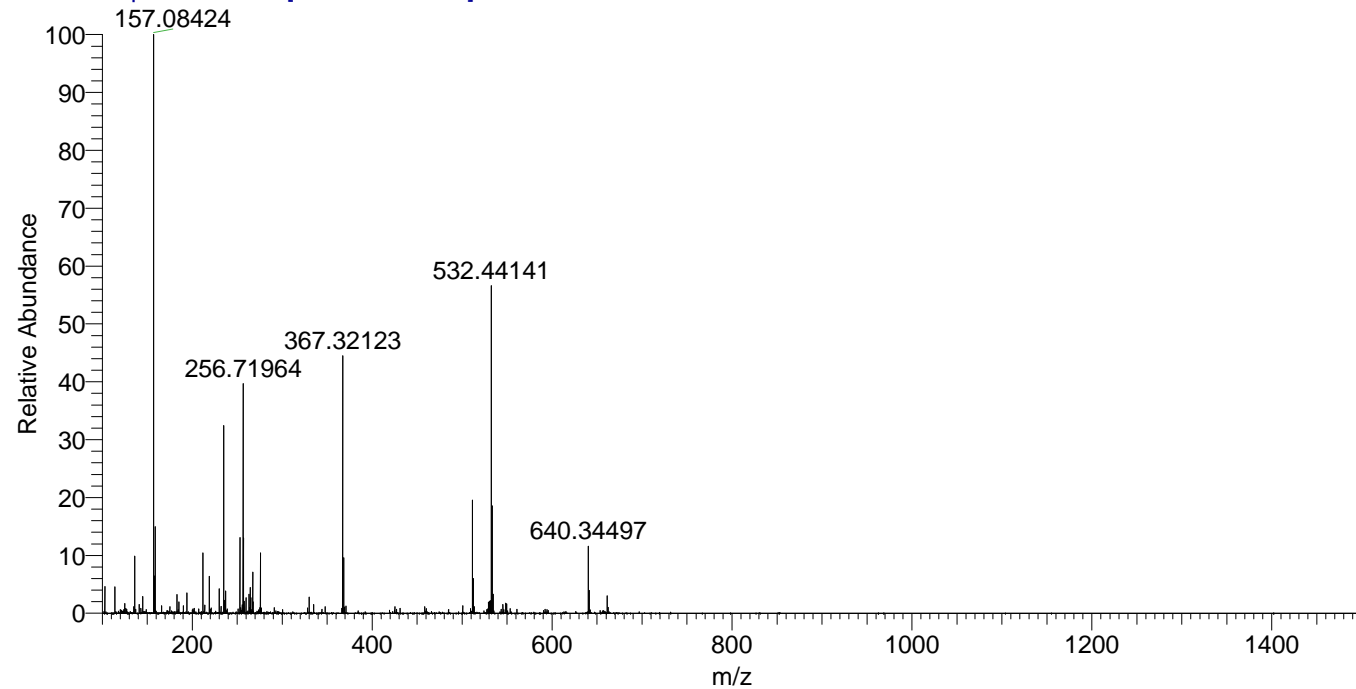
NL: 1.13E7
 Base Peak m/z=
 256.71791-256.72047 F: FTMS + p
 ESI Full ms [100.00-1500.00] MS
 Apotteri_HDX

NL: 8.64E4
 Base Peak m/z=
 626.42029-626.42655 F: FTMS + p
 ESI Full ms [100.00-1500.00] MS
 Apotteri_HDX

Apotteri_HDX#1031 RT: 6.45
 T: FTMS + p ESI Full ms [100.00-1500.00]
 m/z= 511.00000-512.00000

m/z	Intensity	Relative	Delta (ppm)	Composition
511.42621	5355508.5	100.00	-1.20	C ₂₇ H ₄₇ ² H ₄ O ₃ N ₆
			1.83	C ₂₇ H ₄₅ ² H ₅ O ₃ N ₆
			-4.23	C ₂₇ H ₄₉ ² H ₃ O ₃ N ₆
			4.85	C ₂₇ H ₄₃ ² H ₆ O ₃ N ₆

Apotteri_HDX #1031 RT: 6.45 AV: 1 NL: 2.74E7
 T: FTMS + p ESI Full ms [100.00-1500.00]



Apotteri_HDX #1031 RT: 6.45 AV: 1 NL: 5.35E6
 T: FTMS + p ESI Full ms [100.00-1500.00]

