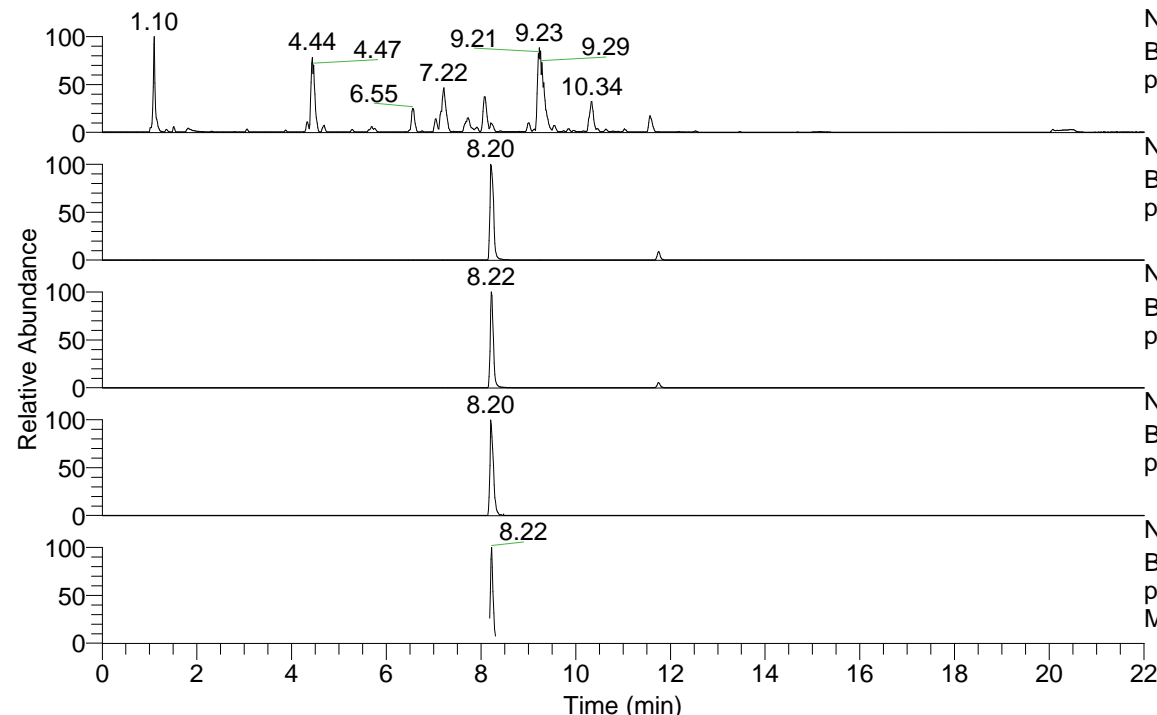


RT: 0.00 - 22.00



NL: 1.25E8  
 Base Peak m/z= 100.00000-1500.00000 F: FTMS +  
 p ESI Full ms [100.00-1500.00] MS Apotteri

NL: 1.22E7  
 Base Peak m/z= 505.38408-505.38914 F: FTMS +  
 p ESI Full ms [100.00-1500.00] MS Apotteri

NL: 6.51E6  
 Base Peak m/z= 253.19595-253.19849 F: FTMS +  
 p ESI Full ms [100.00-1500.00] MS Apotteri

NL: 2.29E5  
 Base Peak m/z= 619.37638-619.38258 F: FTMS +  
 p ESI Full ms [100.00-1500.00] MS Apotteri

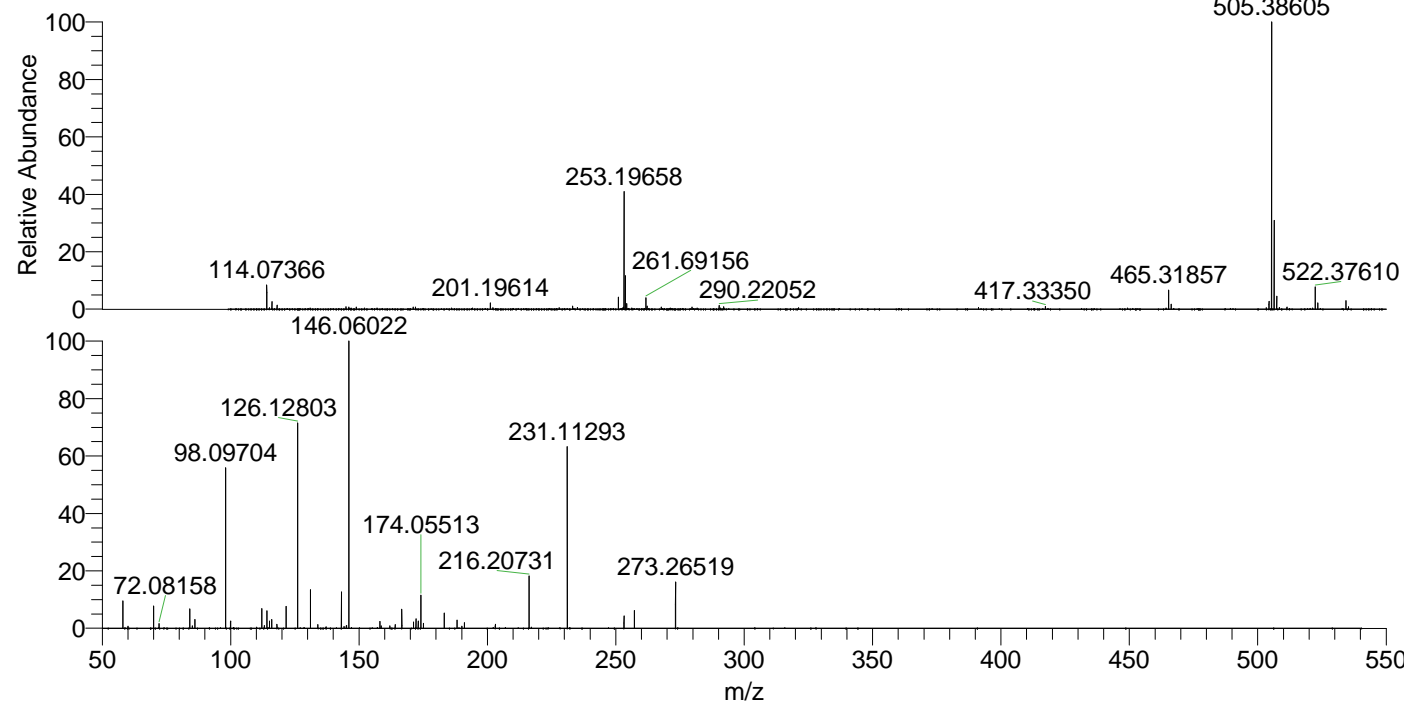
NL: 1.01E6  
 Base Peak m/z= 50.00000-1500.00000 F: FTMS +  
 p ESI d Full ms2 253.20@hcd35.00 [50.00-535.00]  
 MS Apotteri

Apotteri#3288-3321 RT: 8.18-8.27 AV: 7

F: FTMS + p ESI d Full ms2 253.20 ...

m/z= 50.00000-1000.00000

m/z	Intensity	Relative
58.06603	56916.2	9.77
60.08160	4583.7	0.79
70.06591	45597.2	7.83
72.08158	9159.3	1.57
84.08149	40562.7	6.96
85.07655	5102.6	0.88
86.06080	16036.0	2.75
86.09713	18011.3	3.09
98.09704	326894.9	56.12
99.98759	14905.0	2.56
112.11259	39940.3	6.86
113.10771	5709.9	0.98
114.09194	35932.8	6.17
115.12323	14565.0	2.50
115.96450	17662.1	3.03
117.99793	8195.1	1.41
121.63350	45367.9	7.79
126.12803	430411.8	73.89
131.11813	79496.5	13.65
133.97490	7258.3	1.25
143.15442	75084.9	12.89
144.14376	3421.8	0.59
145.05225	4860.8	0.83
145.17010	5556.3	0.95
146.06022	582517.6	100.00
158.16014	14231.8	2.44
158.67583	4884.8	0.84
162.05511	5016.3	0.86
164.07101	7423.0	1.27
166.67319	38938.9	6.68
171.18588	13046.4	2.24
172.18113	19171.3	3.29
173.04764	14825.4	2.55
174.05513	68455.7	11.75
175.08693	10037.1	1.72
183.18605	31245.9	5.36
188.17631	16544.7	2.84
190.05018	4047.6	0.69
191.05816	11653.5	2.00
191.08176	6866.0	1.18
203.08203	7907.7	1.36
216.20731	108720.0	18.66
231.11293	373484.5	64.12
253.19710	25332.0	4.35
257.27001	35947.7	6.17
273.26519	93846.4	16.11



NL: 1.21E7  
 Apotteri#3295 RT: 8.20  
 AV: 1 T: FTMS + p ESI  
 Full ms [100.00-1500.00]

NL: 5.82E5  
 Apotteri#3285-3325 RT:  
 8.18-8.27 AV: 7 F: FTMS  
 + p ESI d Full ms2  
 253.20@hcd35.00  
 [50.00-535.00]