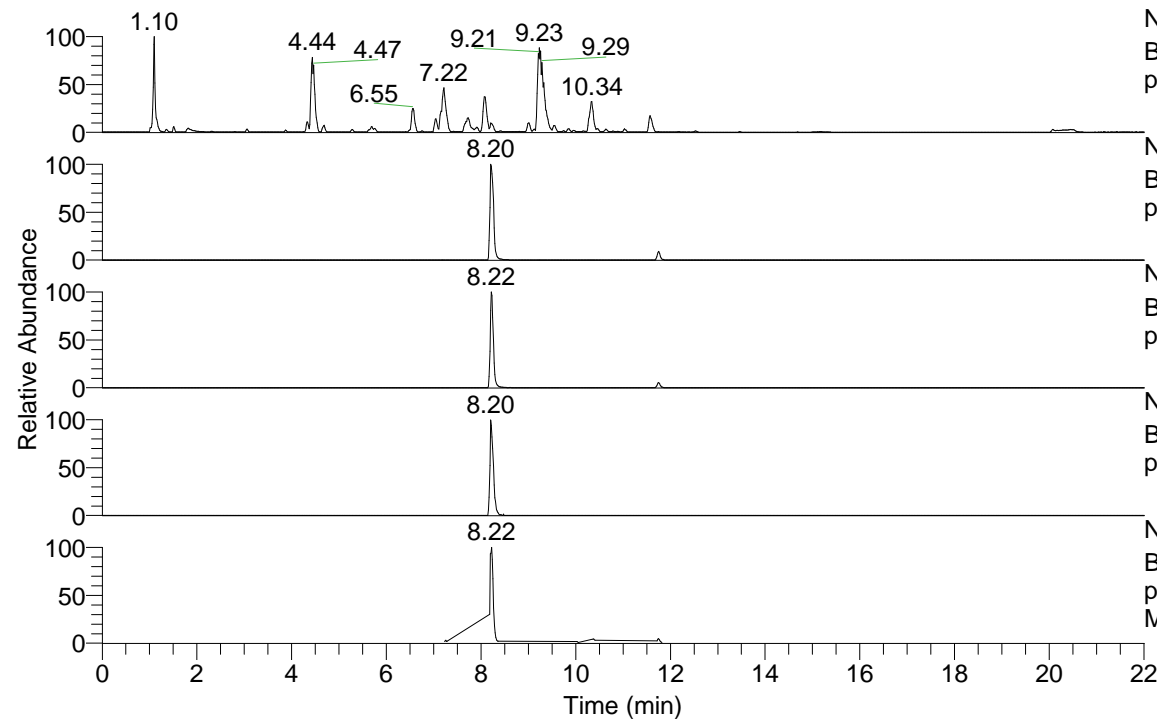


RT: 0.00 - 22.00



NL: 1.25E8  
 Base Peak m/z= 100.00000-1500.00000 F: FTMS +  
 p ESI Full ms [100.00-1500.00] MS Apotteri

NL: 1.22E7  
 Base Peak m/z= 505.38408-505.38914 F: FTMS +  
 p ESI Full ms [100.00-1500.00] MS Apotteri

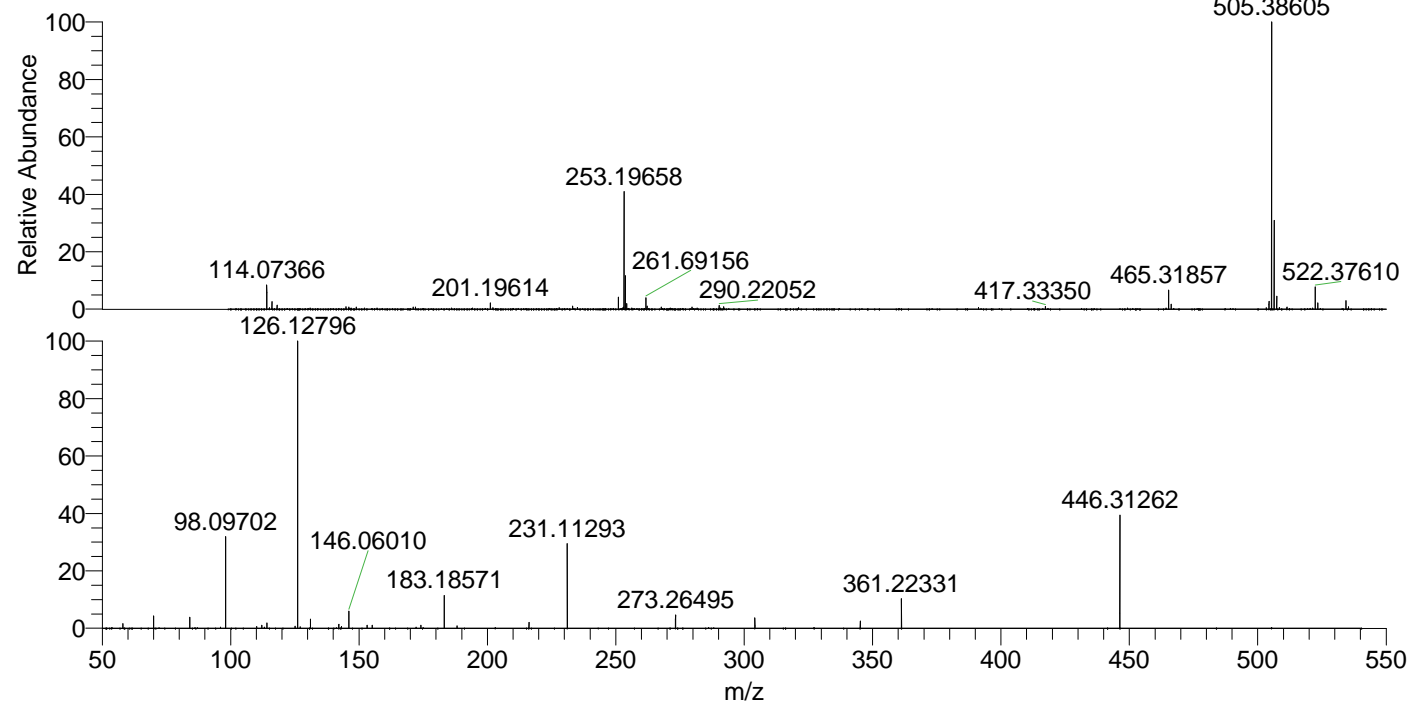
NL: 6.51E6  
 Base Peak m/z= 253.19595-253.19849 F: FTMS +  
 p ESI Full ms [100.00-1500.00] MS Apotteri

NL: 2.29E5  
 Base Peak m/z= 619.37638-619.38258 F: FTMS +  
 p ESI Full ms [100.00-1500.00] MS Apotteri

NL: 3.18E6  
 Base Peak m/z= 50.00000-1500.00000 F: FTMS +  
 p ESI d Full ms2 505.35@hcd35.00 [50.00-535.00]  
 MS Apotteri

Apotteri#3286-3326 RT: 8.18-8.28 AV: 8  
 F: FTMS + p ESI d Full ms2 505.35@h ...  
 m/z= 50.00000-1000.00000

m/z	Intensity	Relative
58.06600	32248.0	1.64
70.06591	86590.9	4.39
84.08146	75024.8	3.81
98.09702	638511.8	32.39
110.09683	11978.3	0.61
112.11240	21474.8	1.09
114.09167	36600.4	1.86
125.12010	13301.2	0.67
126.12796	1971598.9	100.00
131.11809	63509.4	3.22
142.12286	25676.2	1.30
143.15441	11526.6	0.58
146.06010	118489.7	6.01
153.13870	19561.0	0.99
155.15439	21977.1	1.11
174.05506	19182.9	0.97
183.18571	232030.7	11.77
188.17598	17509.2	0.89
216.20721	41567.5	2.11
231.11293	579922.4	29.41
273.26497	93785.4	4.76
304.16542	70628.7	3.58
345.22881	47890.2	2.43
361.22335	208663.5	10.58
446.31262	776837.1	39.40



NL: 1.21E7  
 Apotteri#3295 RT: 8.20  
 AV: 1 T: FTMS + p ESI  
 Full ms [100.00-1500.00]

NL: 2.16E6  
 Apotteri#3282-3321 RT:  
 8.18-8.27 AV: 7 F: FTMS  
 + p ESI d Full ms2  
 505.35@hcd35.00  
 [50.00-535.00]