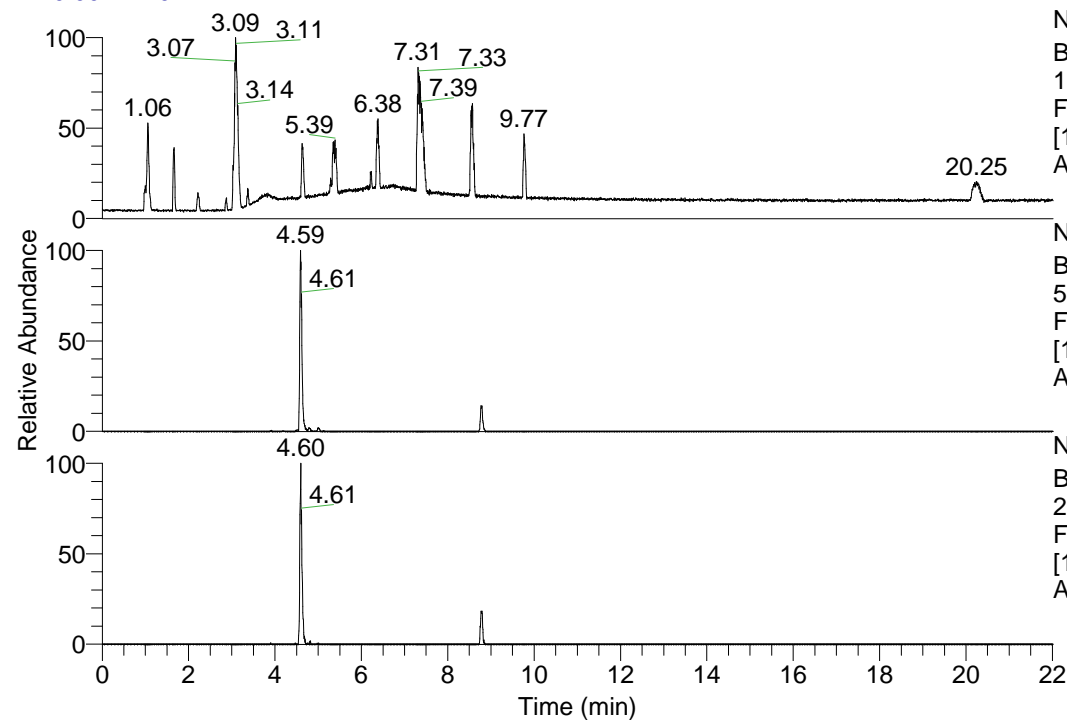


RT: 0.00 - 22.01



NL: 1.69E8  
 Base Peak m/z=  
 100.00000-1500.00000 F:  
 FTMS + p ESI Full ms  
 [100.00-1500.00] MS  
 Apotteri\_HDX

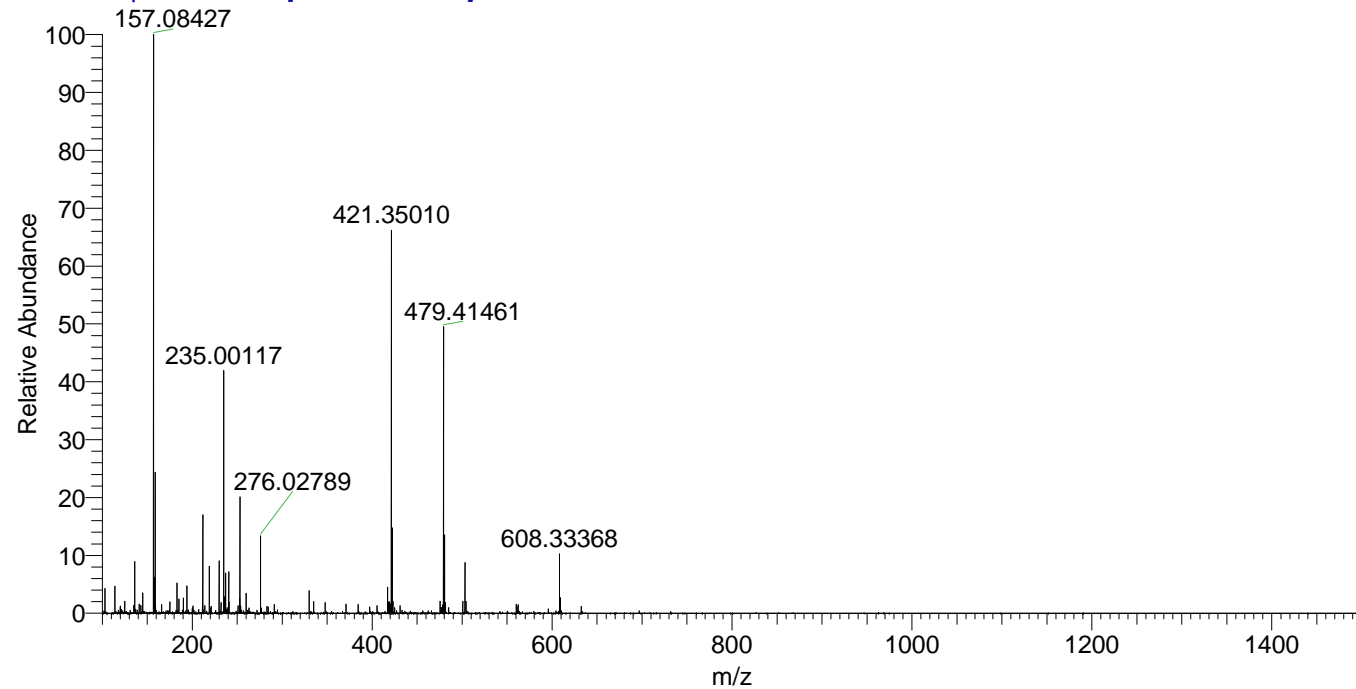
NL: 1.91E6  
 Base Peak m/z=  
 503.41357-503.41861 F:  
 FTMS + p ESI Full ms  
 [100.00-1500.00] MS  
 Apotteri\_HDX

NL: 6.38E5  
 Base Peak m/z=  
 252.71384-252.71636 F:  
 FTMS + p ESI Full ms  
 [100.00-1500.00] MS  
 Apotteri\_HDX

Apotteri\_HDX#719 RT: 4.59  
 T: FTMS + p ESI Full ms [100.00-1500.00]  
 m/z= 503.00000-504.00000

m/z	Intensity	Relative	Delta (ppm)	Composition
503.41772	1914317.1	100.00	1.26	C <sub>25</sub> H <sub>41</sub> <sup>2</sup> H <sub>7</sub> O <sub>4</sub> N <sub>6</sub>
			-1.82	C <sub>25</sub> H <sub>43</sub> <sup>2</sup> H <sub>6</sub> O <sub>4</sub> N <sub>6</sub>
			4.33	C <sub>25</sub> H <sub>39</sub> <sup>2</sup> H <sub>8</sub> O <sub>4</sub> N <sub>6</sub>
			-4.90	C <sub>25</sub> H <sub>45</sub> <sup>2</sup> H <sub>5</sub> O <sub>4</sub> N <sub>6</sub>

Apotteri\_HDX #719 RT: 4.59 AV: 1 NL: 2.12E7  
 T: FTMS + p ESI Full ms [100.00-1500.00]



Apotteri\_HDX #719 RT: 4.59 AV: 1 NL: 1.85E6  
 T: FTMS + p ESI Full ms [100.00-1500.00]

