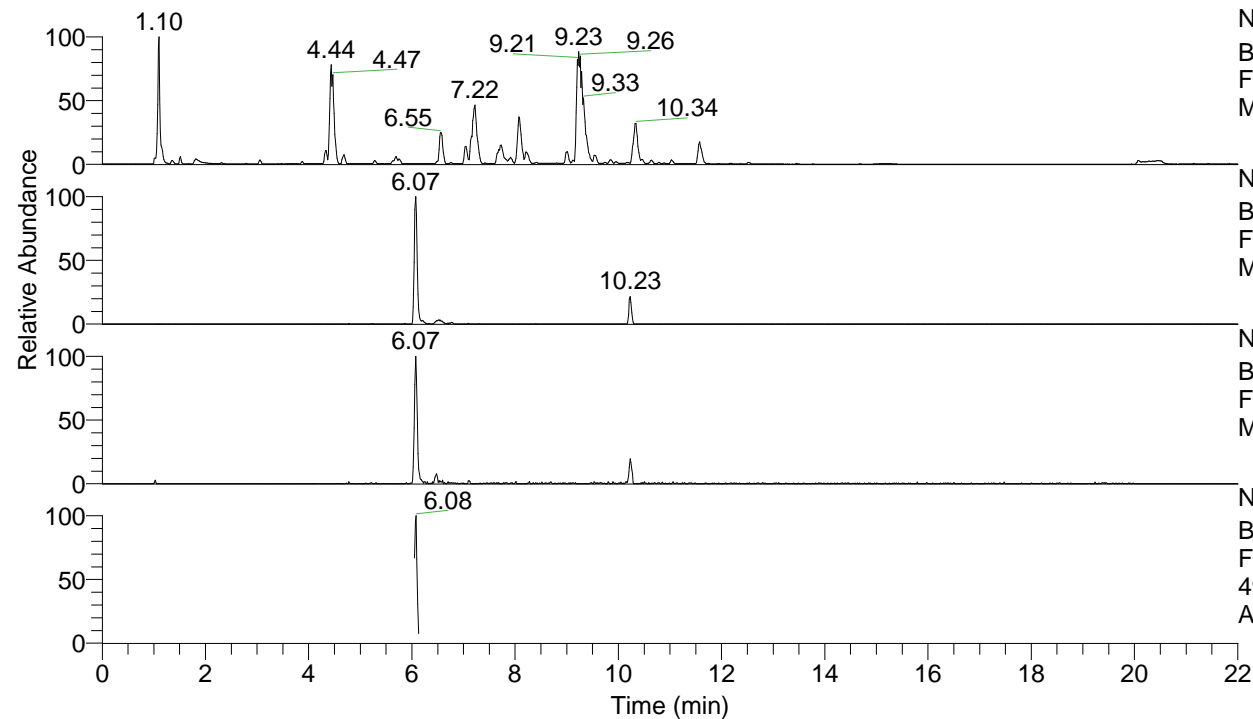


RT: 0.00 - 22.00



NL: 1.25E8
 Base Peak m/z= 100.00000-1500.00000 F:
 FTMS + p ESI Full ms [100.00-1500.00]
 MS Apotteri

NL: 7.12E5
 Base Peak m/z= 495.36340-495.36836 F:
 FTMS + p ESI Full ms [100.00-1500.00]
 MS Apotteri

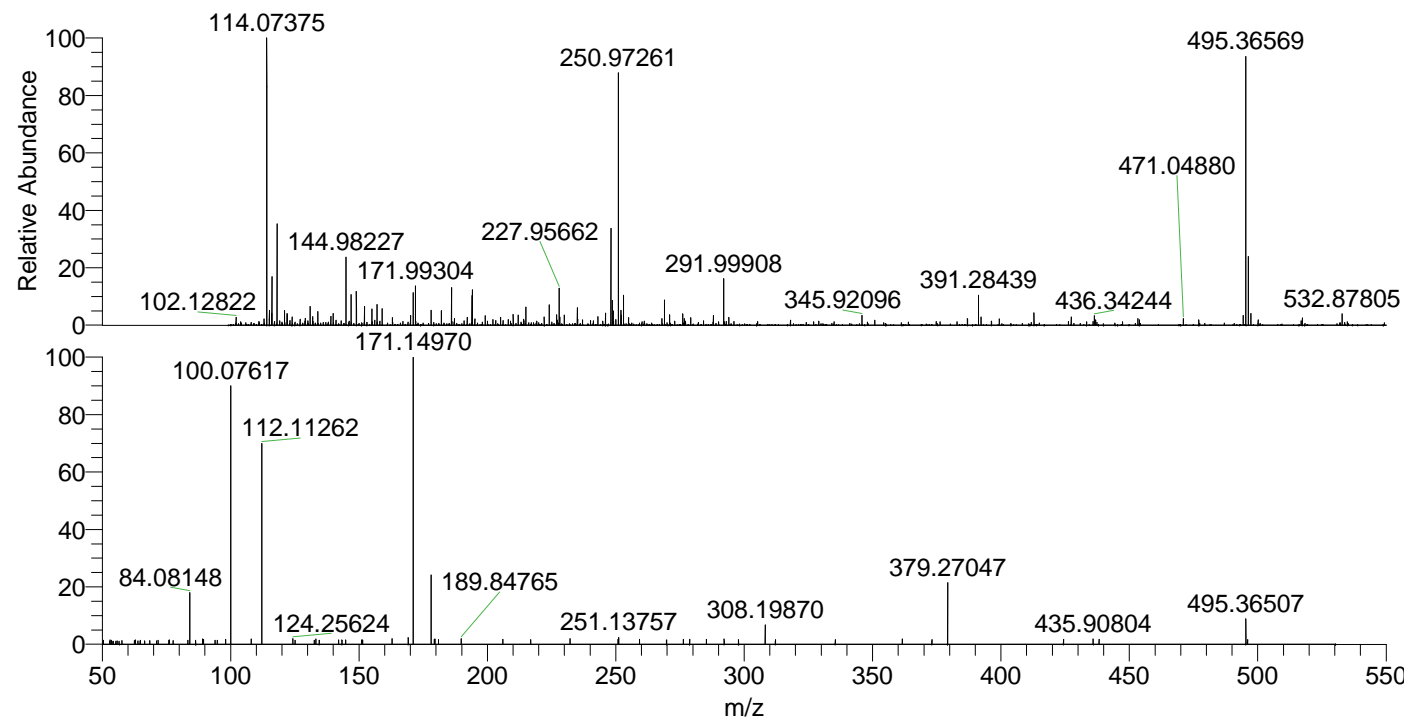
NL: 2.62E5
 Base Peak m/z= 248.18561-248.18809 F:
 FTMS + p ESI Full ms [100.00-1500.00]
 MS Apotteri

NL: 7.87E4
 Base Peak m/z= 50.00000-1500.00000 F:
 FTMS + p ESI d Full ms2
 495.37@hcd35.00 [50.00-525.00] MS
 Apotteri

Apotteri#2428-2452 RT: 6.05-6.11 AV: 5

F: FTMS + p ESI d Full ms2 495.37 ...
 m/z= 50.00000-1000.00000

m/z	Intensity	Relative
53.02853	808.0	1.46
53.61021	793.3	1.44
62.92480	808.5	1.46
71.76414	785.2	1.42
75.96273	786.3	1.42
76.08158	861.7	1.56
83.35580	785.6	1.42
84.08148	10039.9	18.16
89.11039	1006.7	1.82
89.43565	955.2	1.73
93.93279	772.7	1.40
94.86982	774.0	1.40
98.09666	971.3	1.76
100.07617	51704.6	93.53
108.00305	1053.0	1.90
112.11262	40169.2	72.67
124.25624	1087.5	1.97
133.25782	1015.7	1.84
134.51746	786.9	1.42
142.10909	837.4	1.51
143.36794	820.8	1.48
144.80842	848.9	1.54
150.98702	835.5	1.51
151.45822	836.3	1.51
162.85131	1057.8	1.91
169.17121	1291.7	2.34
171.14970	55278.5	100.00
178.08693	13406.4	24.25
179.29626	982.1	1.78
179.62092	1003.6	1.82
180.99473	919.7	1.66
189.84765	1114.3	2.02
205.97459	966.2	1.75
216.85429	903.8	1.64
232.16719	1078.5	1.95
250.85199	1010.7	1.83
251.13757	1318.7	2.39
259.24902	948.9	1.72
269.77067	866.2	1.57
276.32340	940.1	1.70
278.77146	937.7	1.70
285.26577	948.3	1.72
292.20210	1012.6	1.83
297.80557	880.9	1.59
308.19870	3779.7	6.84
312.16048	899.4	1.63
335.47983	900.6	1.63
361.58056	1008.0	1.82
373.12011	892.2	1.61
379.27047	12136.3	21.95
424.36370	958.3	1.73
435.90804	1002.4	1.81
438.23932	977.0	1.77
495.36507	5003.0	9.05
496.08957	941.1	1.70



NL: 7.50E5
 Apotteri#2437 RT: 6.07
 AV: 1 T: FTMS + p ESI
 Full ms [100.00-1500.00]

NL: 5.52E4
 Apotteri#2423-2455 RT:
 6.05-6.11 AV: 5 F: FTMS
 + p ESI d Full ms2
 495.37@hcd35.00
 [50.00-525.00]