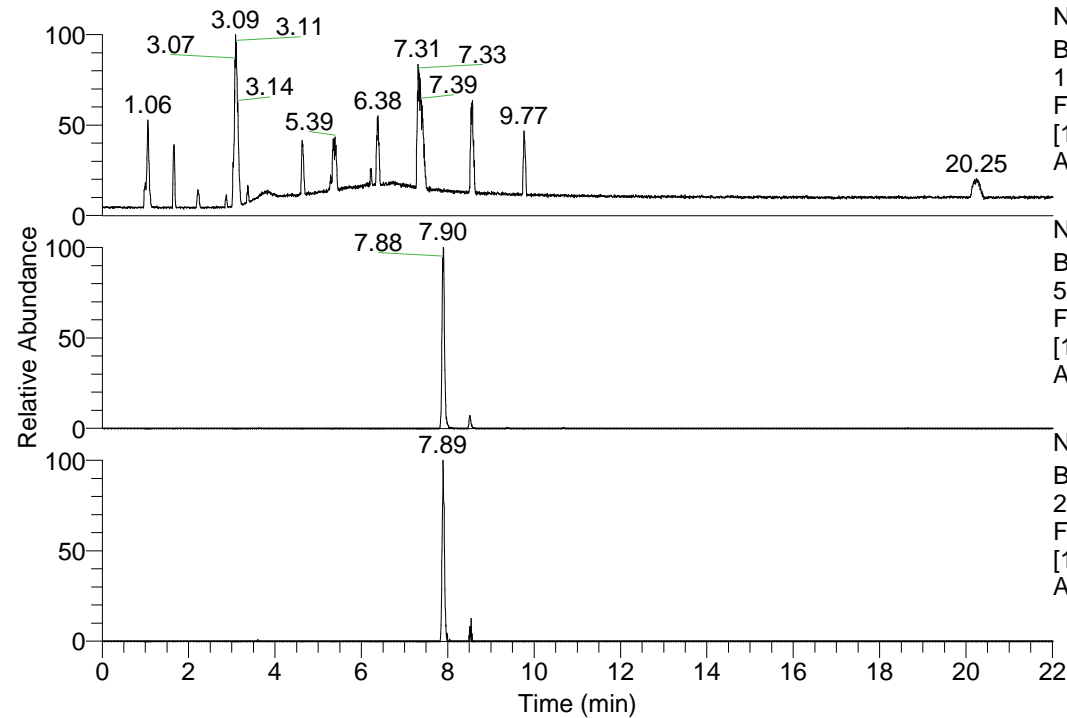


RT: 0.00 - 22.01



NL: 1.69E8  
Base Peak m/z=  
100.00000-1500.00000 F:  
FTMS + p ESI Full ms  
[100.00-1500.00] MS  
Apotteri\_HDX

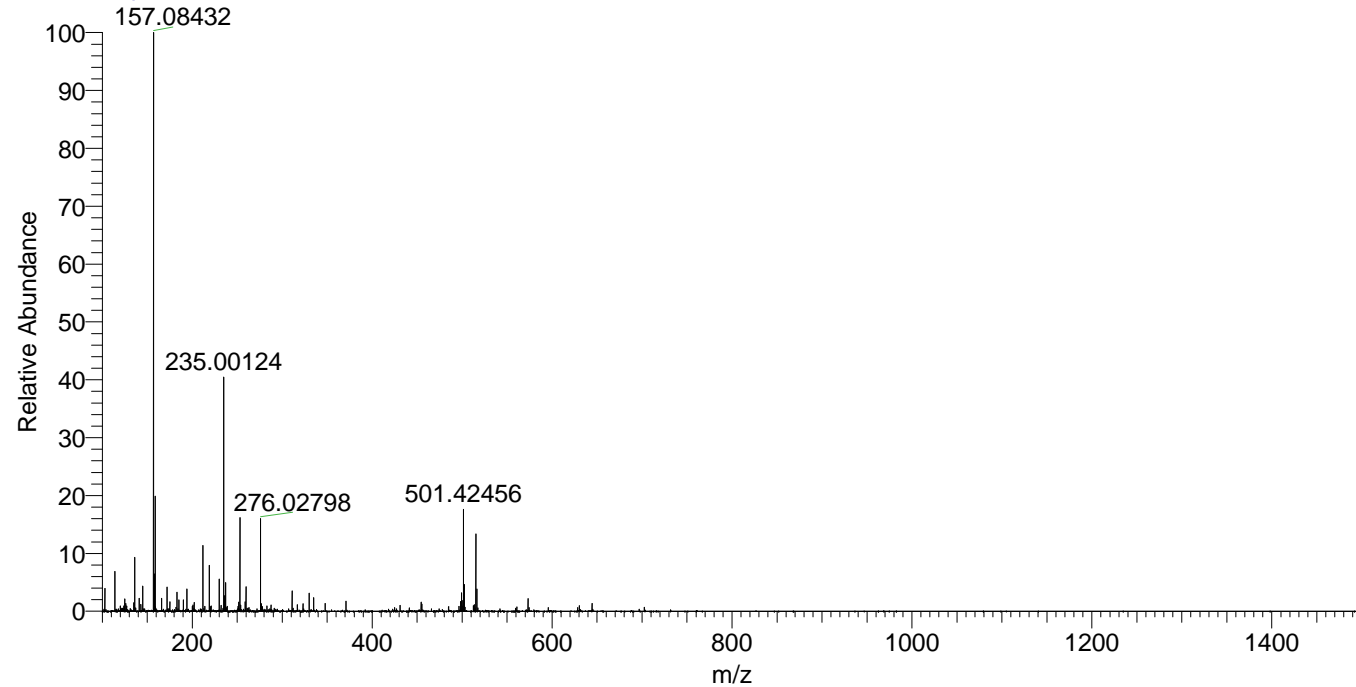
Apotteri\_HDX#1276 RT: 7.90  
T: FTMS + p ESI Full ms [100.00-1500.00]  
m/z= 501.00000-502.00000

m/z	Intensity	Relative	Delta (ppm)	Composition
501.42456	4074683.3	100.00	-1.38	C <sub>25</sub> H <sub>41</sub> <sup>2</sup> H <sub>7</sub> O <sub>3</sub> N <sub>7</sub>
			1.71	C <sub>25</sub> H <sub>39</sub> <sup>2</sup> H <sub>8</sub> O <sub>3</sub> N <sub>7</sub>
			-4.47	C <sub>25</sub> H <sub>43</sub> <sup>2</sup> H <sub>6</sub> O <sub>3</sub> N <sub>7</sub>
			4.80	C <sub>25</sub> H <sub>37</sub> <sup>2</sup> H <sub>9</sub> O <sub>3</sub> N <sub>7</sub>

NL: 4.07E6  
Base Peak m/z=  
501.42020-501.42522 F:  
FTMS + p ESI Full ms  
[100.00-1500.00] MS  
Apotteri\_HDX

NL: 3.78E5  
Base Peak m/z=  
251.71714-251.71966 F:  
FTMS + p ESI Full ms  
[100.00-1500.00] MS  
Apotteri\_HDX

Apotteri\_HDX #1276 RT: 7.90 AV: 1 NL: 2.25E7  
T: FTMS + p ESI Full ms [100.00-1500.00]



Apotteri\_HDX #1276 RT: 7.90 AV: 1 NL: 3.96E6  
T: FTMS + p ESI Full ms [100.00-1500.00]

