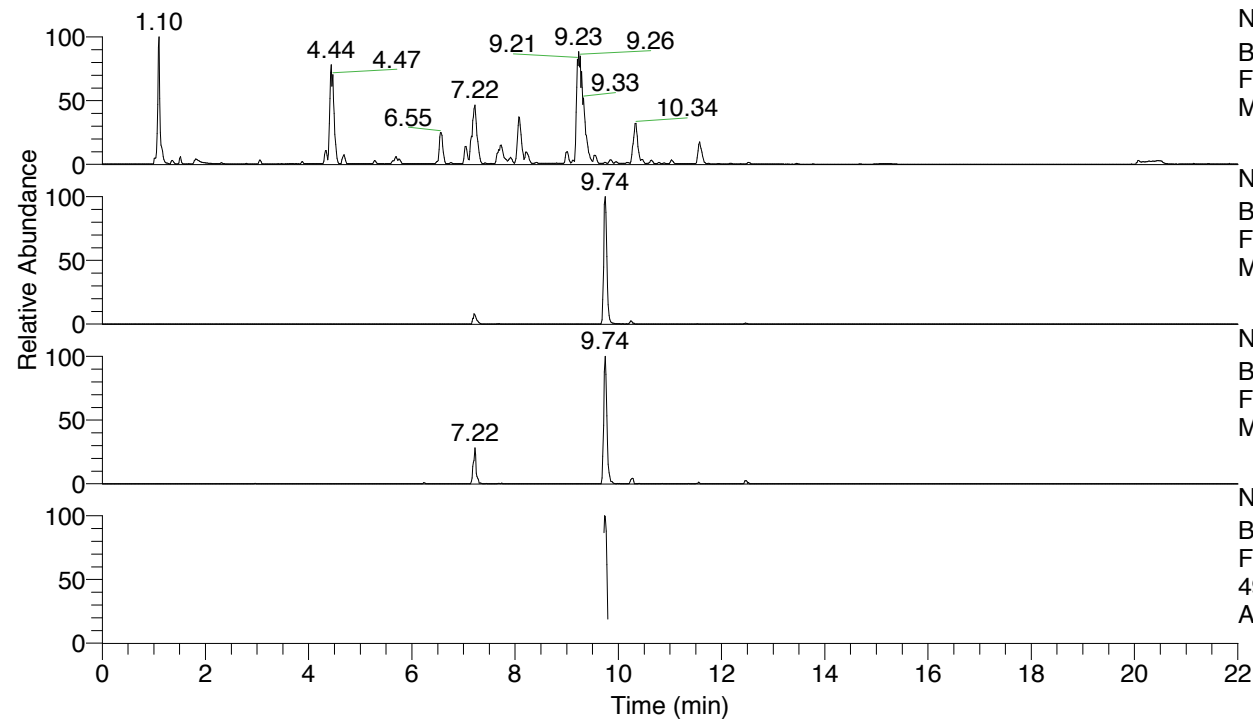


RT: 0.00 - 22.00



NL: 1.25E8
 Base Peak m/z= 100.00000-1500.00000 F:
 FTMS + p ESI Full ms [100.00-1500.00]
 MS Apotteri

NL: 2.10E6
 Base Peak m/z= 492.36375-492.36867 F:
 FTMS + p ESI Full ms [100.00-1500.00]
 MS Apotteri

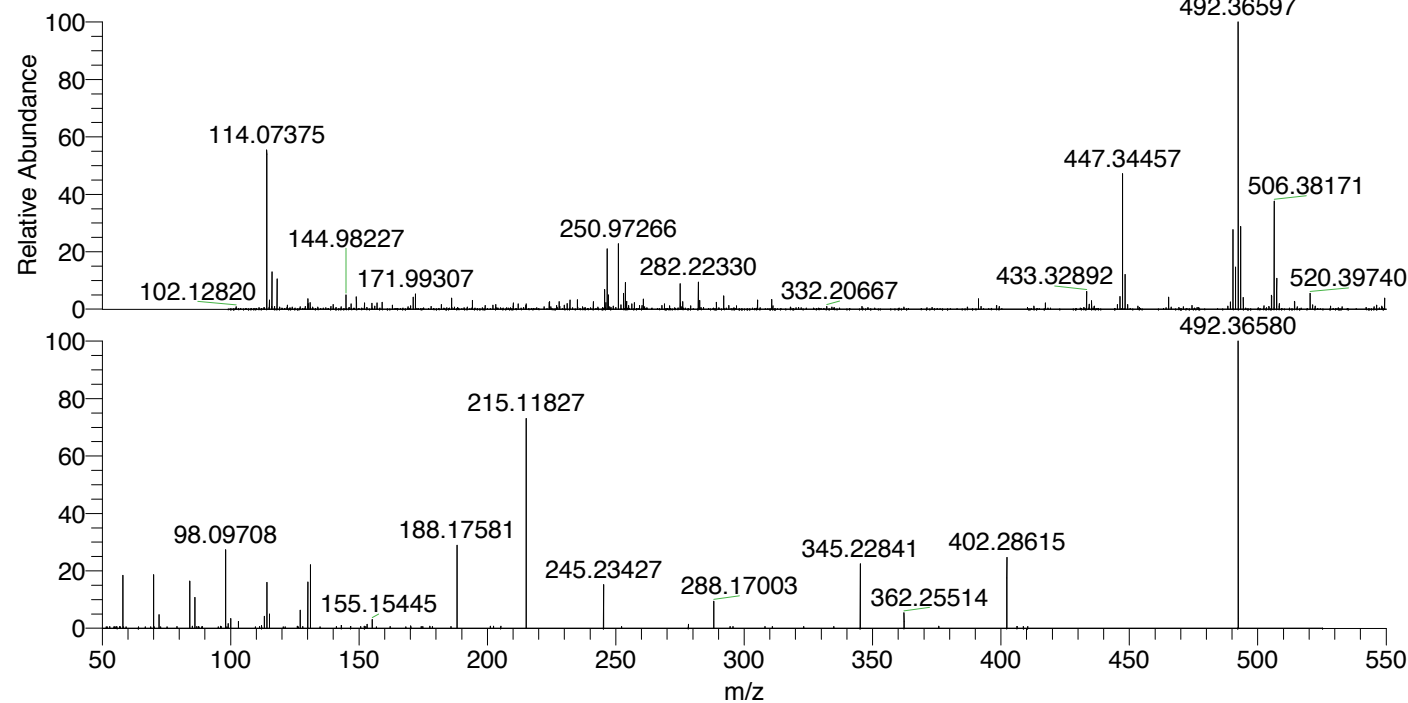
NL: 4.29E5
 Base Peak m/z= 246.68579-246.68825 F:
 FTMS + p ESI Full ms [100.00-1500.00]
 MS Apotteri

NL: 1.69E5
 Base Peak m/z= 50.00000-1500.00000 F:
 FTMS + p ESI d Full ms2
 492.37@hcd35.00 [50.00-520.00] MS
 Apotteri

Apotteri#3910-3932 RT: 9.72-9.78 AV: 5

F: FTMS + p ESI d Full ms2 492.37 ...
 m/z= 50.00000-1000.00000

m/z	Intensity	Relative
58.06599	26450.2	18.53
70.06596	26748.0	18.73
72.08162	6760.0	4.73
84.08141	23475.2	16.44
85.07650	1086.1	0.76
86.06078	15888.2	11.13
86.82574	890.6	0.62
87.64450	911.3	0.64
96.08153	1032.7	0.72
98.09708	39536.8	27.69
99.09237	2407.9	1.69
100.07614	4794.3	3.36
103.08721	3501.9	2.45
112.07639	1313.3	0.92
113.10787	6000.2	4.20
114.09182	23574.6	16.51
115.12358	6992.0	4.90
126.01452	962.5	0.67
127.12345	9127.5	6.39
130.06552	23607.2	16.54
131.11819	31481.9	22.05
143.11881	1391.0	0.97
146.73440	932.8	0.65
150.68298	872.7	0.61
152.08883	965.2	0.68
152.68236	912.6	0.64
153.13885	2063.6	1.45
155.15445	4405.4	3.09
162.12176	918.6	0.64
170.16517	1141.0	0.80
177.56086	1013.1	0.71
178.62511	894.9	0.63
185.77875	905.0	0.63
188.17581	41993.8	29.41
201.10313	1106.6	0.78
202.36907	1104.5	0.77
205.20348	1043.8	0.73
215.11827	104380.3	73.11
215.13636	2801.7	1.96
245.23427	21656.5	15.17
252.23839	911.7	0.64
278.25665	1949.2	1.37
288.17003	13687.8	9.59
294.52711	876.2	0.61
310.96138	925.1	0.65
323.19577	928.5	0.65
334.92115	883.5	0.62
345.22841	32000.4	22.41
362.25514	7846.3	5.50
375.80007	979.3	0.69
402.28615	35404.3	24.80
406.26350	929.6	0.65
408.73799	915.0	0.64
410.41237	925.2	0.65
492.36580	142770.6	100.00



NL: 2.00E6
 Apotteri#3919 RT: 9.74
 AV: 1 T: FTMS + p ESI
 Full ms [100.00-1500.00]

NL: 1.42E5
 Apotteri#3907-3935 RT:
 9.72-9.78 AV: 5 F: FTMS
 + p ESI d Full ms2
 492.37@hcd35.00
 [50.00-520.00]

Apotteri#3910-3932 RT: 9.72-9.78 AV: 5

F: FTMS + p ESI d Full ms2 492.37@hcd35.00 [50.00-520.00]

m/z= 50.00000-1000.00000

m/z	Intensity	Relative
52.93588	802.1	0.56
55.73226	823.0	0.58
56.84205	825.7	0.58
57.02195	748.9	0.52
58.06599	26450.2	18.53
66.75888	764.1	0.54
68.87768	755.1	0.53
70.06596	26748.0	18.73
70.20161	720.7	0.50
72.08162	6760.0	4.73
72.71993	720.6	0.50
75.30020	762.5	0.53
79.15875	833.6	0.58
84.08141	23475.2	16.44
85.07650	1086.1	0.76
86.06078	15888.2	11.13
86.82574	890.6	0.62
87.43744	727.2	0.51
87.64450	911.3	0.64
88.88699	743.7	0.52
88.99820	852.4	0.60
95.23665	777.8	0.54
96.08153	1032.7	0.72
96.32786	806.4	0.56
98.09708	39536.8	27.69
98.53333	794.2	0.56
99.09237	2407.9	1.69
100.07614	4794.3	3.36
103.03536	790.1	0.55
103.08721	3501.9	2.45
109.70008	775.0	0.54
111.22097	830.7	0.58
112.07639	1313.3	0.92
113.10787	6000.2	4.20
114.09182	23574.6	16.51
115.12358	6992.0	4.90
121.20066	754.7	0.53
126.01452	962.5	0.67
126.39326	751.8	0.53

Apotteri#3910-3932 RT: 9.72-9.78 AV: 5

F: FTMS + p ESI d Full ms2 492.37@hcd35.00 [50.00-520.00]

m/z= 50.00000-1000.00000

m/z	Intensity	Relative
127.12345	9127.5	6.39
128.14027	816.4	0.57
129.99927	774.8	0.54
130.06552	23607.2	16.54
131.11819	31481.9	22.05
134.81875	800.7	0.56
141.14017	856.8	0.60
143.11881	1391.0	0.97
146.73440	932.8	0.65
150.68298	872.7	0.61
152.08883	965.2	0.68
152.68236	912.6	0.64
153.13885	2063.6	1.45
155.15445	4405.4	3.09
156.76382	795.3	0.56
162.12176	918.6	0.64
168.19970	799.3	0.56
170.16517	1141.0	0.80
174.20618	821.1	0.58
174.87558	839.6	0.59
177.56086	1013.1	0.71
178.62511	894.9	0.63
185.77875	905.0	0.63
188.17581	41993.8	29.41
201.10313	1106.6	0.78
202.36907	1104.5	0.77
205.20348	1043.8	0.73
215.11827	104380.3	73.11
215.13636	2801.7	1.96
245.23427	21656.5	15.17
252.23839	911.7	0.64
278.25665	1949.2	1.37
288.17003	13687.8	9.59
294.52711	876.2	0.61
295.61361	858.7	0.60
308.11355	858.7	0.60
310.96138	925.1	0.65
323.19577	928.5	0.65
334.92115	883.5	0.62

Apotteri#3910-3932 RT: 9.72-9.78 AV: 5

F: FTMS + p ESI d Full ms2 492.37@hcd35.00 [50.00-520.00]

m/z= 50.00000-1000.00000

m/z	Intensity	Relative
345.22841	32000.4	22.41
362.25514	7846.3	5.50
375.80007	979.3	0.69
402.28615	35404.3	24.80
406.26350	929.6	0.65
408.73799	915.0	0.64
410.41237	925.2	0.65
492.36580	142770.6	100.00