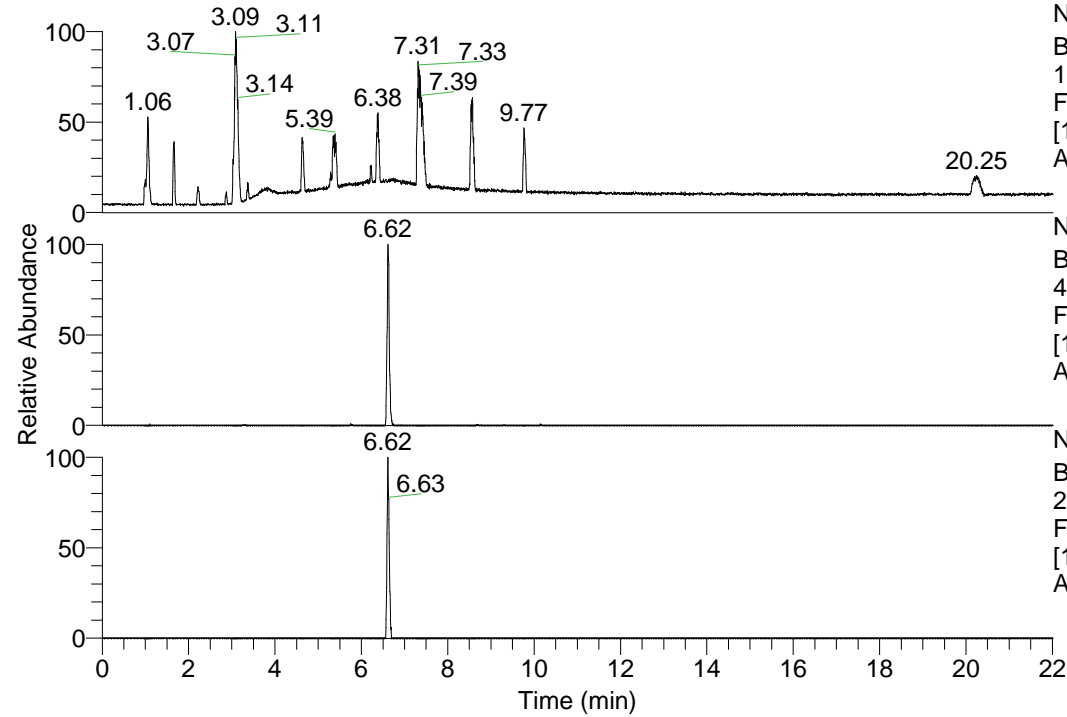


RT: 0.00 - 22.01



NL: 1.69E8
 Base Peak m/z=
 100.00000-1500.00000 F:
 FTMS + p ESI Full ms
 [100.00-1500.00] MS
 Apotteri_HDX

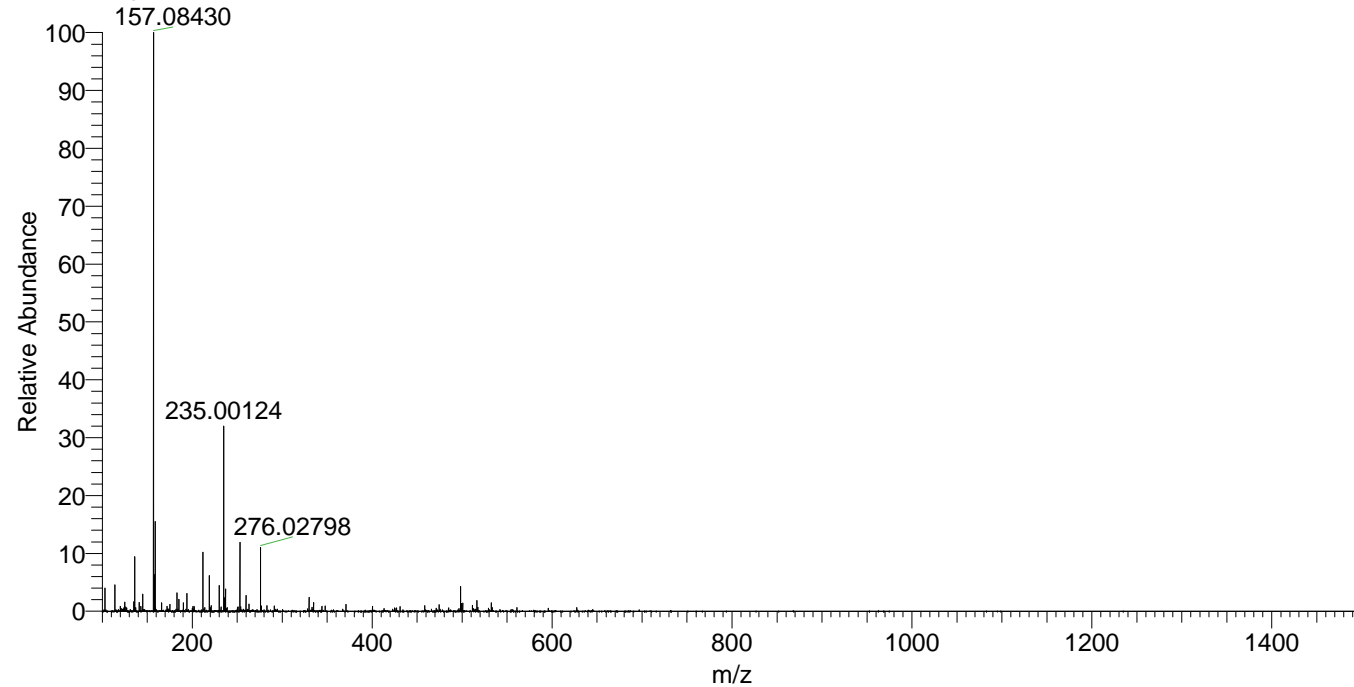
NL: 1.30E6
 Base Peak m/z=
 498.41241-498.41739 F:
 FTMS + p ESI Full ms
 [100.00-1500.00] MS
 Apotteri_HDX

NL: 2.27E5
 Base Peak m/z=
 250.21325-250.21575 F:
 FTMS + p ESI Full ms
 [100.00-1500.00] MS
 Apotteri_HDX

Apotteri_HDX#1060 RT: 6.62
 T: FTMS + p ESI Full ms [100.00-1500.00]
 m/z = 498.00000-499.00000

m/z	Intensity	Relative	Delta (ppm)	Composition
498.41675	1250273.8	100.00	-1.41	C ₂₆ H ₄₄ ² H ₅ O ₃ N ₆
			1.70	C ₂₆ H ₄₂ ² H ₆ O ₃ N ₆
			-4.51	C ₂₆ H ₄₆ ² H ₄ O ₃ N ₆
			4.81	C ₂₆ H ₄₀ ² H ₇ O ₃ N ₆

Apotteri_HDX #1060 RT: 6.62 AV: 1 NL: 2.85E7
 T: FTMS + p ESI Full ms [100.00-1500.00]



Apotteri_HDX #1060 RT: 6.62 AV: 1 NL: 1.21E6
 T: FTMS + p ESI Full ms [100.00-1500.00]

