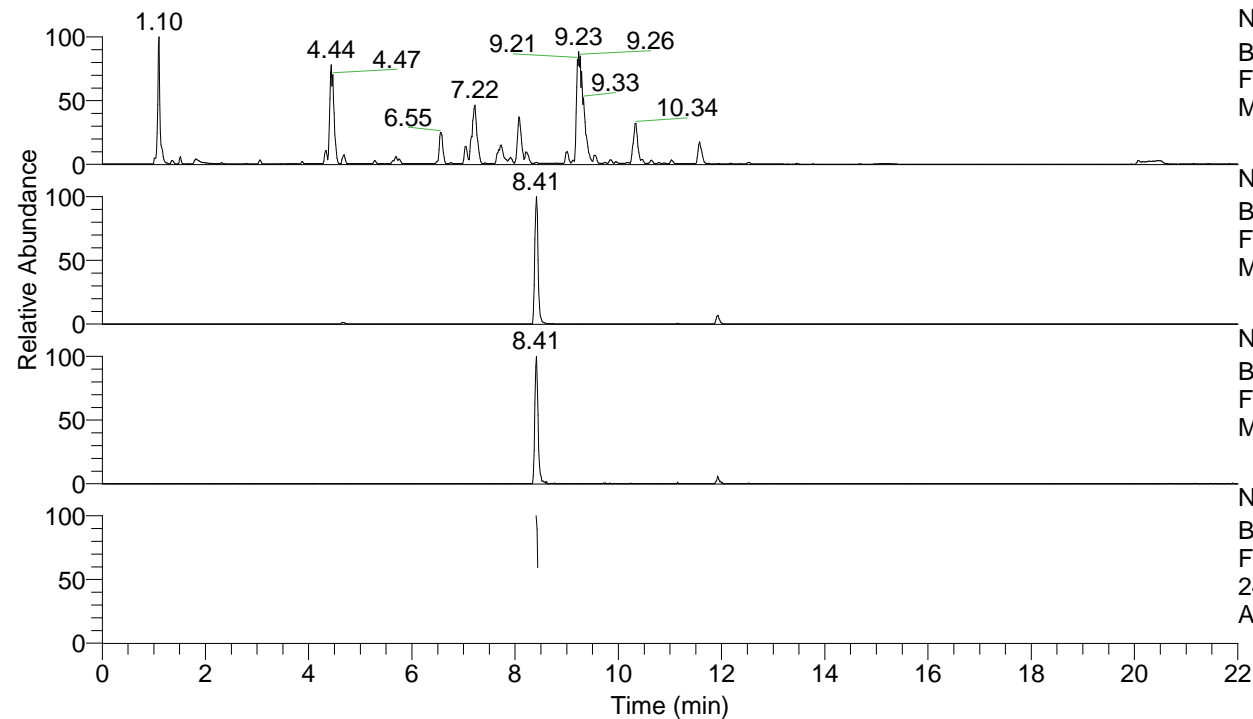


RT: 0.00 - 22.00



NL: 1.25E8  
 Base Peak m/z= 100.00000-1500.00000 F:  
 FTMS + p ESI Full ms [100.00-1500.00]  
 MS Apotteri

NL: 2.08E6  
 Base Peak m/z= 491.36850-491.37342 F:  
 FTMS + p ESI Full ms [100.00-1500.00]  
 MS Apotteri

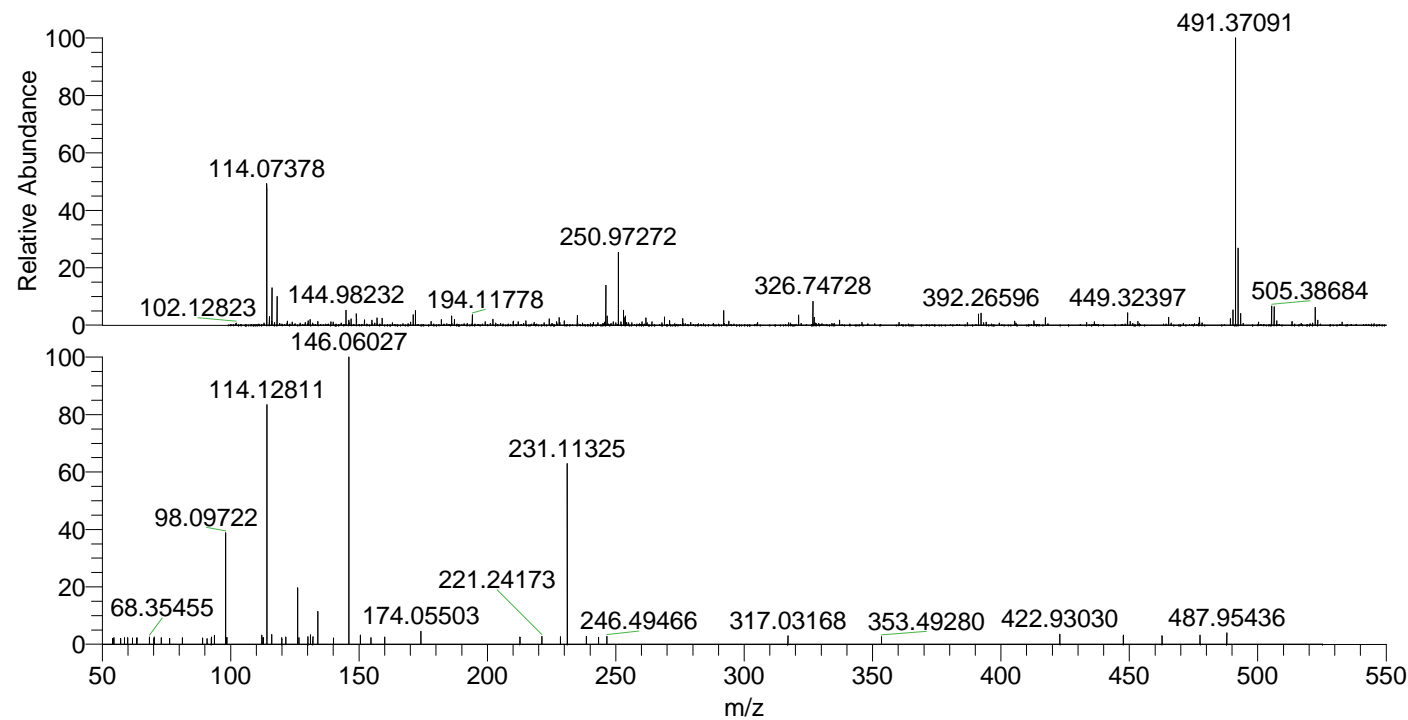
NL: 2.96E5  
 Base Peak m/z= 246.18816-246.19062 F:  
 FTMS + p ESI Full ms [100.00-1500.00]  
 MS Apotteri

NL: 4.78E4  
 Base Peak m/z= 50.00000-1500.00000 F:  
 FTMS + p ESI d Full ms2  
 246.19@hcd35.00 [50.00-520.00] MS  
 Apotteri

Apotteri#3377-3390 RT: 8.41-8.44 AV: 3

F: FTMS + p ESI d Full ms2 246.19 ...  
 m/z= 50.00000-1000.00000

m/z	Intensity	Relative
54.04883	800.2	2.06
54.57072	904.0	2.33
57.10954	786.0	2.02
58.66558	885.8	2.28
59.92619	872.9	2.25
61.76014	855.6	2.20
63.41023	807.4	2.08
63.52106	860.4	2.22
68.35455	945.0	2.43
70.12524	809.5	2.08
70.26293	995.8	2.56
72.97809	866.3	2.23
76.20259	807.7	2.08
81.25167	857.4	2.21
89.09714	832.2	2.14
90.80404	752.6	1.94
92.50840	966.4	2.49
93.65238	1157.1	2.98
98.09722	14880.8	38.33
98.47388	843.1	2.17
98.52738	925.8	2.38
112.11302	1230.2	3.17
112.59070	935.6	2.41
112.79095	864.7	2.23
114.12811	31968.9	82.34
115.96047	1295.7	3.34
119.93106	875.8	2.26
121.44759	966.8	2.49
126.12823	7706.6	19.85
126.61595	873.9	2.25
130.14883	1022.8	2.63
131.11858	1299.2	3.35
132.02757	994.1	2.56
133.97050	4440.8	11.44
140.10872	837.0	2.16
146.06027	38826.3	100.00
150.52284	1225.6	3.16
154.62045	880.9	2.27
160.02557	973.1	2.51
174.05503	1722.1	4.44
212.67700	976.2	2.51
221.24173	1062.3	2.74
228.42079	1011.2	2.60
231.09377	1101.4	2.84
231.11325	24025.6	61.88
238.55424	1052.4	2.71
243.30862	935.1	2.41
246.49466	1085.7	2.80
317.03168	1164.0	3.00
353.49280	992.3	2.56
422.93030	1375.6	3.54
447.66429	1218.2	3.14
462.73765	1156.9	2.98
477.52819	1219.9	3.14
487.95436	1501.0	3.87



NL: 2.05E6  
 Apotteri#3379 RT: 8.41  
 AV: 1 T: FTMS + p ESI  
 Full ms [100.00-1500.00]

NL: 3.82E4  
 Apotteri#3372-3391 RT:  
 8.41-8.44 AV: 3 F: FTMS  
 + p ESI d Full ms2  
 246.19@hcd35.00  
 [50.00-520.00]