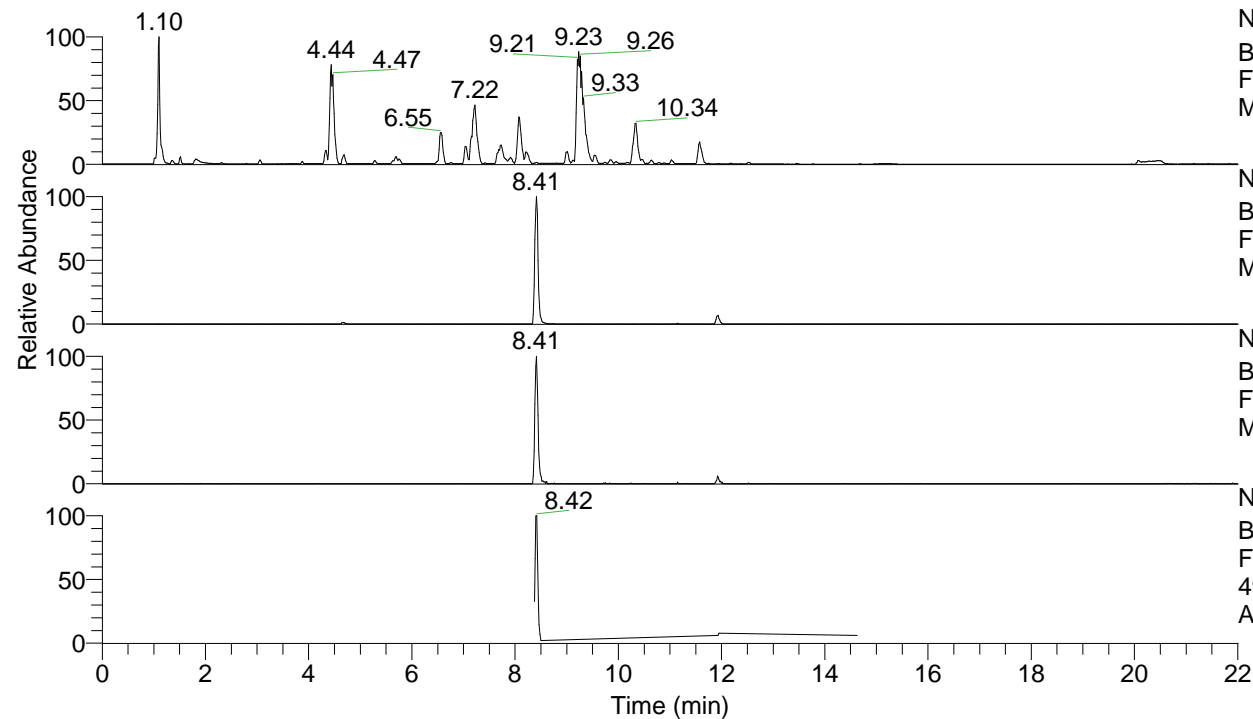


RT: 0.00 - 22.00



NL: 1.25E8
 Base Peak m/z= 100.00000-1500.00000 F:
 FTMS + p ESI Full ms [100.00-1500.00]
 MS Apotteri

NL: 2.08E6
 Base Peak m/z= 491.36850-491.37342 F:
 FTMS + p ESI Full ms [100.00-1500.00]
 MS Apotteri

NL: 2.96E5
 Base Peak m/z= 246.18816-246.19062 F:
 FTMS + p ESI Full ms [100.00-1500.00]
 MS Apotteri

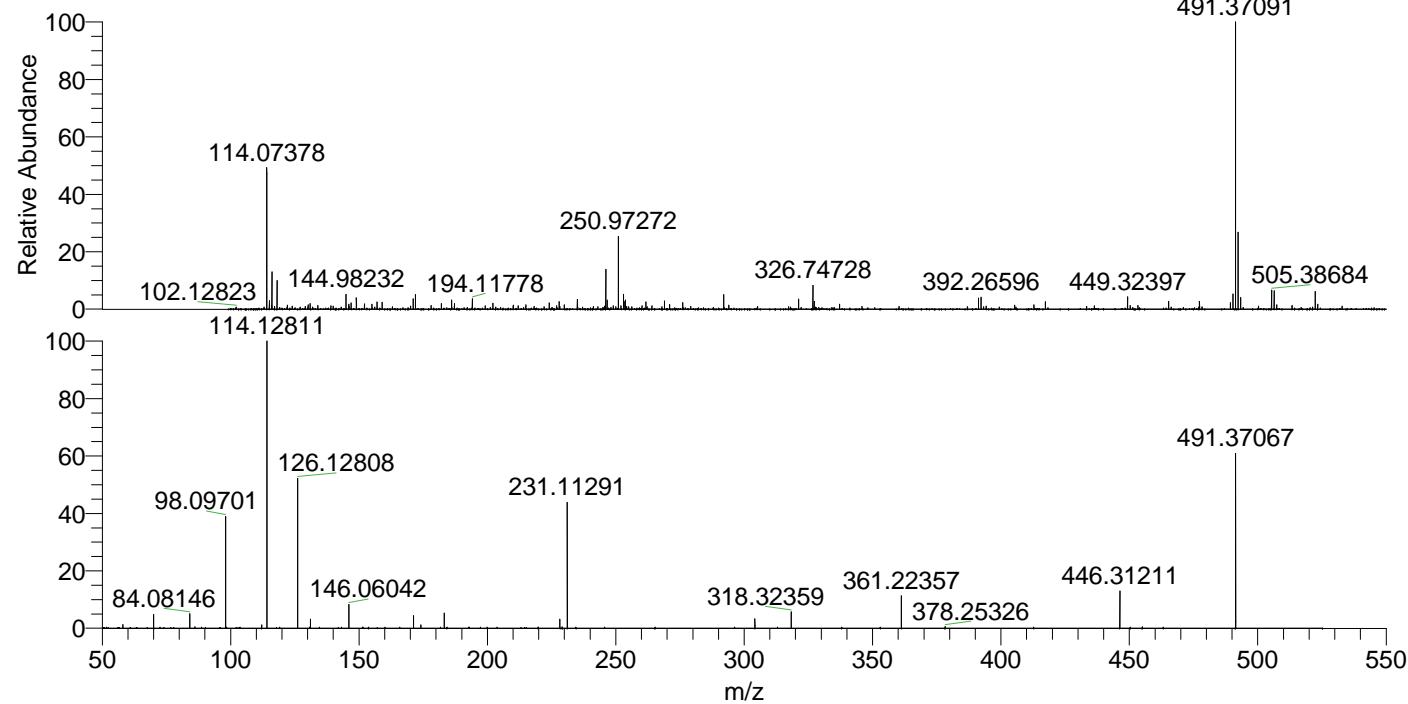
NL: 3.16E5
 Base Peak m/z= 50.00000-1500.00000 F:
 FTMS + p ESI d Full ms2
 491.33@hcd35.00 [50.00-520.00] MS
 Apotteri

Apotteri#3364-3392 RT: 8.38-8.45 AV: 6

F: FTMS + p ESI d Full ms2 491.33 ...

m/z= 50.00000-1000.00000

m/z	Intensity	Relative
58.06600	2550.3	1.28
70.06599	10011.0	5.02
84.08146	10590.1	5.31
98.09701	77666.0	38.94
112.11301	2498.4	1.25
114.12811	199440.7	100.00
126.12808	107444.4	53.87
131.11795	6420.0	3.22
146.06042	16615.7	8.33
171.18610	8755.6	4.39
174.05543	2396.4	1.20
183.18596	10706.7	5.37
228.24490	6374.0	3.20
229.12238	1019.3	0.51
231.11291	87959.7	44.10
304.16577	6806.7	3.41
318.32359	11570.0	5.80
361.22357	22704.7	11.38
378.25326	1138.0	0.57
446.31211	26506.0	13.29
455.02823	998.2	0.50
491.37067	121435.0	60.89



NL: 2.05E6
 Apotteri#3379 RT: 8.41
 AV: 1 T: FTMS + p ESI
 Full ms [100.00-1500.00]

NL: 1.99E5
 Apotteri#3362-3392 RT:
 8.38-8.45 AV: 6 F: FTMS
 + p ESI d Full ms2
 491.33@hcd35.00
 [50.00-520.00]