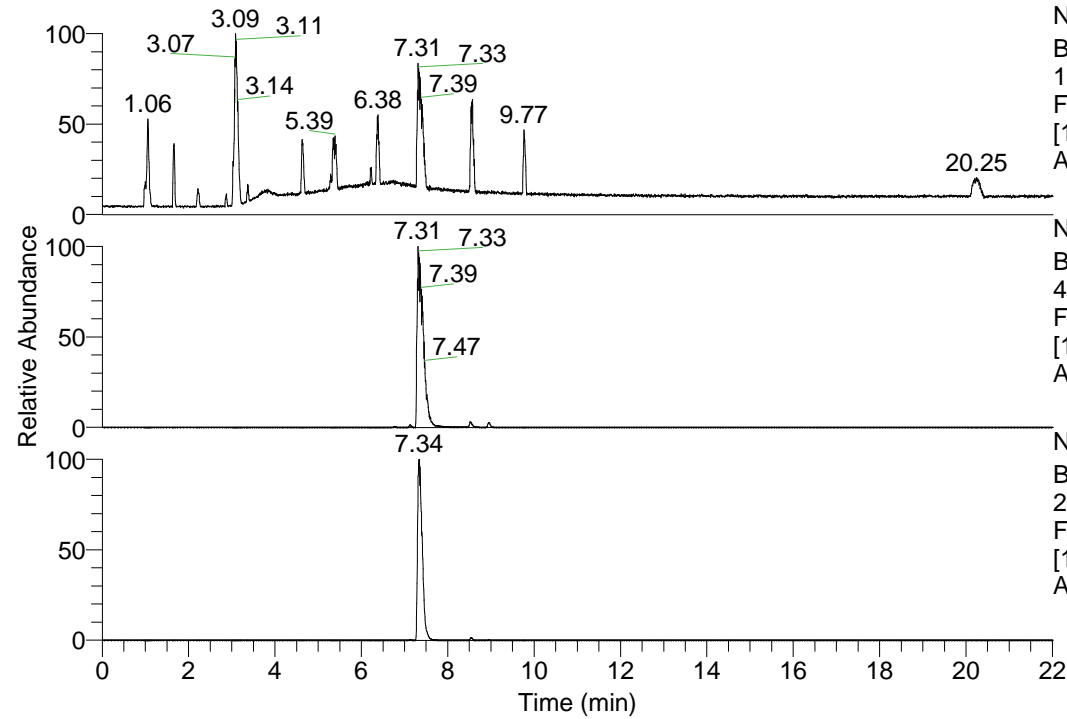


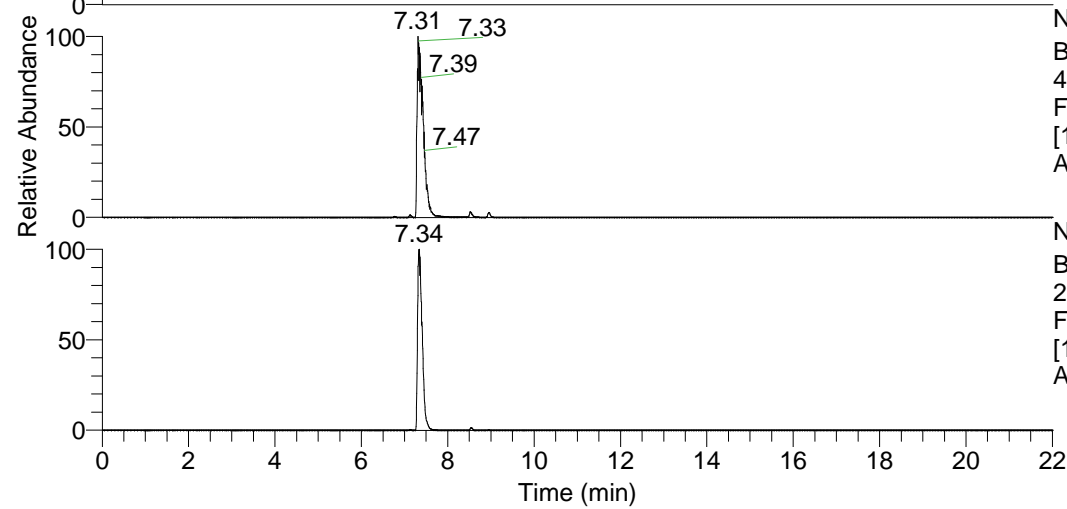
RT: 0.00 - 22.01



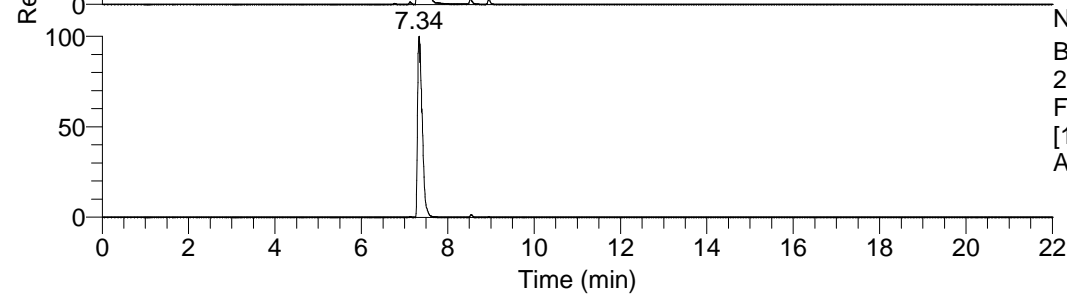
NL: 1.69E8  
 Base Peak m/z=  
 100.00000-1500.00000 F:  
 FTMS + p ESI Full ms  
 [100.00-1500.00] MS  
 Apotteri\_HDX

Apotteri\_HDX#1174 RT: 7.31  
 T: FTMS + p ESI Full ms [100.00-1500.00]  
 m/z= 499.00000-500.00000

m/z	Intensity	Relative	Delta (ppm)	Composition
499.44504	106927216.0	100.00	1.20	C <sub>26</sub> H <sub>41</sub> <sup>2</sup> H <sub>8</sub> O <sub>2</sub> N <sub>7</sub>
			-1.90	C <sub>26</sub> H <sub>43</sub> <sup>2</sup> H <sub>7</sub> O <sub>2</sub> N <sub>7</sub>
			4.30	C <sub>26</sub> H <sub>39</sub> <sup>2</sup> H <sub>9</sub> O <sub>2</sub> N <sub>7</sub>

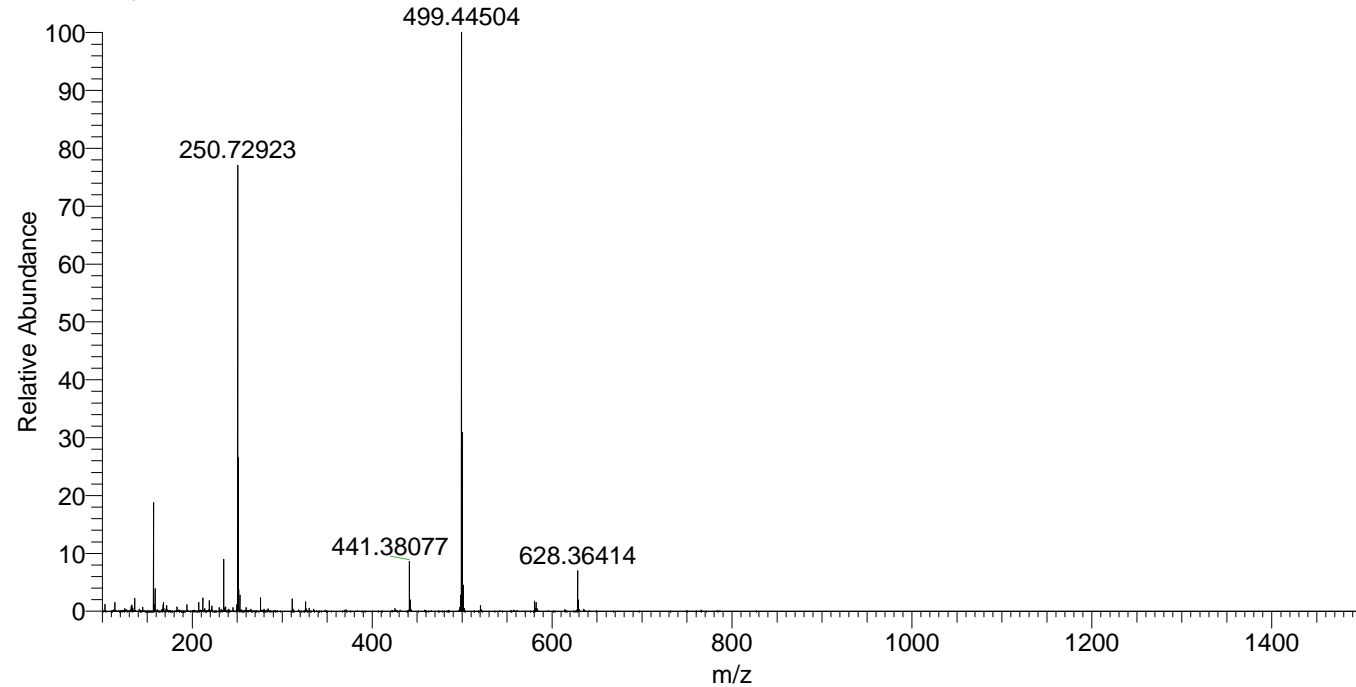


NL: 1.41E8  
 Base Peak m/z=  
 499.44094-499.44594 F:  
 FTMS + p ESI Full ms  
 [100.00-1500.00] MS  
 Apotteri\_HDX



NL: 1.10E8  
 Base Peak m/z=  
 250.72752-250.73002 F:  
 FTMS + p ESI Full ms  
 [100.00-1500.00] MS  
 Apotteri\_HDX

Apotteri\_HDX #1174 RT: 7.31 AV: 1 NL: 1.04E8  
 T: FTMS + p ESI Full ms [100.00-1500.00]



Apotteri\_HDX #1174 RT: 7.31 AV: 1 NL: 1.04E8  
 T: FTMS + p ESI Full ms [100.00-1500.00]

