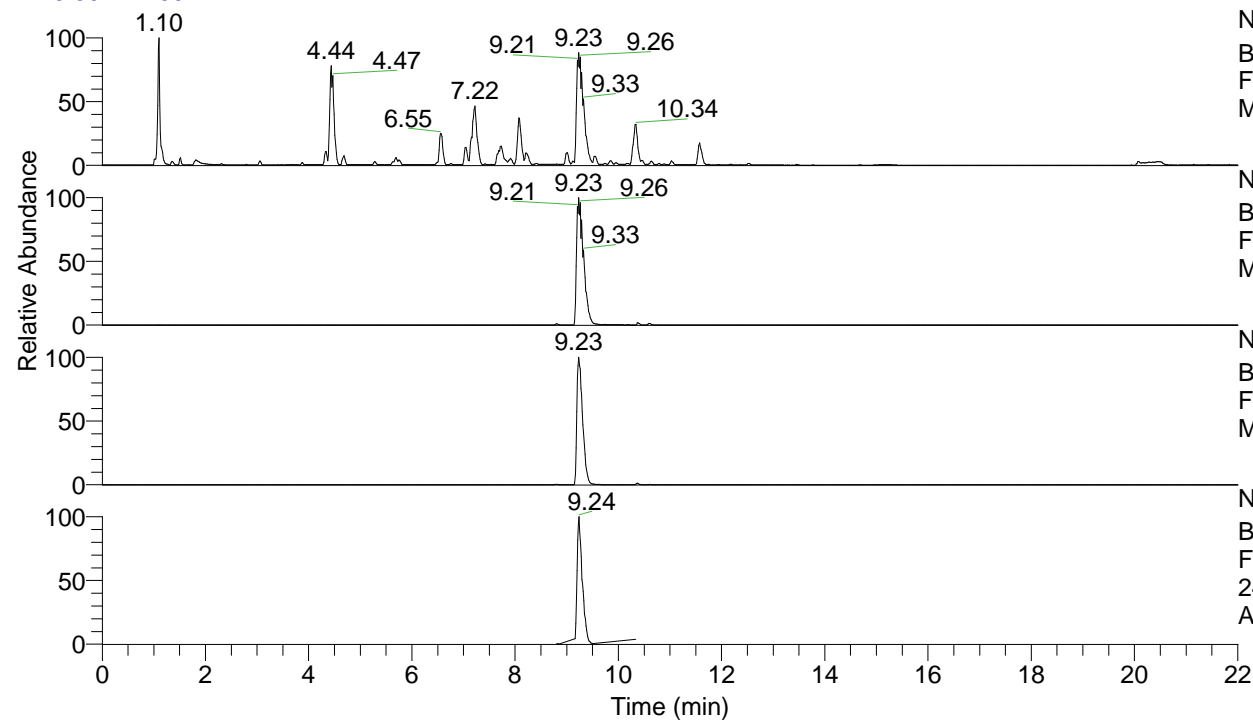


RT: 0.00 - 22.00



NL: 1.25E8
 Base Peak m/z= 100.00000-1500.00000 F:
 FTMS + p ESI Full ms [100.00-1500.00]
 MS Apotteri

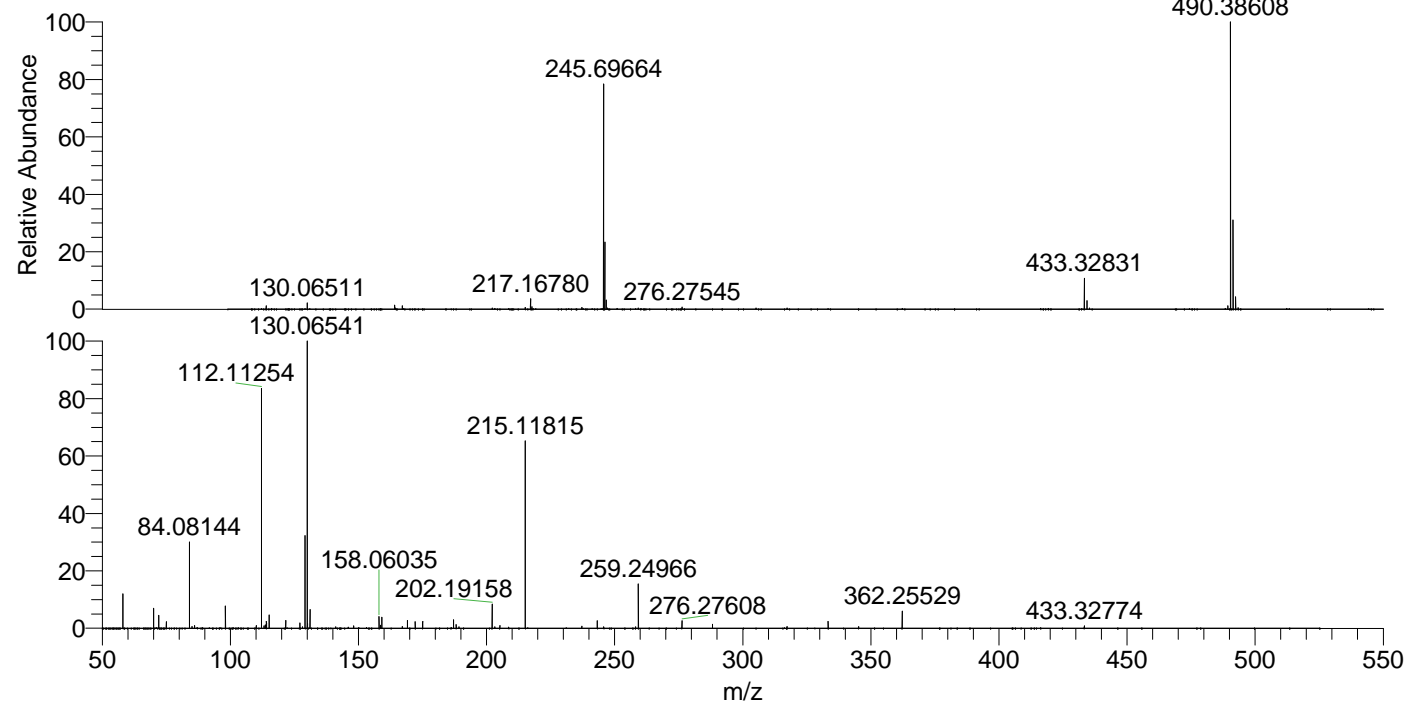
NL: 1.11E8
 Base Peak m/z= 490.38450-490.38940 F:
 FTMS + p ESI Full ms [100.00-1500.00]
 MS Apotteri

NL: 8.60E7
 Base Peak m/z= 245.69616-245.69862 F:
 FTMS + p ESI Full ms [100.00-1500.00]
 MS Apotteri

NL: 1.41E7
 Base Peak m/z= 50.00000-1500.00000 F:
 FTMS + p ESI d Full ms2
 245.70@hcd35.00 [50.00-520.00] MS
 Apotteri

Apotteri#3677-3777 RT: 9.16-9.39 AV: 18
 F: FTMS + p ESI d Full ms2 245.70@h ...
 m/z= 50.00000-1000.00000

m/z	Intensity	Relative
58.06601	766781.6	12.11
70.06591	441047.3	6.96
72.08159	286592.3	4.53
75.09247	143899.2	2.27
84.08144	1921662.6	30.35
85.07665	39223.8	0.62
86.06078	59597.0	0.94
98.09705	487920.9	7.71
110.09699	61758.7	0.98
112.11254	5218780.5	82.41
113.10788	52172.6	0.82
113.61810	74617.2	1.18
114.09187	151724.9	2.40
115.12342	286089.5	4.52
121.61528	169898.3	2.68
127.12332	118124.9	1.87
129.13893	2035467.1	32.14
130.06541	6332421.5	100.00
130.12850	108270.3	1.71
131.11804	413077.4	6.52
141.13860	33417.1	0.53
148.14463	55690.1	0.88
158.06035	258272.6	4.08
158.65756	66959.5	1.06
159.09181	237842.6	3.76
167.17042	35694.4	0.56
169.17010	176677.4	2.79
172.18105	144026.6	2.27
175.06312	151341.2	2.39
187.08660	188821.7	2.98
188.17611	79809.0	1.26
202.19158	537636.0	8.49
205.20248	62750.2	0.99
215.11815	4082550.5	64.47
237.18372	45067.8	0.71
243.25470	166924.5	2.64
245.69667	32824.1	0.52
258.16032	34750.2	0.55
259.24966	965954.2	15.25
276.27608	163884.3	2.59
288.17042	87760.9	1.39
317.33836	35211.0	0.56
333.33389	156535.2	2.47
345.22820	32277.5	0.51
362.25529	370725.0	5.85
433.32774	51116.0	0.81



NL: 1.06E8
 Apotteri#3709 RT: 9.23
 AV: 1 T: FTMS + p ESI
 Full ms [100.00-1500.00]

NL: 6.25E6
 Apotteri#3653-3780 RT:
 9.16-9.39 AV: 18 F:
 FTMS + p ESI d Full ms2
 245.70@hcd35.00
 [50.00-520.00]