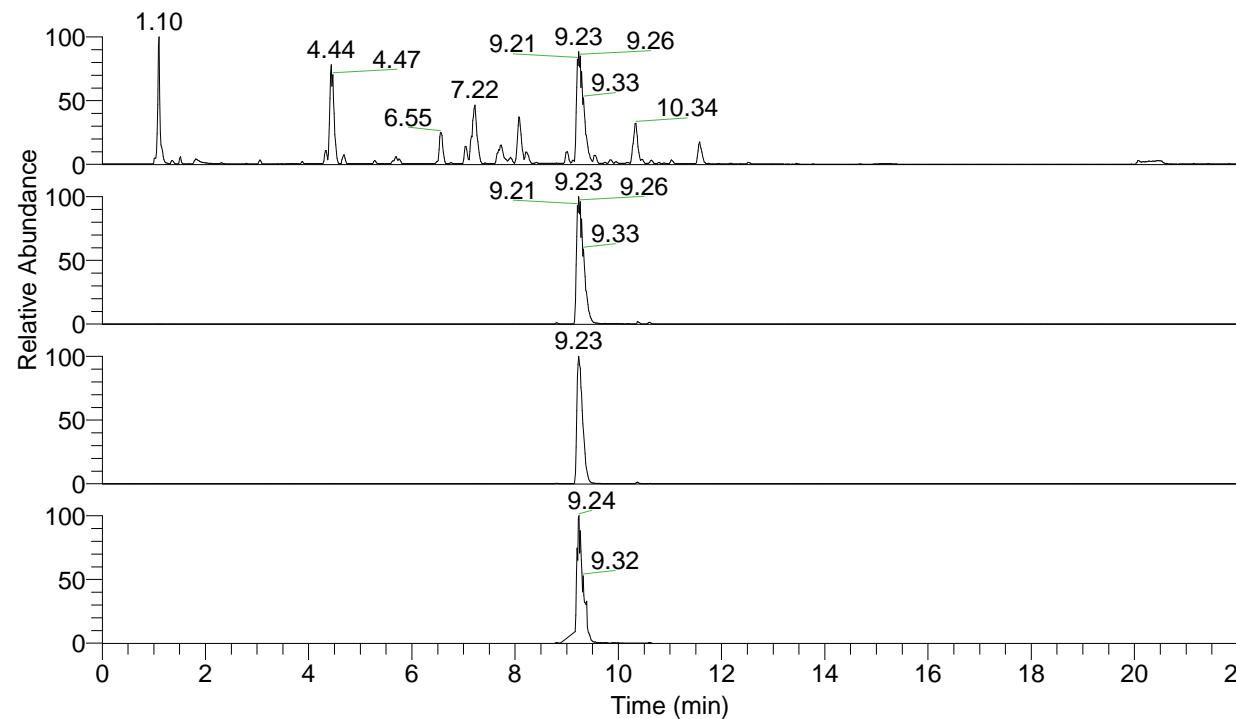


RT: 0.00 - 22.00



NL: 1.25E8
 Base Peak m/z= 100.00000-1500.00000 F:
 FTMS + p ESI Full ms [100.00-1500.00]
 MS Apotteri

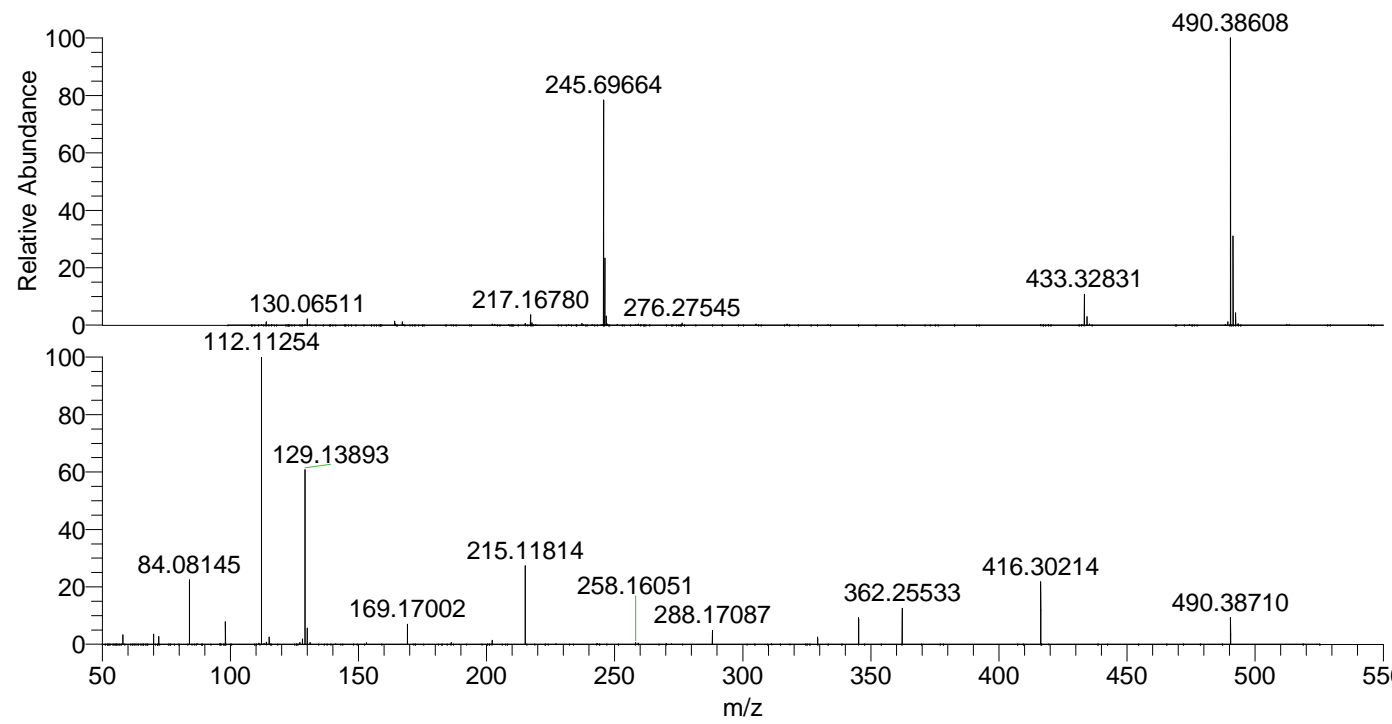
NL: 1.11E8
 Base Peak m/z= 490.38450-490.38940 F:
 FTMS + p ESI Full ms [100.00-1500.00]
 MS Apotteri

NL: 8.60E7
 Base Peak m/z= 245.69616-245.69862 F:
 FTMS + p ESI Full ms [100.00-1500.00]
 MS Apotteri

NL: 2.16E7
 Base Peak m/z= 50.00000-1500.00000 F:
 FTMS + p ESI d Full ms2
 490.39@hcd35.00 [50.00-520.00] MS
 Apotteri

Apotteri#3676-3758 RT: 9.16-9.34 AV: 15
 F: FTMS + p ESI d Full ms2 490.39@hc ...
 m/z= 50.00000-1000.00000

m/z	Intensity	Relative
58.06600	400352.5	3.39
70.06592	421289.3	3.57
72.08157	324924.3	2.75
84.08145	270709.0	22.91
98.09703	935868.6	7.92
112.11254	11817189.0	100.00
114.09187	85559.8	0.72
115.12342	294059.7	2.49
127.12333	70951.2	0.60
128.10726	214610.1	1.82
129.13893	7254722.0	61.39
130.06538	682026.7	5.77
131.11826	75459.3	0.64
169.17002	855668.3	7.24
186.19656	68519.4	0.58
202.19142	162868.0	1.38
215.11814	3243060.3	27.44
258.16052	76007.7	0.64
288.17087	568353.3	4.81
329.23354	300976.0	2.55
345.22835	1116812.1	9.45
362.25533	1485215.4	12.57
416.30214	2577009.8	21.81
490.38710	1111414.5	9.41



NL: 1.06E8
 Apotteri#3709 RT: 9.23
 AV: 1 T: FTMS + p ESI
 Full ms [100.00-1500.00]

NL: 1.25E7
 Apotteri#3679-3761 RT:
 9.17-9.34 AV: 14 F:
 FTMS + p ESI d Full ms2
 490.39@hcd35.00
 [50.00-520.00]