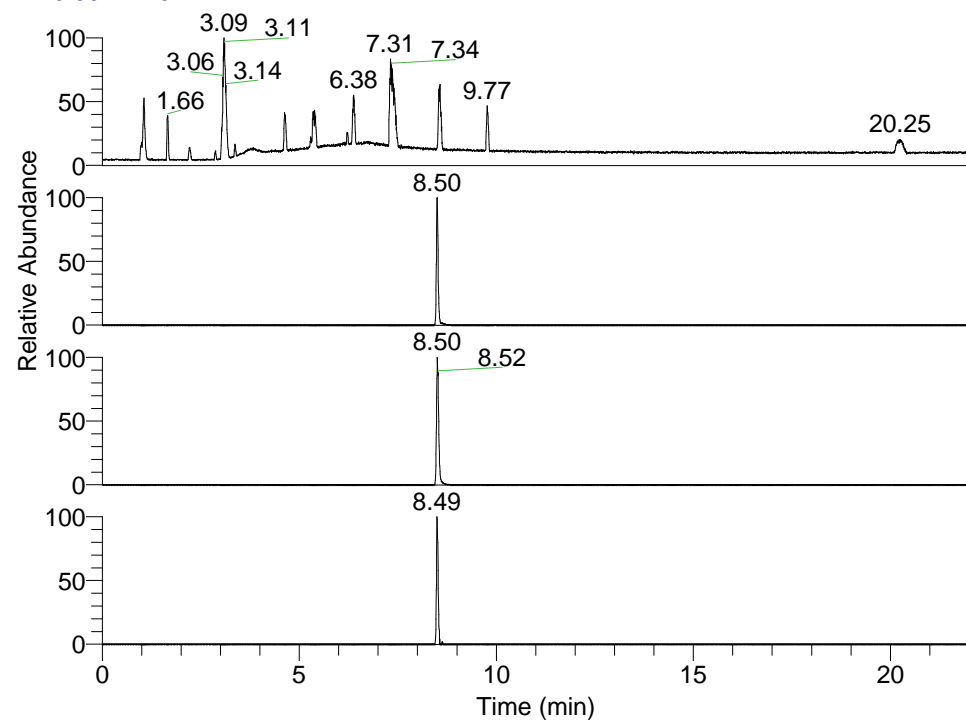


RT: 0.00 - 22.01



NL: 1.69E8  
 Base Peak m/z=  
 100.00000-1500.00000 F: FTMS + p  
 ESI Full ms [100.00-1500.00] MS  
 Apotteri\_HDX

NL: 1.40E7  
 Base Peak m/z=  
 494.42061-494.42555 F: FTMS + p  
 ESI Full ms [100.00-1500.00] MS  
 Apotteri\_HDX

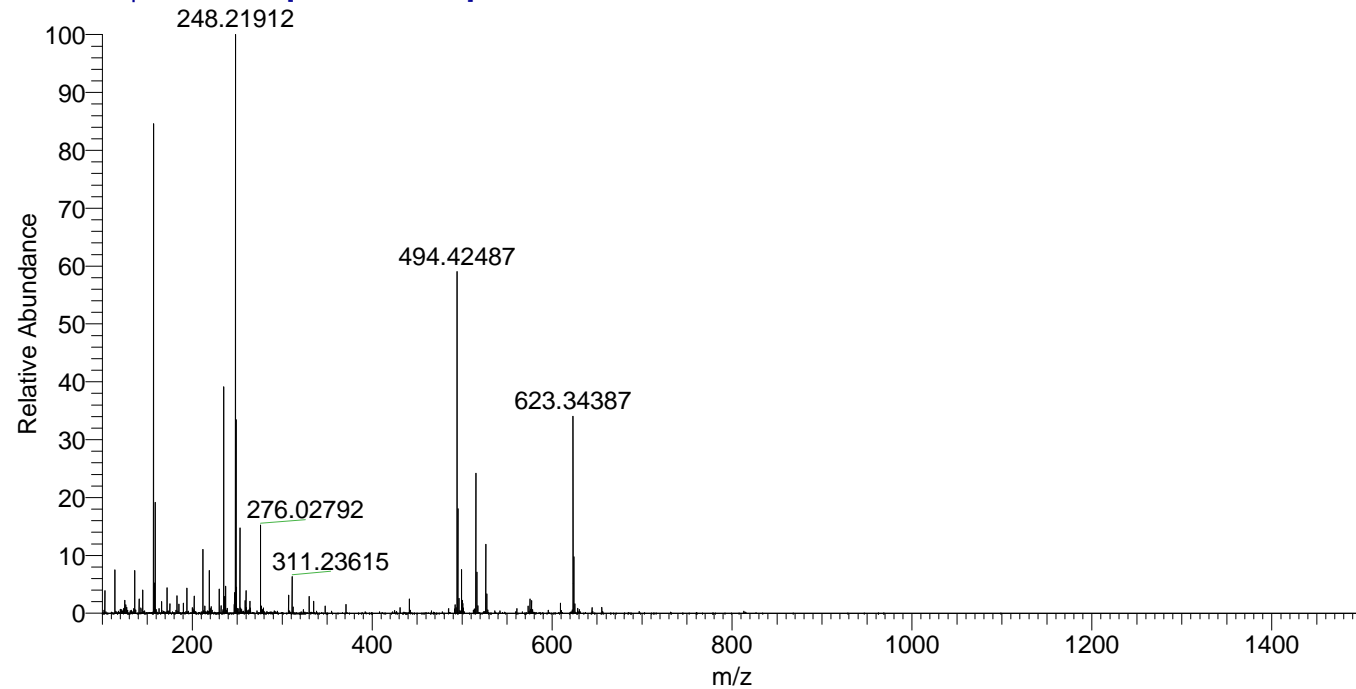
NL: 2.70E7  
 Base Peak m/z=  
 248.21735-248.21983 F: FTMS + p  
 ESI Full ms [100.00-1500.00] MS  
 Apotteri\_HDX

NL: 4.28E5  
 Base Peak m/z=  
 609.41917-609.42527 F: FTMS + p  
 ESI Full ms [100.00-1500.00] MS  
 Apotteri\_HDX

Apotteri\_HDX#1375 RT: 8.50  
 T: FTMS + p ESI Full ms [100.00-1500.00]  
 m/z= 494.00000-495.00000

m/z	Intensity	Relative	Delta (ppm)	Composition
494.42487	13838566.0	100.00	-1.55	C <sub>27</sub> H <sub>48</sub> <sup>2</sup> H <sub>3</sub> O <sub>2</sub> N <sub>6</sub>
			1.58	C <sub>27</sub> H <sub>46</sub> <sup>2</sup> H <sub>4</sub> O <sub>2</sub> N <sub>6</sub>
			-4.68	C <sub>27</sub> H <sub>50</sub> <sup>2</sup> H <sub>2</sub> O <sub>2</sub> N <sub>6</sub>
			4.71	C <sub>27</sub> H <sub>44</sub> <sup>2</sup> H <sub>5</sub> O <sub>2</sub> N <sub>6</sub>

Apotteri\_HDX #1375 RT: 8.50 AV: 1 NL: 2.33E7  
 T: FTMS + p ESI Full ms [100.00-1500.00]



Apotteri\_HDX #1375 RT: 8.50 AV: 1 NL: 1.37E7  
 T: FTMS + p ESI Full ms [100.00-1500.00]

