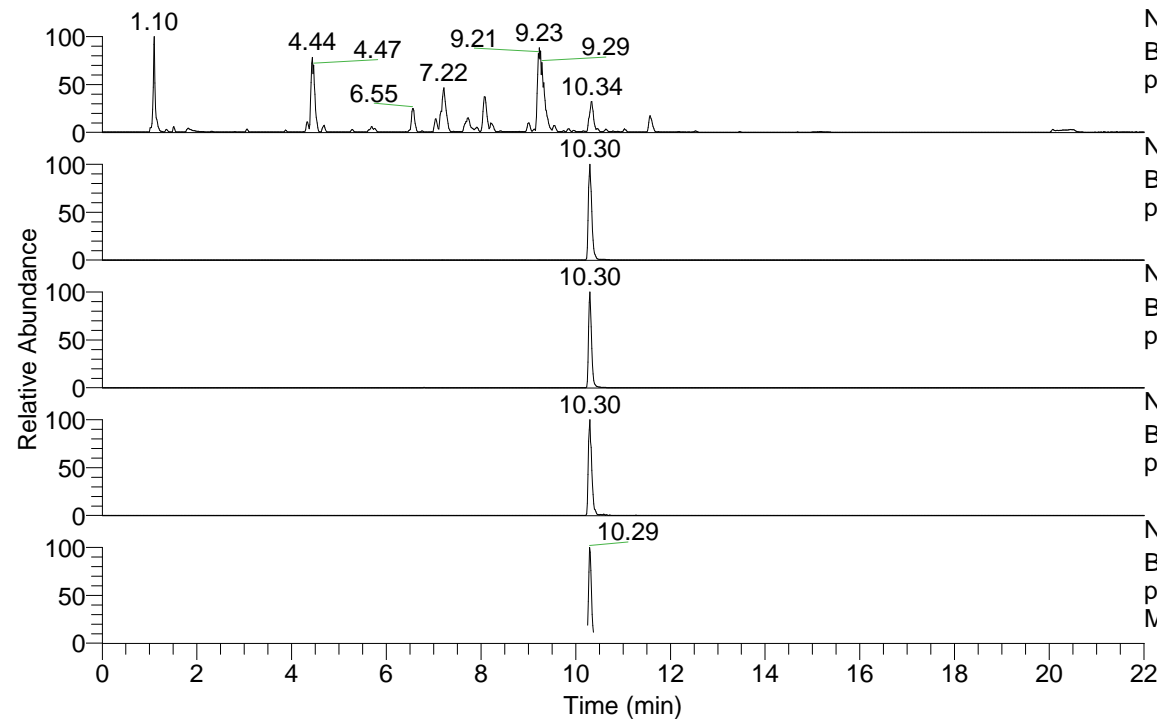


RT: 0.00 - 22.00



NL: 1.25E8
 Base Peak m/z= 100.00000-1500.00000 F: FTMS +
 p ESI Full ms [100.00-1500.00] MS Apotteri

NL: 2.32E7
 Base Peak m/z= 489.38925-489.39415 F: FTMS +
 p ESI Full ms [100.00-1500.00] MS Apotteri

NL: 1.20E7
 Base Peak m/z= 245.19853-245.20099 F: FTMS +
 p ESI Full ms [100.00-1500.00] MS Apotteri

NL: 8.93E5
 Base Peak m/z= 603.38154-603.38758 F: FTMS +
 p ESI Full ms [100.00-1500.00] MS Apotteri

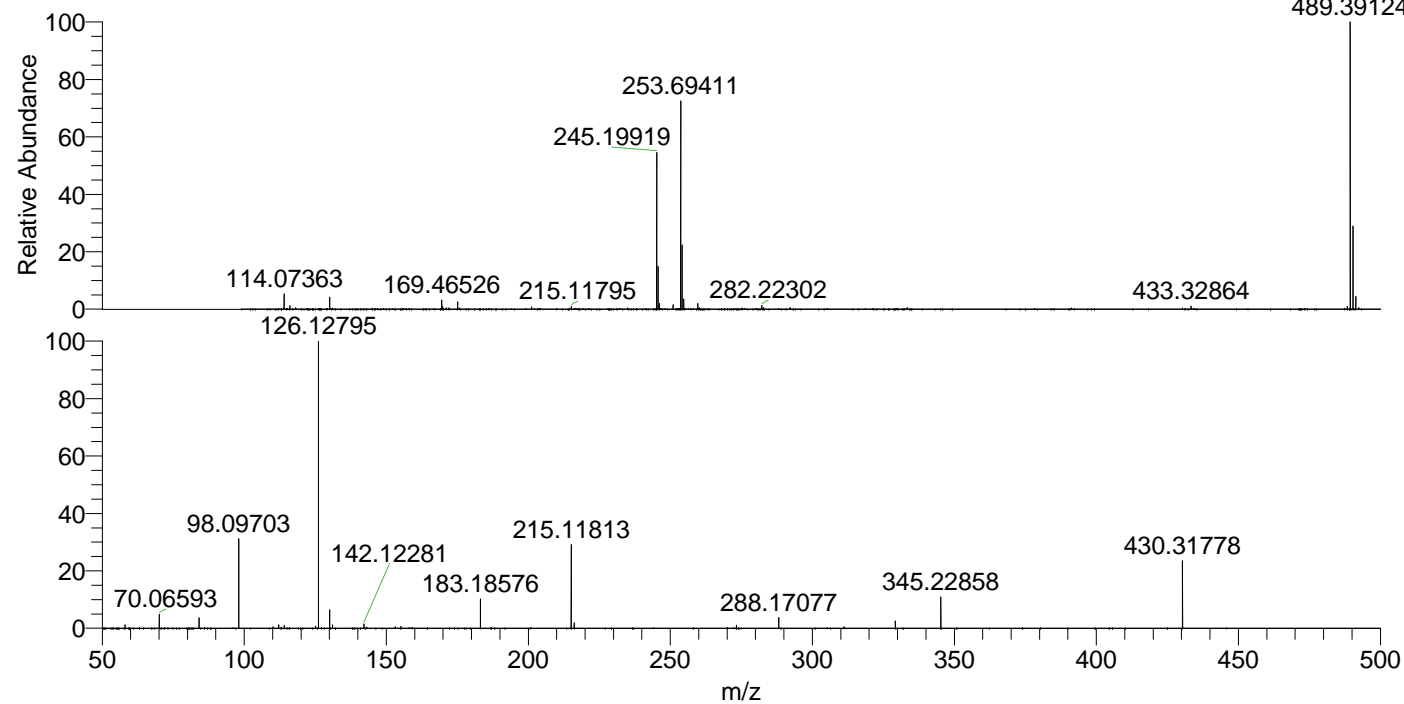
NL: 1.44E6
 Base Peak m/z= 50.00000-1500.00000 F: FTMS +
 p ESI d Full ms2 245.20@hcd35.00 [50.00-520.00]
 MS Apotteri

Apotteri#4121-4169 RT: 10.25-10.36

F: FTMS + p ESI d Full ms2 245.20 ...

m/z= 50.00000-1000.00000

m/z	Intensity	Relative
58.06602	70881.7	9.14
60.08165	7016.2	0.91
70.06595	98827.9	12.75
72.08158	12963.2	1.67
84.08144	56695.5	7.31
85.07667	4453.6	0.57
86.06072	12506.4	1.61
86.09715	28540.1	3.68
93.10479	7188.0	0.93
98.09700	464737.2	59.96
112.11252	67102.9	8.66
113.10759	6687.8	0.86
114.09175	20683.6	2.67
115.12346	18805.6	2.43
121.63343	73424.7	9.47
126.12795	662216.3	85.43
130.06530	775132.4	100.00
131.11805	133379.4	17.21
143.15440	116070.8	14.97
145.17026	7933.9	1.02
146.06032	7813.7	1.01
158.06009	41866.1	5.40
159.09193	37236.8	4.80
166.67303	10471.9	1.35
171.18564	13245.1	1.71
172.18080	18529.6	2.39
175.06313	7900.7	1.02
175.08733	6091.6	0.79
183.18597	25801.5	3.33
187.08672	40140.4	5.18
188.17583	5272.4	0.68
215.11815	746477.9	96.30
216.20704	182729.8	23.57
245.19910	44387.3	5.73
257.27051	46459.5	5.99
273.26485	56778.3	7.32
288.17143	4020.0	0.52



489.39124 NL: 2.21E7
 Apotteri#4141 RT: 10.30
 AV: 1 T: FTMS + p ESI
 Full ms [100.00-1500.00]

NL: 3.07E6
 Apotteri#4118-4169 RT:
 10.25-10.36 AV: 9 F:
 FTMS + p ESI d Full ms2
 489.36@hcd35.00
 [50.00-515.00]