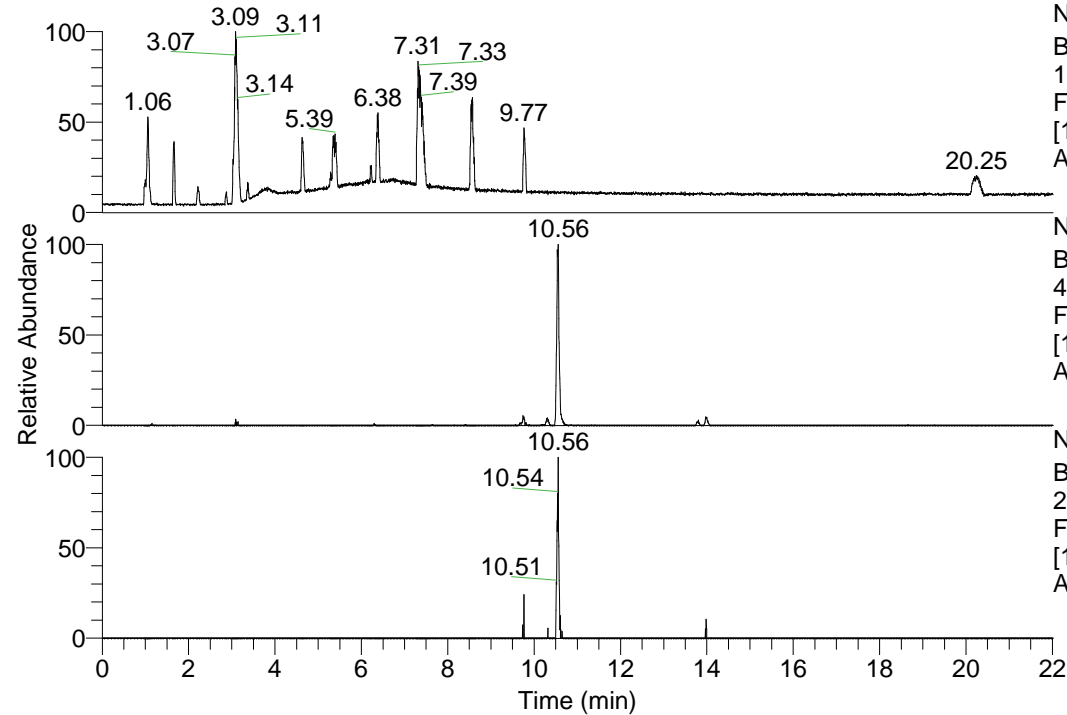


RT: 0.00 - 22.01



NL: 1.69E8
 Base Peak m/z=
 100.00000-1500.00000 F:
 FTMS + p ESI Full ms
 [100.00-1500.00] MS
 Apotteri_HDX

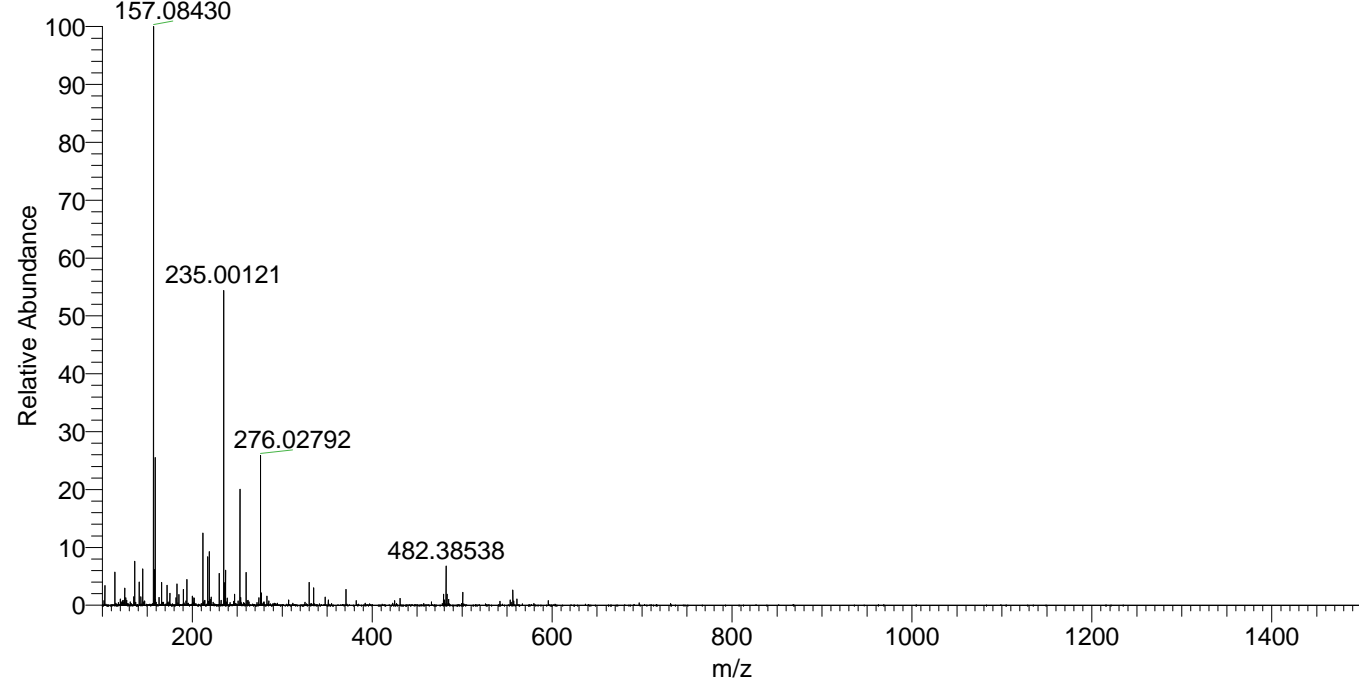
Apotteri_HDX#1714 RT: 10.56
 T: FTMS + p ESI Full ms [100.00-1500.00]
 m/z= 482.00000-483.00000

m/z	Intensity	Relative	Delta (ppm)	Composition
482.38538	1283041.8	100.00	-1.60	C ₂₅ H ₄₀ ² H ₅ O ₃ N ₆
			1.61	C ₂₅ H ₃₈ ² H ₆ O ₃ N ₆
			-4.81	C ₂₅ H ₄₂ ² H ₄ O ₃ N ₆
			4.82	C ₂₅ H ₃₆ ² H ₇ O ₃ N ₆

NL: 1.28E6
 Base Peak m/z=
 482.38119-482.38601 F:
 FTMS + p ESI Full ms
 [100.00-1500.00] MS
 Apotteri_HDX

NL: 8.78E4
 Base Peak m/z=
 242.19764-242.20006 F:
 FTMS + p ESI Full ms
 [100.00-1500.00] MS
 Apotteri_HDX

Apotteri_HDX #1714 RT: 10.56 AV: 1 NL: 1.88E7
 T: FTMS + p ESI Full ms [100.00-1500.00]



Apotteri_HDX #1714 RT: 10.56 AV: 1 NL: 1.27E6
 T: FTMS + p ESI Full ms [100.00-1500.00]

