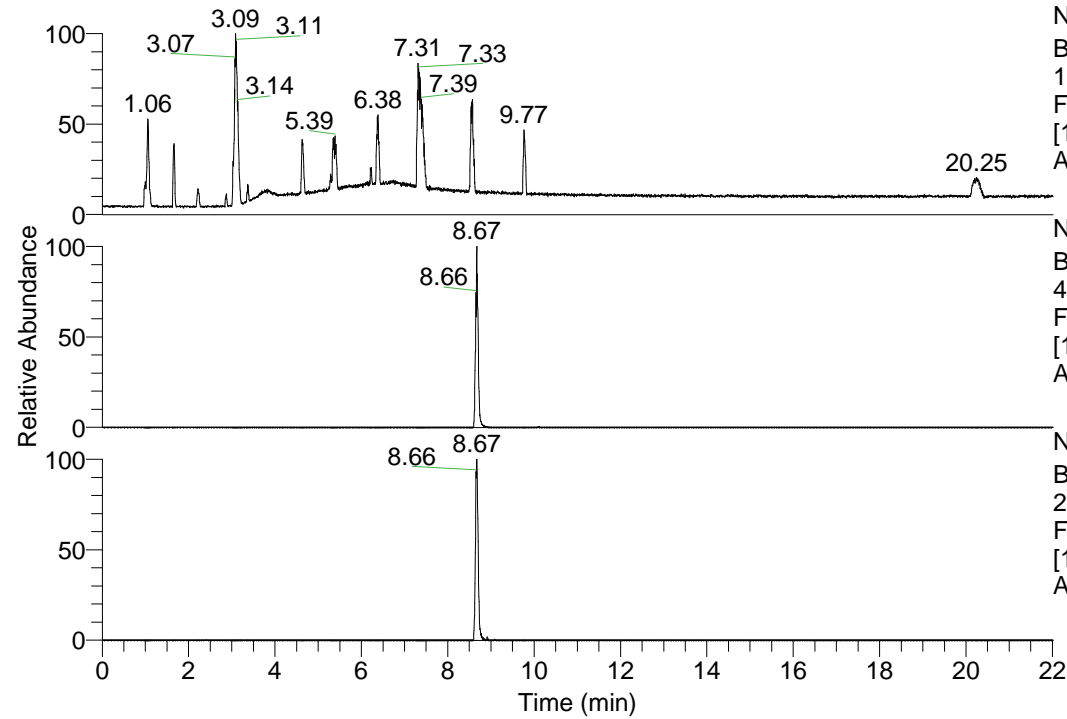


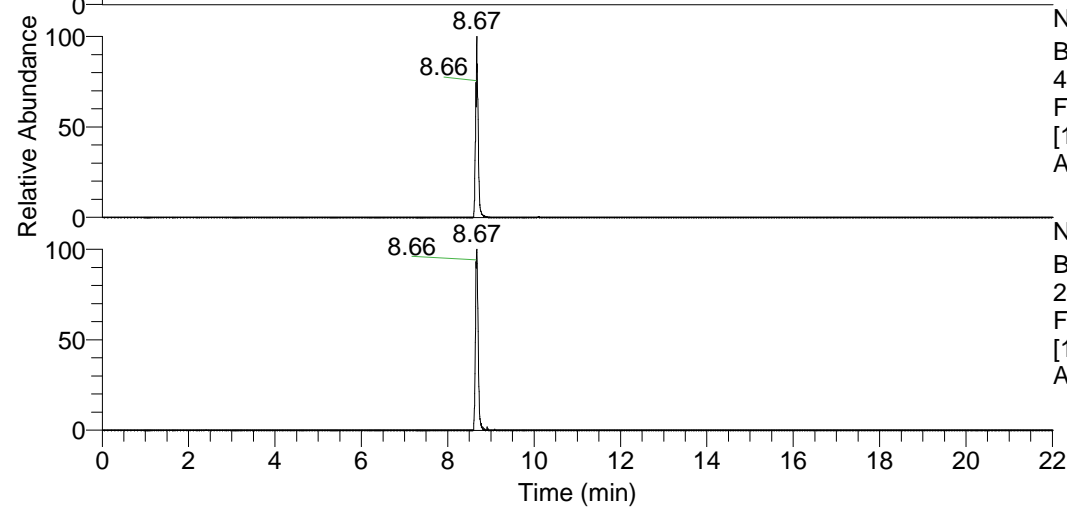
RT: 0.00 - 22.01



NL: 1.69E8  
 Base Peak m/z=  
 100.00000-1500.00000 F:  
 FTMS + p ESI Full ms  
 [100.00-1500.00] MS  
 Apotteri\_HDX

Apotteri\_HDX#1406 RT: 8.67  
 T: FTMS + p ESI Full ms [100.00-1500.00]  
 m/z= 481.00000-482.00000

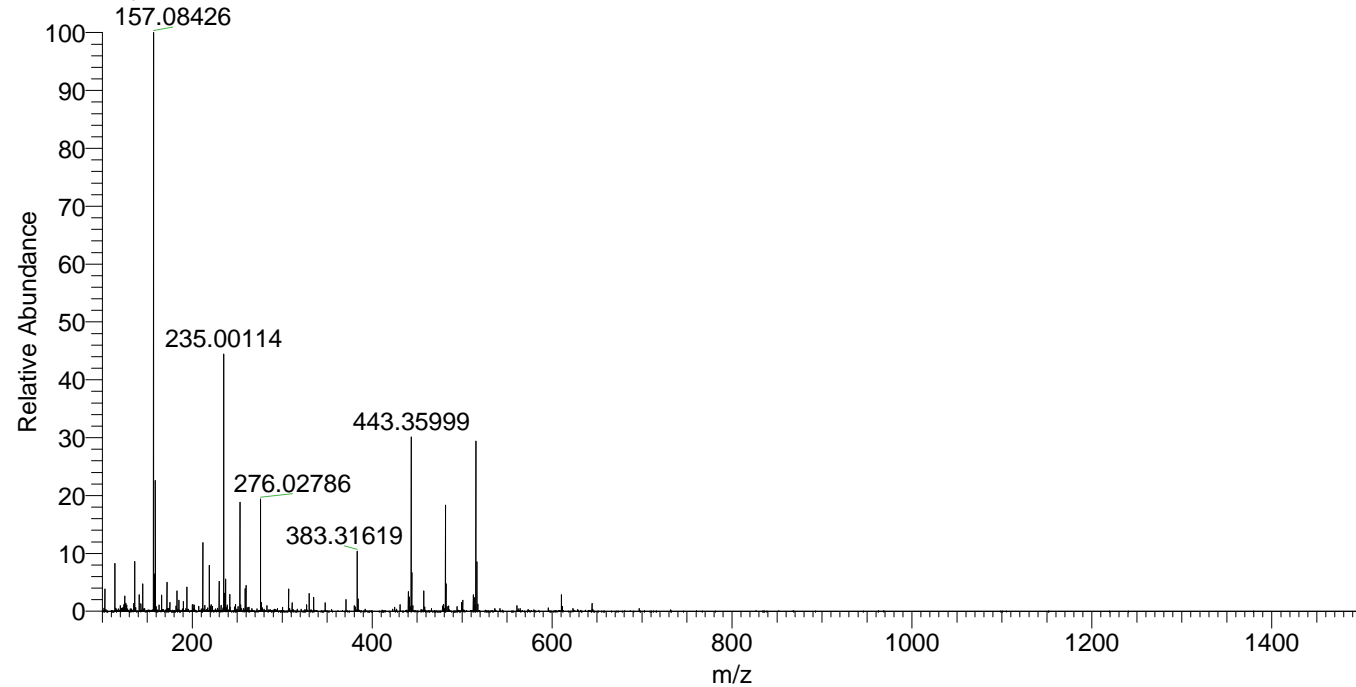
m/z	Intensity	Relative	Delta (ppm)	Composition
481.41531	4336535.0	100.00	1.25	C <sub>26</sub> H <sub>43</sub> <sup>2</sup> H <sub>5</sub> O <sub>2</sub> N <sub>6</sub>
			-1.96	C <sub>26</sub> H <sub>45</sub> <sup>2</sup> H <sub>4</sub> O <sub>2</sub> N <sub>6</sub>
			4.47	C <sub>26</sub> H <sub>41</sub> <sup>2</sup> H <sub>6</sub> O <sub>2</sub> N <sub>6</sub>



NL: 4.34E6  
 Base Peak m/z=  
 481.41130-481.41612 F:  
 FTMS + p ESI Full ms  
 [100.00-1500.00] MS  
 Apotteri\_HDX

NL: 6.85E5  
 Base Peak m/z=  
 241.71270-241.71512 F:  
 FTMS + p ESI Full ms  
 [100.00-1500.00] MS  
 Apotteri\_HDX

Apotteri\_HDX #1406 RT: 8.67 AV: 1 NL: 2.26E7  
 T: FTMS + p ESI Full ms [100.00-1500.00]



Apotteri\_HDX #1406 RT: 8.67 AV: 1 NL: 4.15E6  
 T: FTMS + p ESI Full ms [100.00-1500.00]

