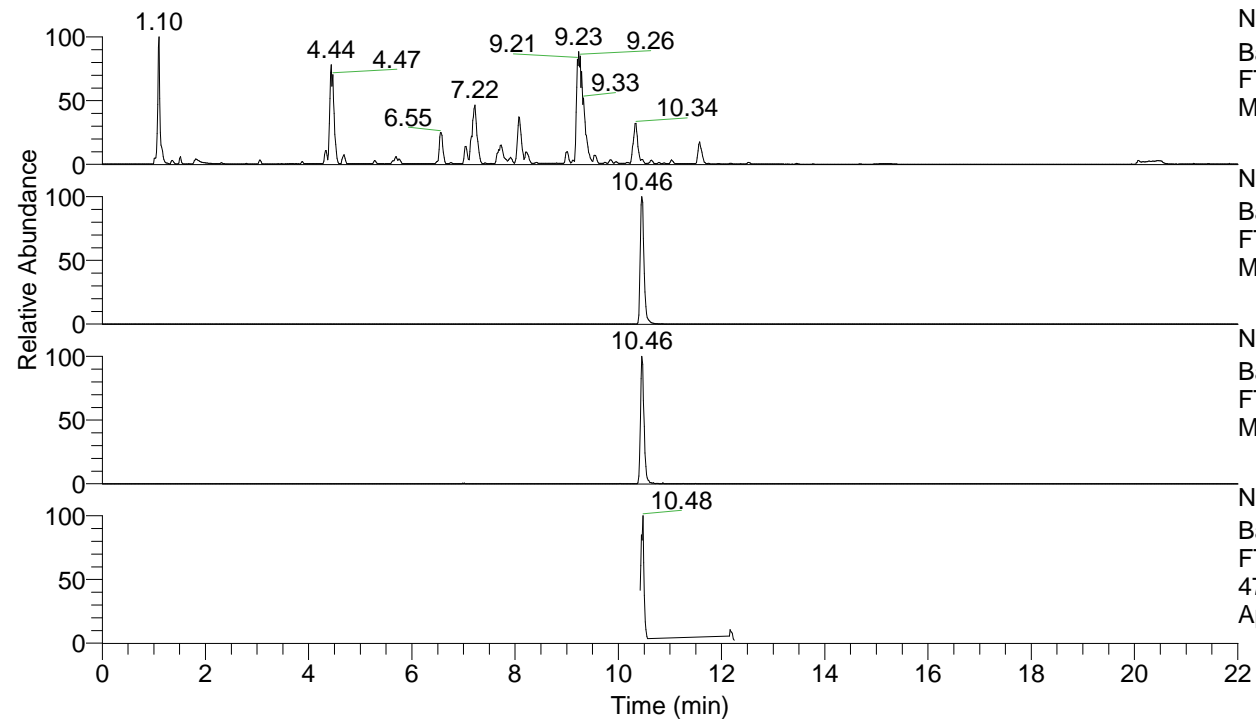


RT: 0.00 - 22.00



NL: 1.25E8
 Base Peak m/z= 100.00000-1500.00000 F:
 FTMS + p ESI Full ms [100.00-1500.00]
 MS Apotteri

NL: 4.96E6
 Base Peak m/z= 475.37367-475.37843 F:
 FTMS + p ESI Full ms [100.00-1500.00]
 MS Apotteri

NL: 5.27E5
 Base Peak m/z= 238.19075-238.19313 F:
 FTMS + p ESI Full ms [100.00-1500.00]
 MS Apotteri

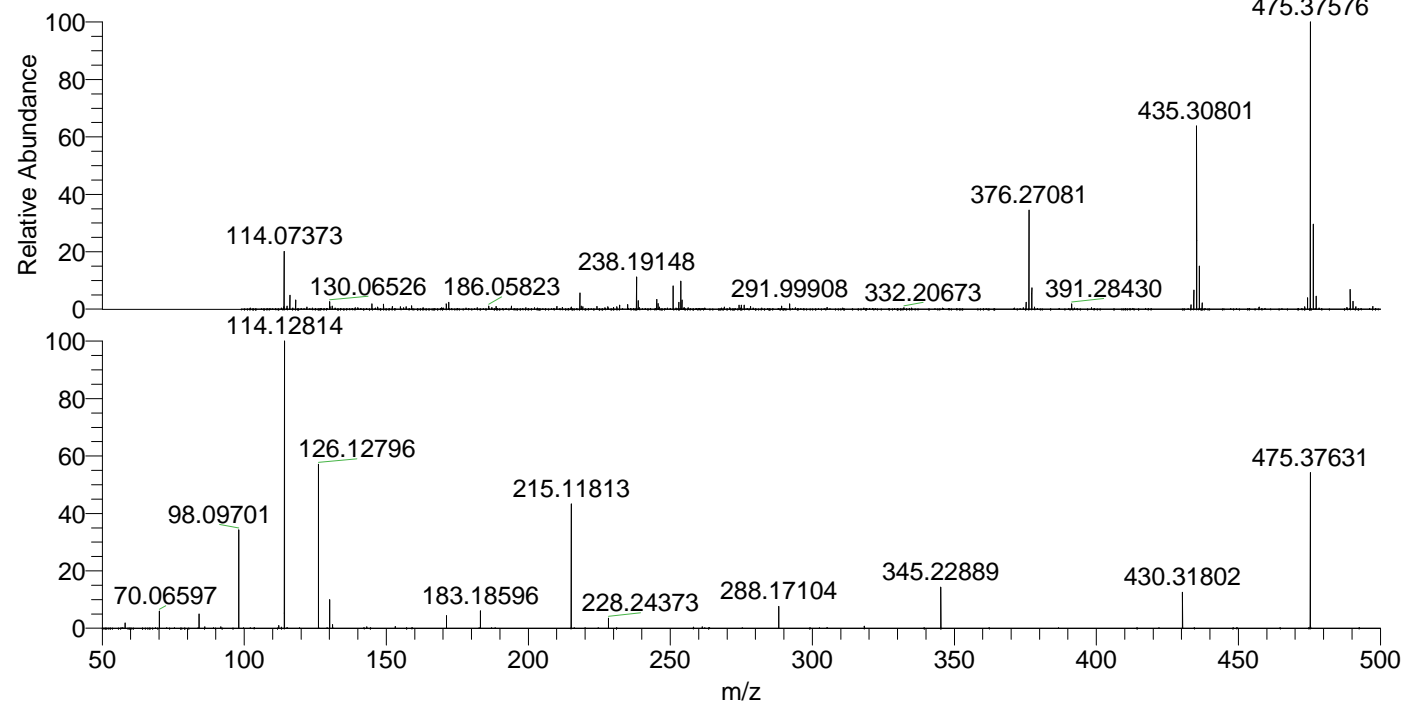
NL: 8.06E5
 Base Peak m/z= 50.00000-1500.00000 F:
 FTMS + p ESI d Full ms2
 475.34@hcd35.00 [50.00-505.00] MS
 Apotteri

Apotteri#4193-4232 RT: 10.42-10.52

F: FTMS + p ESI d Full ms2 475.34 ...

m/z= 50.00000-1000.00000

m/z	Intensity	Relative
58.06607	8154.0	1.75
70.06597	26766.9	5.75
84.08142	22746.0	4.89
86.09702	2411.5	0.52
98.09701	163365.0	35.10
112.11260	4318.6	0.93
114.09195	4921.0	1.06
114.12814	465373.8	100.00
126.12796	264630.1	56.86
130.06530	46761.3	10.05
131.11825	5861.3	1.26
153.13912	2907.8	0.62
171.18575	21036.7	4.52
183.18597	29148.1	6.26
215.11811	204534.2	43.95
228.24373	15657.0	3.36
261.26616	2444.8	0.53
288.17105	35234.5	7.57
318.32373	3207.8	0.69
345.22889	66562.8	14.30
430.31779	60031.3	12.90
475.37631	252862.6	54.34



NL: 4.69E6
 Apotteri#4207 RT: 10.46
 AV: 1 T: FTMS + p ESI
 Full ms [100.00-1500.00]

NL: 5.12E5
 Apotteri#4192-4226 RT:
 10.42-10.51 AV: 7 F:
 FTMS + p ESI d Full ms2
 475.34@hcd35.00
 [50.00-505.00]