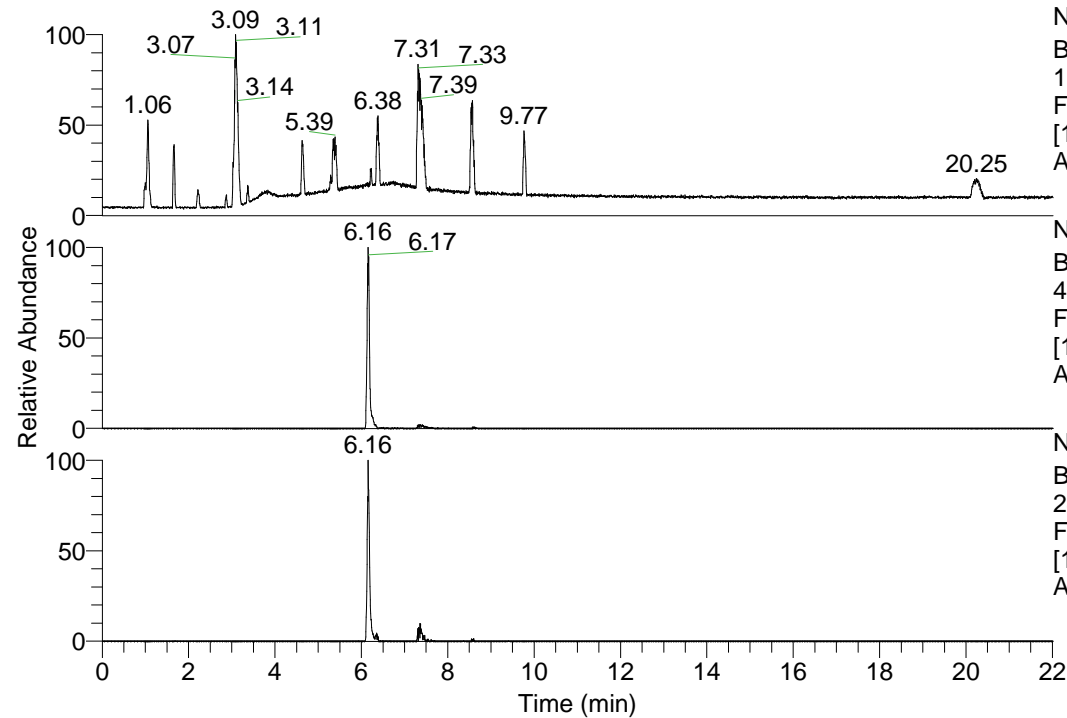


RT: 0.00 - 22.01



NL: 1.69E8
 Base Peak m/z=
 100.00000-1500.00000 F:
 FTMS + p ESI Full ms
 [100.00-1500.00] MS
 Apotteri_HDX

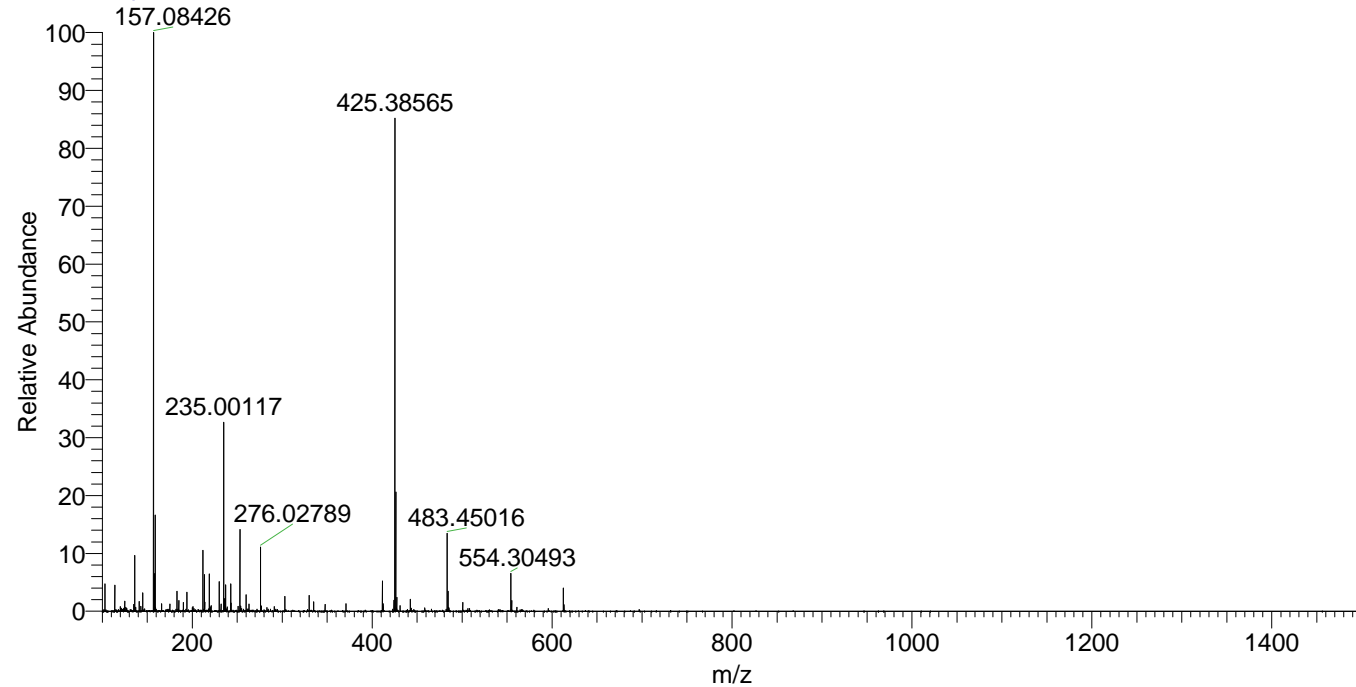
NL: 4.04E6
 Base Peak m/z=
 483.44611-483.45095 F:
 FTMS + p ESI Full ms
 [100.00-1500.00] MS
 Apotteri_HDX

NL: 1.42E6
 Base Peak m/z=
 242.73010-242.73252 F:
 FTMS + p ESI Full ms
 [100.00-1500.00] MS
 Apotteri_HDX

Apotteri_HDX#980 RT: 6.16
 T: FTMS + p ESI Full ms [100.00-1500.00]
 m/z= 483.00000-484.00000

m/z	Intensity	Relative	Delta (ppm)	Composition
483.45016	4039938.8	100.00	1.32	C ₂₆ H ₄₁ ² H ₈ ON ₇
			-1.88	C ₂₆ H ₄₃ ² H ₇ ON ₇
			4.53	C ₂₆ H ₃₉ ² H ₉ ON ₇

Apotteri_HDX #980 RT: 6.16 AV: 1 NL: 2.92E7
 T: FTMS + p ESI Full ms [100.00-1500.00]



Apotteri_HDX #980 RT: 6.16 AV: 1 NL: 3.93E6
 T: FTMS + p ESI Full ms [100.00-1500.00]

